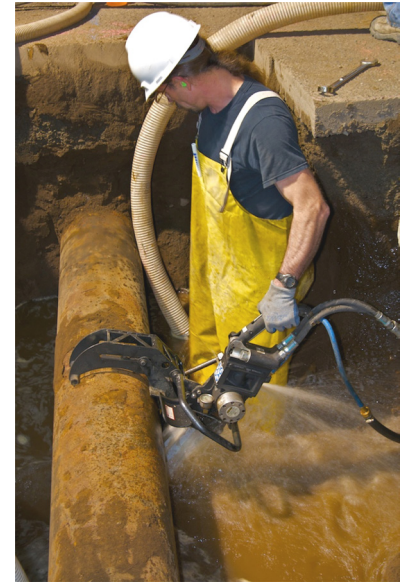
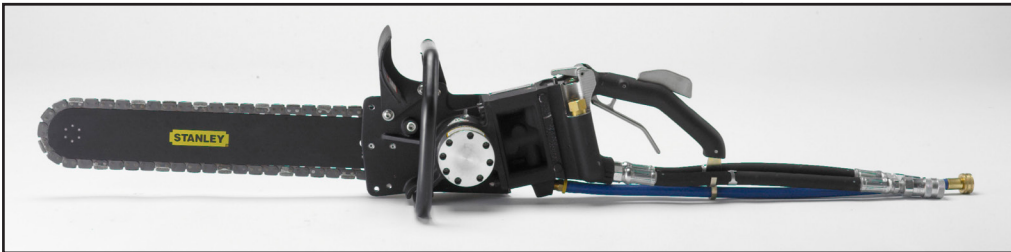


DS12 UTILITY CHAIN SAW

June 2016

Stanley Hydraulic Tools Chain Saw for cutting ductile iron pipe and more.

Stanley's utility chain saw is a revolutionary cutting method designed to change the way the job gets done. From ductile iron to plastic pipe, this chain saw will get you in and out of the job faster, easier and safer than other methods. Utilizing a brazed layer diamond coating on a durable chain chassis, this technology provides improved access with far less excavation in a confined space such as cutting water main pipe in a ditch.



Not just another way to cut pipe, but a new way to do the job.

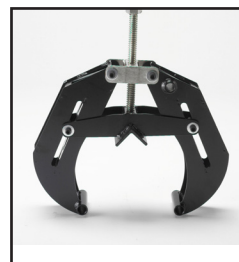
FEATURES AND BENEFITS:

- Cuts through 12" ductile iron pipe in under 4 minutes
- Cuts free hand or with pipe clamp
- 12" cut capacity when using pipe clamp with 18" bar
- Any size pipe can be cut free hand
- Wet cut system - requires a minimum 2 gpm of water flow at 20 psi
- Compatible with HTMA Type II Hydraulic Systems
- Improved operator safety
- Reduced excavation
- Reduced labor time
- Reduced operator effort
- Easy control while cutting
- Single side access
- Quiet and exhaust free hydraulic power
- Reduces rotational inertia associated with abrasive blade cut-off saws
- Operates in wet environment, i.e. flooded ditch



Utility Chain Saw Cuts

- Ductile iron pipe
- Insituform pipe lining
- PVC pipe
- Cast iron pipe
- HDPE pipe



Pipe Clamp Accessory (Sold Separately)

The pipe clamp accessory brings a whole new level of safety, accuracy and ease of use to the job site. Mount the clamp to the pipe and install the saw to the clamp. This rigid structure reduces the effort of handling the saw, while providing a solid, stable cutting platform that also improves operator safety and precision of the cut. The pipe clamp fits 4" to 12" diameter pipe.

DS12 UTILITY CHAIN SAW

June 2016

SPECIFICATIONS

ITEM	USA	METRIC
CAPACITY	18 inch Bar	45 cm Bar
HYDRAULIC FLOW RANGE	7 - 9 gpm	26 - 34 lpm
WORKING PRESSURE	1000 - 2000 psi	70 - 140 bar
FULL RELIEF SETTING	2250 psi	155 bar
PORTS	-8 SAE O-Ring	
WEIGHT (with 18" bar, chain and couplers)	26 lbs	11.8 kg
LENGTH (with bar and chain)	35 or 38 inch	89 or 97 cm
WIDTH	9 inch	23 cm
CONNECTION	3/8 inch Flush Face Quick Disconnect Couplers	
HOSE WHIPS	Yes	
LUBRICATING / COOLING	Internal Water Channels in Bar	
MINIMUM WATER REQUIREMENT	1 gpm of Water Flow at 20 psi	

ORDERING INFORMATION

PART NUMBER	DESCRIPTION
DS12318	Chain Saw, 8 gpm with 18" Utility Bar and HTMA Couplers
DS1231801	Chain Saw, CE, 8 gpm with 18" Utility Bar and Chain with HTMA Couplers
ACCESSORIES	DESCRIPTION
71048	18" Utility Chain
71047	18" Bar for Utility Chain
71055	Pipe Clamp Assembly
71046	Drive Sprocket
DCP30100	Water Pump, 12 VDC, DC Plug, Marine Type
DCP30101	Water Pump, 12 VDC, Battery Clips
60859	Water Flow Meter, 0 - 7 gpm
23517	Sprocket Wrench

WARRANTY

Stanley Hydraulic Tools and their associated parts are warranted against defects in materials and workmanship for a period of twelve months from the date of purchase. Stanley Hydraulic Tools reserves the right to repair or replace only those parts which prove to have been defective at the time of purchase. This warranty becomes void if maximum flow and pressure ratings are exceeded.

All Stanley Hydraulic Tools, parts, accessories and allied equipment are subject to design improvements, specifications and price changes at any time without notice and with no obligation to units already sold. Weights, dimensions and operating specifications listed herein are subject to change without notice. Where specifications are critical to your applications, please consult Stanley Hydraulic Tools.