



[www.LaBountyAttachments.com](http://www.LaBountyAttachments.com)



# MSD 7R

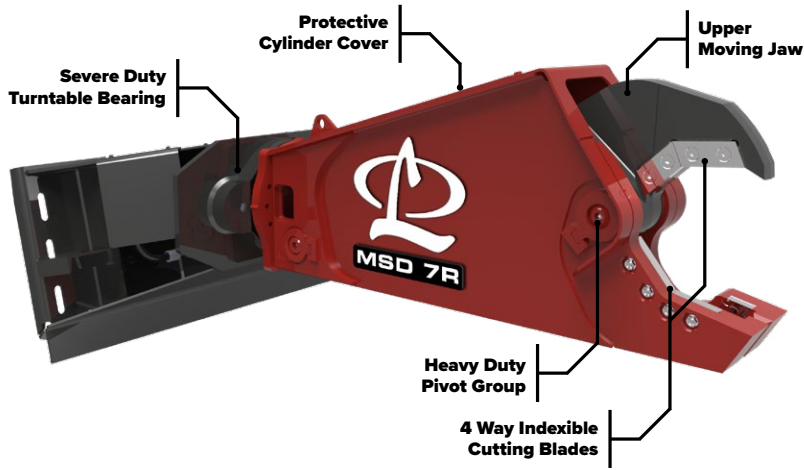
## MOBILE SHEARS

LaBounty® MSD 7R Mobile Shears are ideal for cutting ferrous scrap, nonferrous scrap and concrete in both scrap processing facilities and demolition sites where maneuvering in tight areas is required. Ideally suited to both mini-excavators and skid steer loaders, this tool has proven itself to be extremely versatile.

The MSD 7R features 4 way indexible, bolt-on cutting blades, maximizing your wear part investment and making it easy to maintain. A large bore, heavy duty cylinder is designed specifically for this product to insure maximum cutting force and longevity. A 360°, continuous rotation, heavy duty bearing and motor allow precise placement of the jaws at any angle.

Built to Last - The upper and lower jaws are made from durable, high strength castings while the body is made from high strength plate steel. The hydraulic cylinder is designed for heavy, continuous duty. The rotation bearing and motor are designed to withstand the full force of the machine's boom and arm.

# MSD 7R MOBILE SHEARS



## ACCESSORIES AND WEAR PARTS

- 4 WAY INDEXIBLE CUTTING BLADES
- WELD-IN REPLACEABLE PIERCING TIP
- SHEAR INSTALLED SELECTOR VALVE TO SUPPLY OIL FOR ROTATION (ELIMINATES NEED FOR 2ND ADDITIONAL CIRCUIT)
- MINI EXCAVATOR / SKID STEER ADAPTER BRACKET



## SPECIFICATION TABLE

Model	Weight*		Jaw Opening		Jaw Depth		Reach**		Min Excavator Weight - 2nd Member***		Min Excavator Weight - 3rd Member***	
	lbs	kg	in	mm	in	mm	ft	m	lbs	mTons	lbs	mTons
MSD 7R	1,200	500	11	280	10	250	6.0	1.8	7,000	3	18,000	8

\*Weight includes standard excavator mounting bracket. Attachment weight may vary depending on mounting configuration as well as options.

\*\* Reach is measured from the attachment mounting pivot (boom or stick) forward to the end of the jaw.

\*\*\* Excavator weight range is a guide only. 2nd member configurations at or near min/max excavator weight and all 3rd member configurations must be preapproved by LaBounty. Quick couplers, short swing machines, long arms all impact carrier size recommendation.

LaBounty reserves the right to improve, update, or change the product specifications, appearance, or functional attributes without notice.

## APPETITE GUIDE

The appetite data in the chart below are typical. Please call Stanley LaBounty for any other appetite or application questions.

I-Beam		Plate		Solid Round		Pipe		Concrete	
in	mm	in	mm	in	mm	in	mm	in	mm
7	178	.25	7	1.25	32	5	127	8	203

## HYDRAULIC REQUIREMENTS

STANLEY LaBounty offers two cylinder sizes to optimize the performance of the MSD 7R Mobile Shear. Recommended Pressure and flow ranges are as follows:

Function	Pressure	Flow
OPEN & CLOSE	3600-4350 PSI (248-300 Bar)	17-25 GPM (64-95 LPM)
	3000-3600 PSI (207-248 Bar)	17-35 GPM (64-132 LPM)
ROTATION	1350-200 PSI (92-138 Bar)	3-5 GPM (11-19 LPM)

For Skid Steer mounting, typically the rear auxiliary hydraulic circuit is used to operate the open and close function of the jaws (Full base machine pressure and flow). An optional selector valve can be ordered from LaBounty to supply oil to the shear's rotator (lower flow, lower more pressure). For mini-excavator mounting or rubber-tire backhoe loaders, please consult LaBounty for proper hydraulic recommendations.

# LABOUNTY

1538 Hwy 2 // Two Harbors, MN 55616 // 833-723-1843 // [www.LaBountyAttachments.com](http://www.LaBountyAttachments.com)