

STANLEY®

Stanley MB/XP3025

HYDRAULIC BREAKER Parts Manual



Contents

Housing Unit.....	4
Accumulator.....	6
Main Valve.....	7
Restrictor Valve.....	8
Pressure Control Valve.....	10
Tie Rods.....	12
Body Parts.....	13
Front Head.....	15
Lower Tool Bushing.....	16
Tool.....	17
Seal Set.....	18
Service Kit.....	20
Service Kit 2A.....	21
Manual Greasing.....	22
Greasing Device Kit.....	23
Greasing Device.....	25

GENUINE STANLEY SPARE PARTS

Stanley Genuine spare parts are designed and manufactured by using the latest technological knowledge and engineering skills. Stanley spare parts are made of the best available materials with the most advanced manufacturing techniques.

It is important that you use only genuine Stanley spare parts, to ensure easy operation maintenance and repair of the product. Please note that eventual warranty claims will be handled only if you have used genuine Stanley parts in your Stanley product.

LOCATION OF THE SERIAL NUMBER

It's important to make correct reference to the serial number of the product when ordering spare parts. Identification of serial number is the only proper means of maintaining and identifying parts for a specific product. The location of equipment serial number is pointed in "Operation and Maintenance" manual.

SPARE PART ORDERS

Quick spare part deliveries are secured by exact orders.

Required Information:

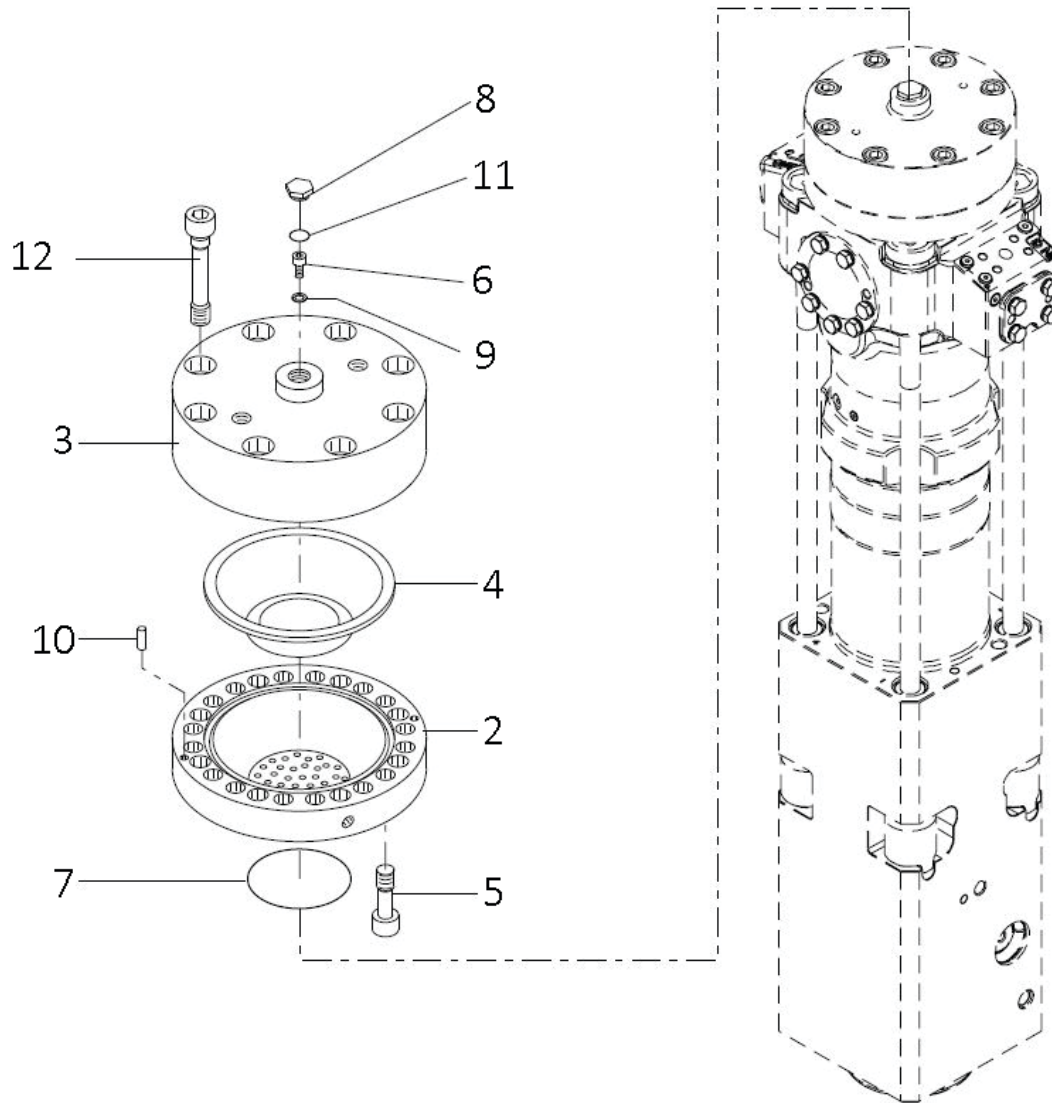
- Name of customer and contact person
- Order number (when available)
- Delivery address
- Mode of delivery (air mail etc.)
- Required delivery date
- Invoicing address
- Model and serial number of the product
- Name, number and required amount of spare parts

PARTS

HOUSING UNIT

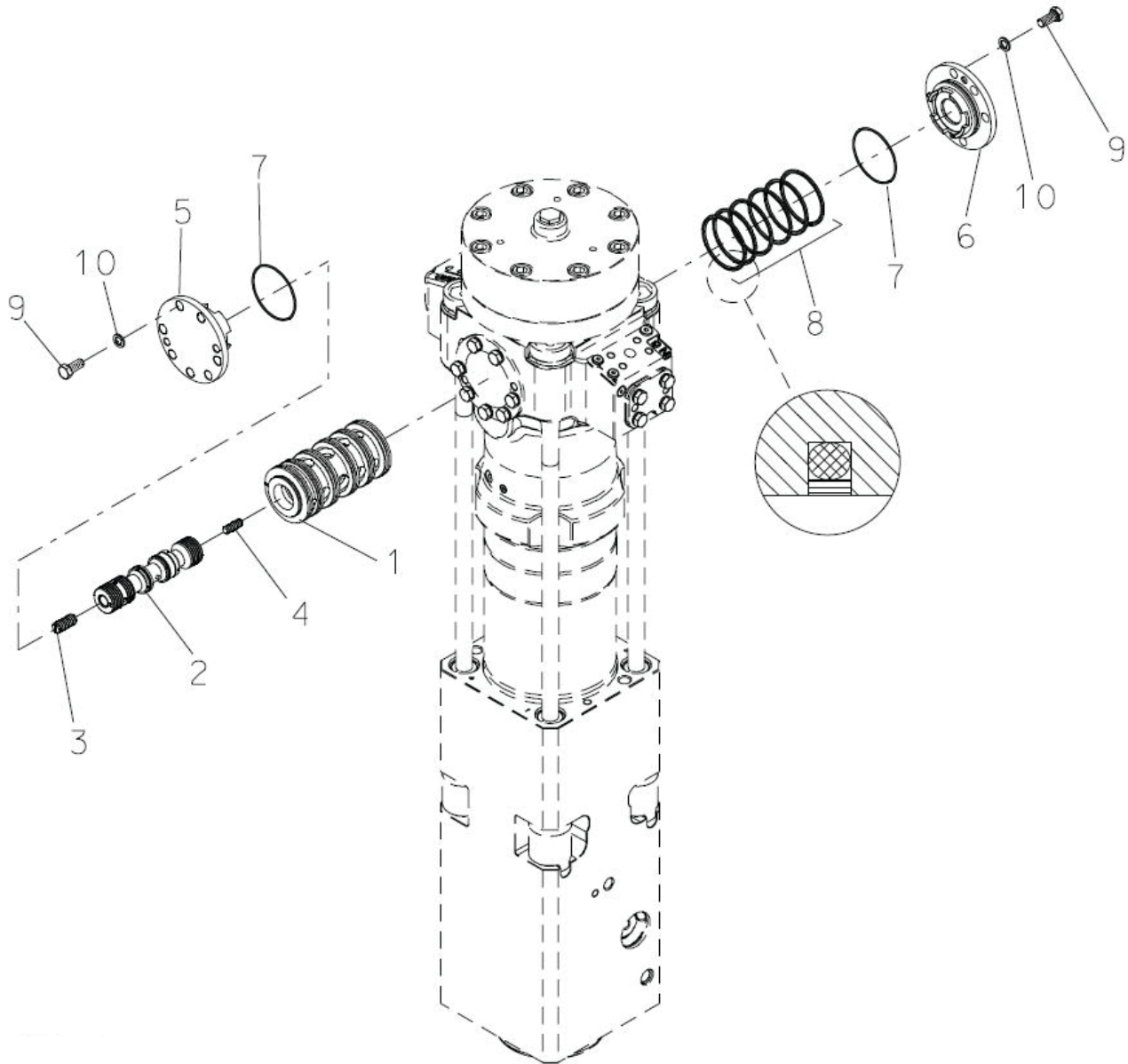
Item	Description	Part no.	Specification	Note	Qty
1	Housing	80628			1
2	Pad	78603			2
3	Buffer	77770			1
4	Rubber plug	78604	D50		2
7	Hex. screw	76905	M24x110-12.9 ISO 4014		14
8	Washer	76906	25 ISO 7416		14
9	Lock nut	76907	M24-12 DIN 985		14
10	Plug	77716			4
102	Rubber plug	78609			2
103	Seal	78610			1
104	Wear plate	78611			4
105	Lifting eye	78610	M30 DIN 580		1
106	Hex. screw	78613	M30x40-8.8 ISO 4017		1
107	Shield plate	77773			2
120	Wear plates	78608			1
20	Label set	80634			1

ACCUMULATOR



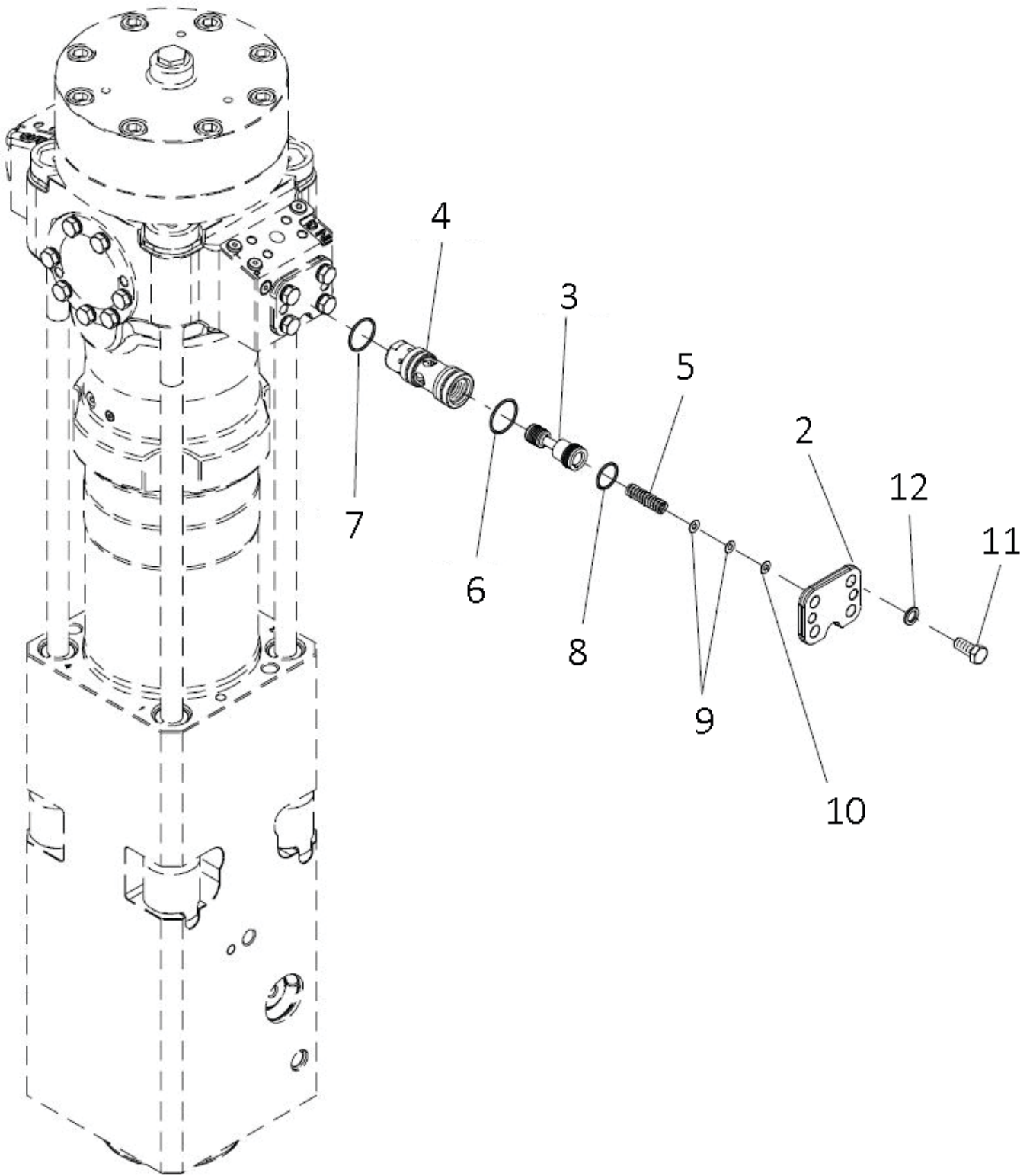
Item	Description	Part no.	Specification	Note	Qty
1	Accumulator (incl. parts 2-11)	78615			1
2	Accumulator bottom	78616			1
3	Accumulator cover	78617			1
4	Membrane	77779			1
5	Accumulator screw	77780			16
6	Filling plug	76921			1
7	Seal	76924	D114		1
8	Shield plug	76922			1
9	Usit-ring	76846	8-13.9-1	*	1
10	Parallel pin	77781	10m6x24 DIN 6325		2
11	O-ring	76844	D23	*	1
12	Accumulator screw	78618			8
	(*) included in seal set				

MAIN VALVE



Item	Description	Part no.	Specification	Note	Qty
1	Main valve bushing	78619			1
2	Main spool	78620			1
3	Spool	78621			1
4	Spool	77786			1
5	Cover	78622			1
6	Cover	78623			1
7	O-ring	77789	D105	*	2
8	Seal	77790	D110	*	6
9	Hex. screw	76933	M16x35-8.8 ISO 4017		13
10	Lock washer	76852	M16 NORD-LOCK		13
	(*) included in seal set				

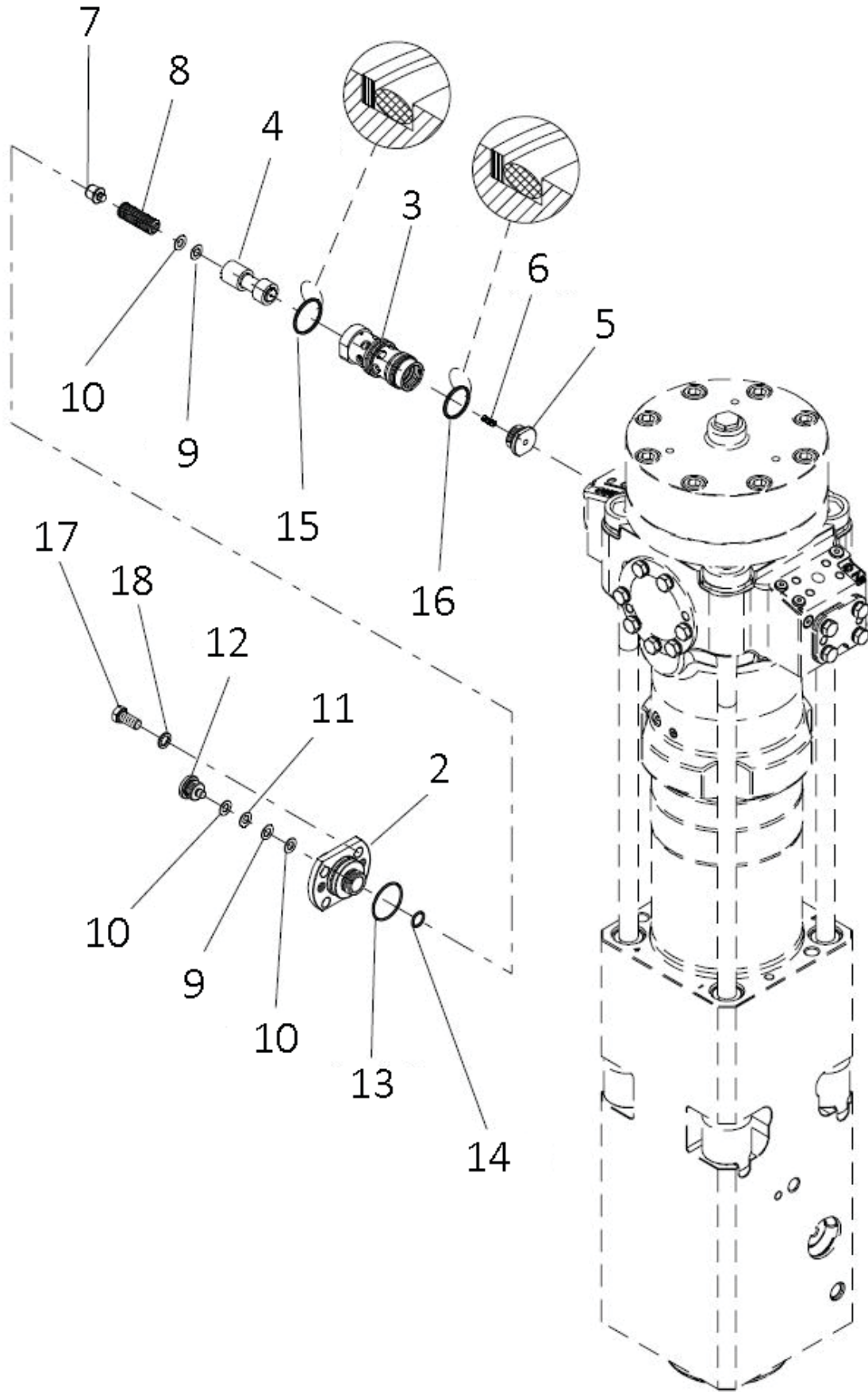
RESTRICTOR VALVE



RESTRICTOR VALVE

Item	Description	Part no.	Specification	Note	Qty
1	Restrictor valve (incl. parts 2-10)	78624			1
2	Cover	76935			1
3	Spool	77793			1
4	Valve housing	78625			1
5	Spring	76938			1
6	O-ring	76939	D46	*	1
7	O-ring	76940	D44	*	1
8	O-ring	76941	D34	*	1
9	Shim plate	76861	S=0.5		2
10	Shim plate	76860	S=1		1
11	Hex. screw	76933	M16x35-8.8 ISO 4017		4
12	Lock washer	76852	M16 NORD-LOCK		4
	(*) included in seal set				

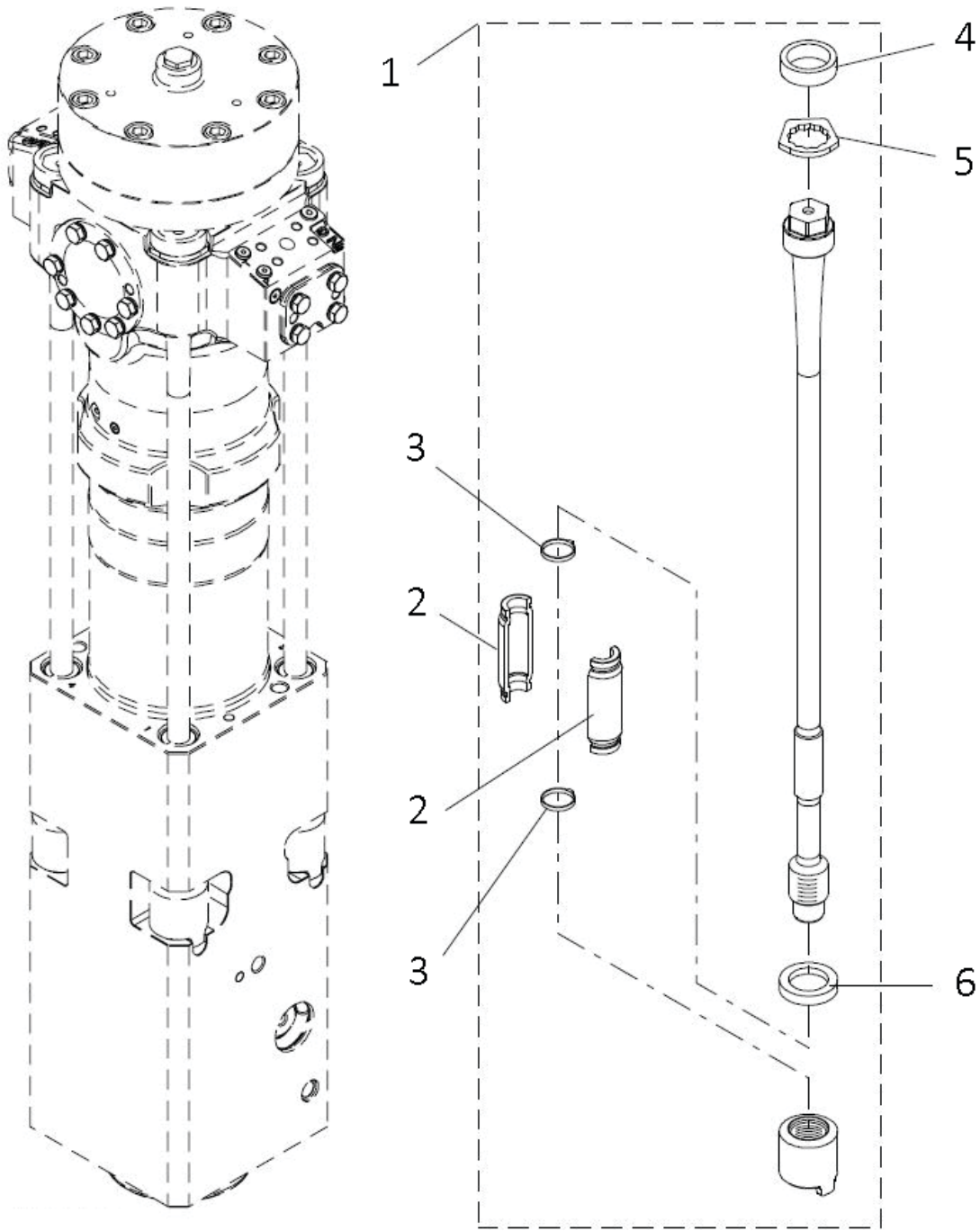
PRESSURE CONTROL VALVE



PRESSURE CONTROL VALVE

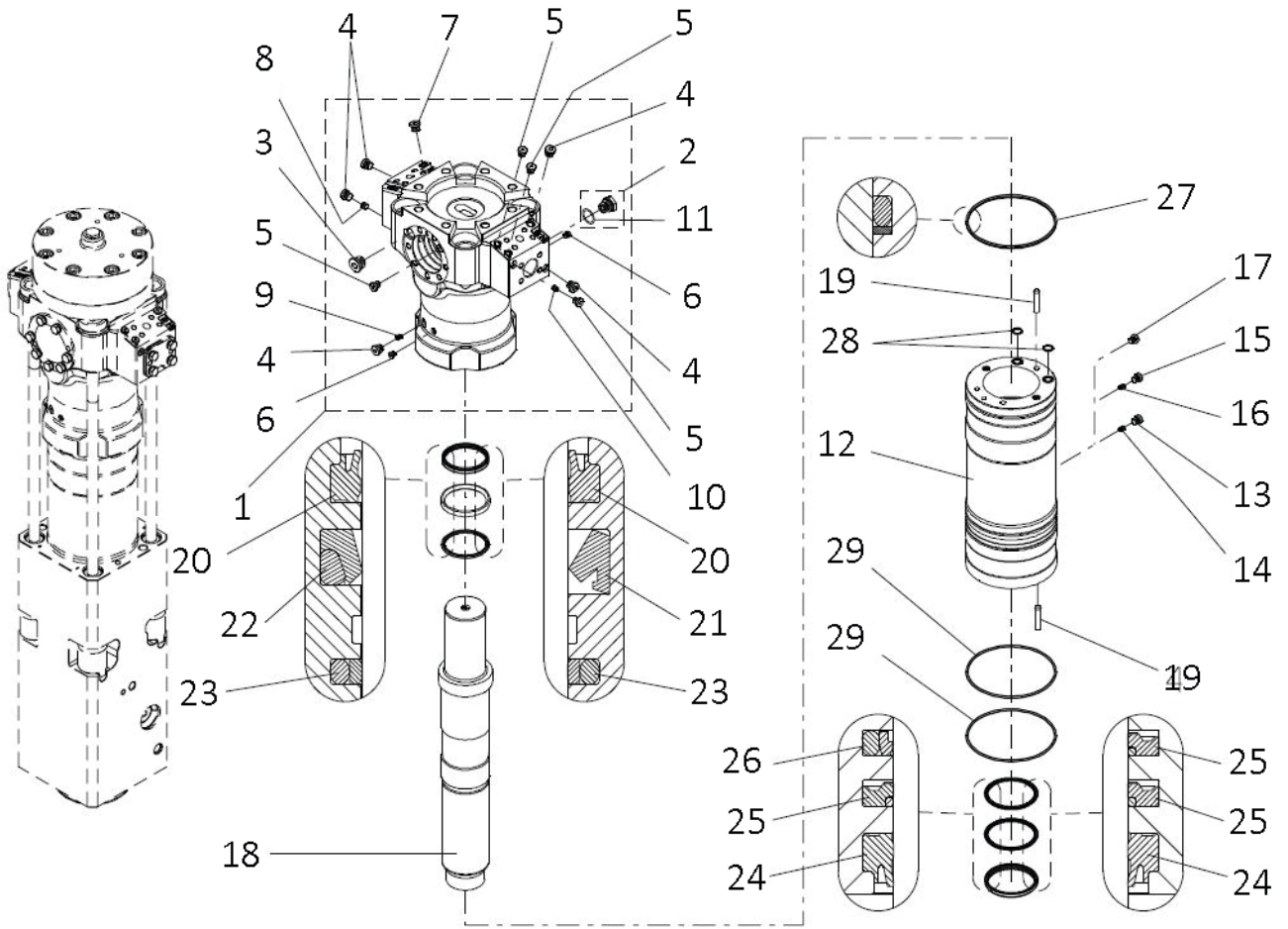
Item	Description	Part no.	Specification	Note	Qty
1	Pressure control valve (incl parts 2-16)	78626			1
2	Cover	77796			1
3	Valve housing	77797			1
4	Spool	78627			1
5	Guide	77799			1
6	Spool	78062			1
7	Spring guide	78063			1
8	Spring	76950			1
9	Shim plate	76951	S=0.5		x
10	Shim plate	76952	S=1		x
11	Shim plate	76953	S=0.75		x
12	Plug	78064			1
13	O-ring	78628	D60	*	1
14	O-ring	78066	D21	*	1
15	Seal	78067	D55	*	1
16	Seal	78068	D50	*	1
17	Hex. screw	76933	M16x35-8.8 ISO 4017		4
18	Lock washer	76852	M16 NORD-LOCK		4
	(*) included in seal set				

TIE RODS



Item	Description	Part no.	Specification	Note	Qty
1	Tie rod set (incl. parts 2-6)	78629			4
2	Vibration dampening element	78630			2
3	Cable tie	76962			2
4	Rubber ring	78631			1
5	Lock plate	78632			1
6	Spacer	78633			1

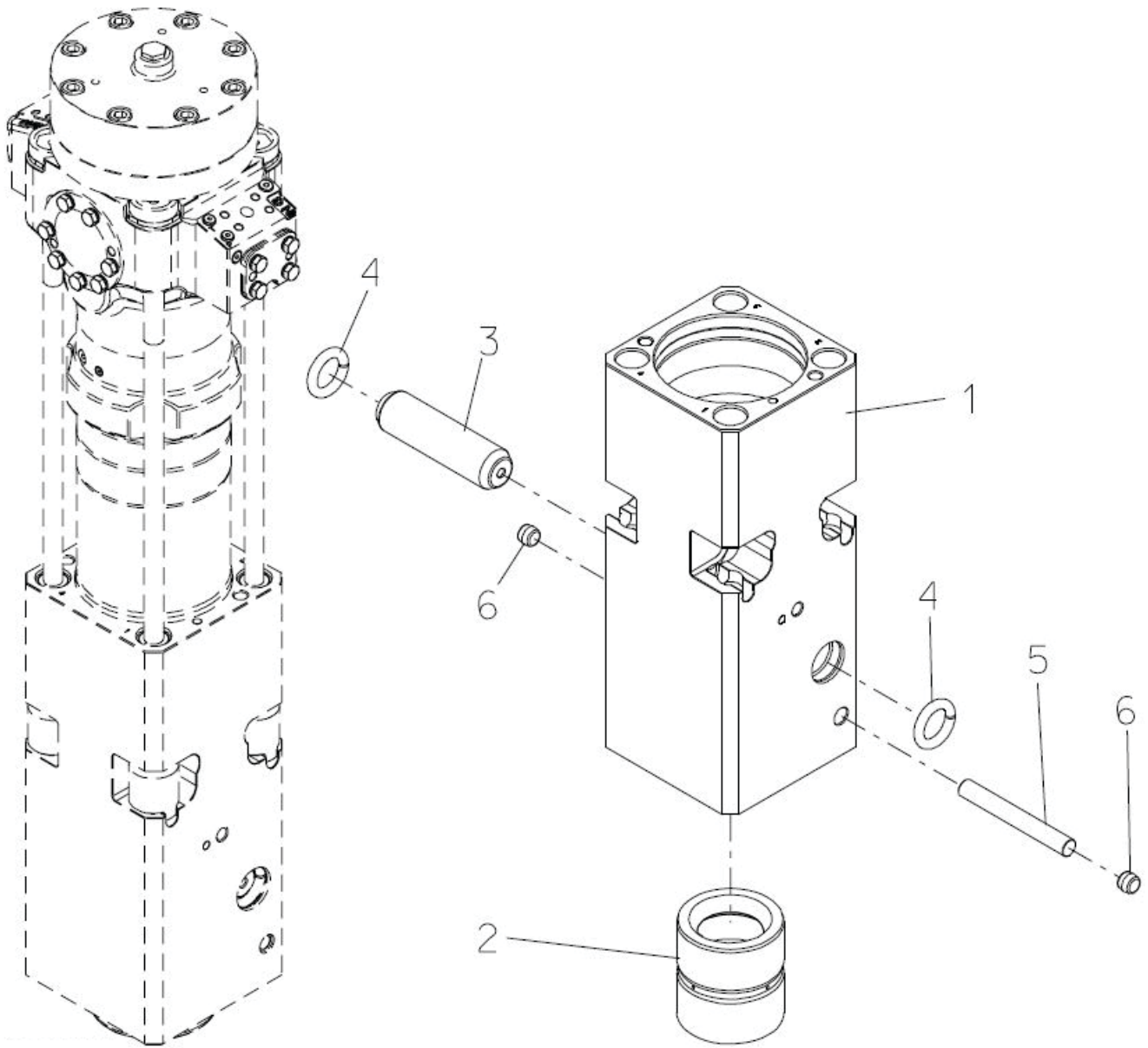
BODY PARTS



BODY PARTS

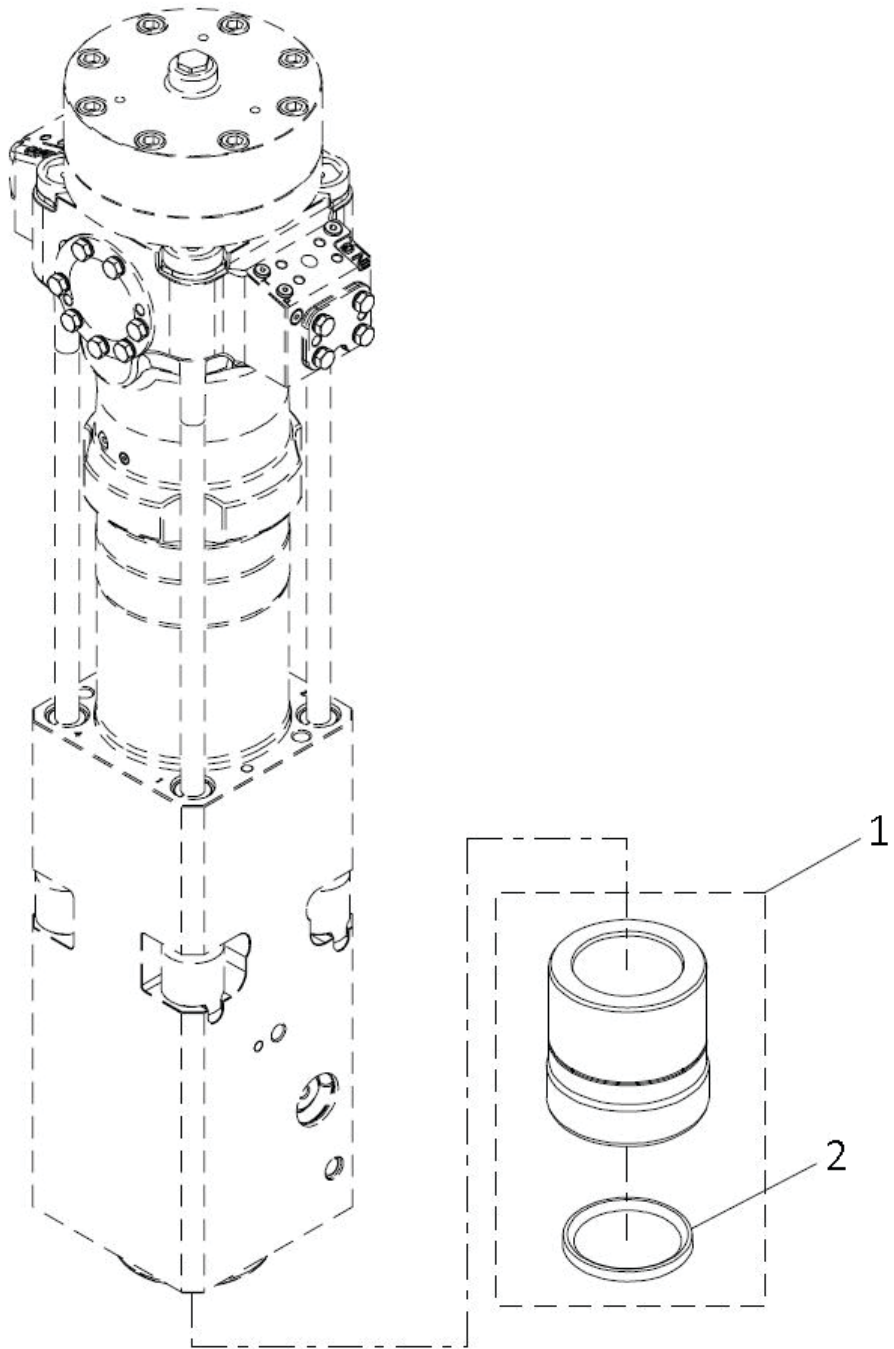
Item	Description	Part no.	Specification	Note	Qty
1	Valve body (incl parts. 2-10)	78634			1
2	Breather (incl part 11)	78075			1
3	Flange plug	76859	R3/4		1
4	Flange plug	76847	R3/8		5
5	Flange plug	76969	R1/4		4
6	Flange plug	76970	R1/8		2
7	Breather	76971	R3/8		1
8	Taper plug	78076	DIN 906-R1/4		1
9	Nozzle	76972			1
10	Nozzle	76973			1
11	O-ring	76968	D24	*	1
12	Cylinder (incl parts 13-17)	78635			1
13	Flange plug	76969	R1/4, softened stroke		1
14	Nozzle	78636	Softened stroke		1
15	Flange plug	76969	R1/4, normal stroke		1
16	Screw	76976	M10x12 ISO 4026, normal stroke		1
17	Flange plug	76969	R1/4, idle stroke prevention		1
18	Piston	78637			1
19	Parallel pin	78638	16m6x70 ISO 8734		2
20	Wiper	78639		*	1
21	Seal	78640		*	1
22	Seal	78641	Heat resistant	**	1
23	Seal	78642		*	1
24	Wiper	78643		*	1
25	Seal	78644		*	2
26	Seal	78645	Heat resistant	**	1
27	Seal	78646	D230	*	1
28	O-ring	78647	D21	*	2
29	O-ring	78648	D229	*	2
	(*) included in seal set				
	(**) included in heat resistant seal set				

FRONT HEAD



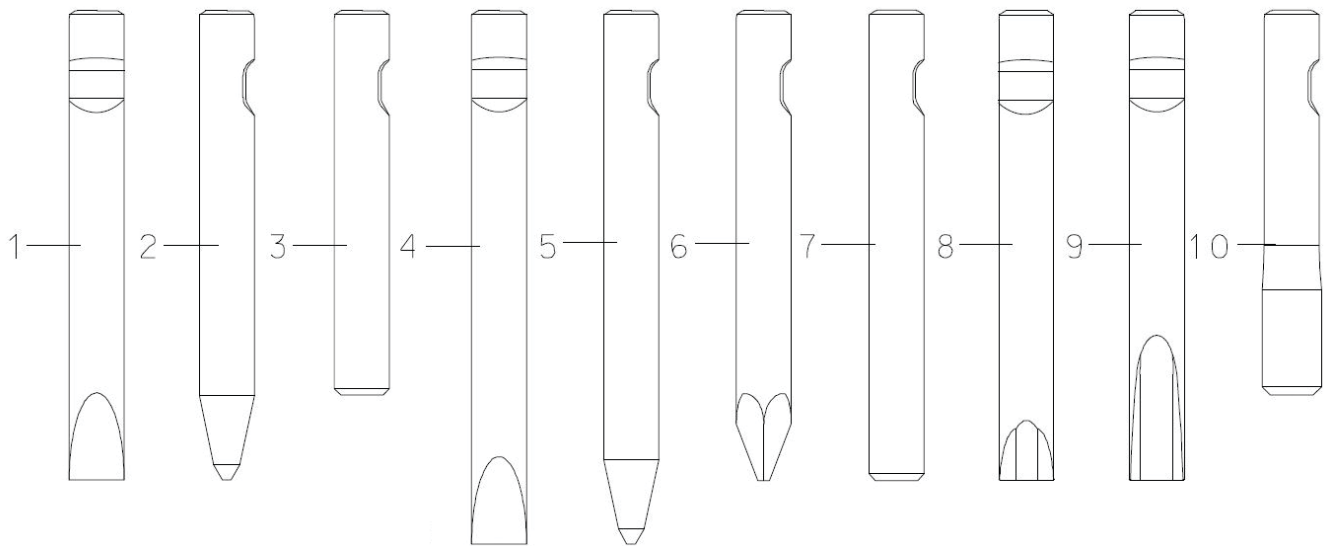
Item	Description	Part no.	Specification	Note	Qty
1	Front head	78649			1
2	Upper tool bushing	78650			1
3	Tool retaining pin	78651			1
4	Ring	78652			2
5	Retaining pin	78653			1
6	Rubber plug	78654			2
	(*) included in seal set				

LOWER TOOL BUSHING



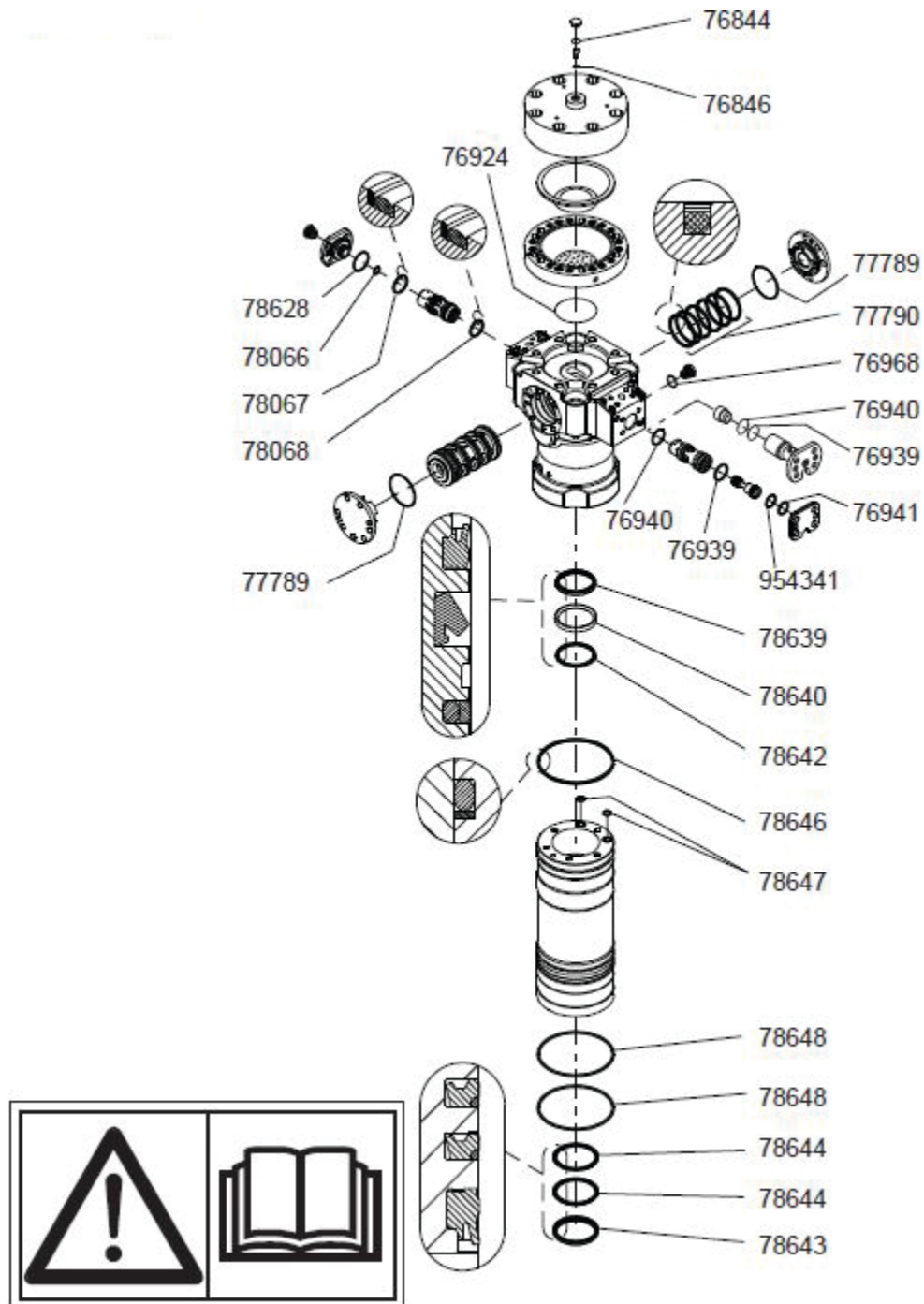
Item	Description	Part no.	Specification	Note	Qty
1	Lower tool bushing (incl. part 2)	78655			1
2	Seal	78656			1
	(*) included in seal set				

TOOL



Item	Description	Part no.	Specification	Note	Qty
1	Chisel	78657	L=1120 mm, W= 112 kg D= 135mm		1
2	Moil point	78658	L=1120 mm, W= 108 kg D= 135mm		1
3	Blunt	78659	L=920 mm, W= 100 kg D= 135mm		1
4	Long chisel	78660	L=1270 mm, W= 129 kg D= 135mm		1
5	Long moil point	78661	L=1270 mm, W= 129 kg D= 135mm		1
6	Pyramid	78662	L=1120 mm, W= 108 kg D= 135mm		1
7	Long blunt	78663	L=1120 mm, W= 121 kg D= 135mm		1
8	Limestone chisel	78665	L=1120 mm, W= 115 kg D= 135mm		1
9	Hard rock chisel	78664	L=1120 mm, W= 106 kg D= 135mm		1
10	Super blunt	78666	L=920 mm, W= 101 kg D= 143mm		1

SEAL SET

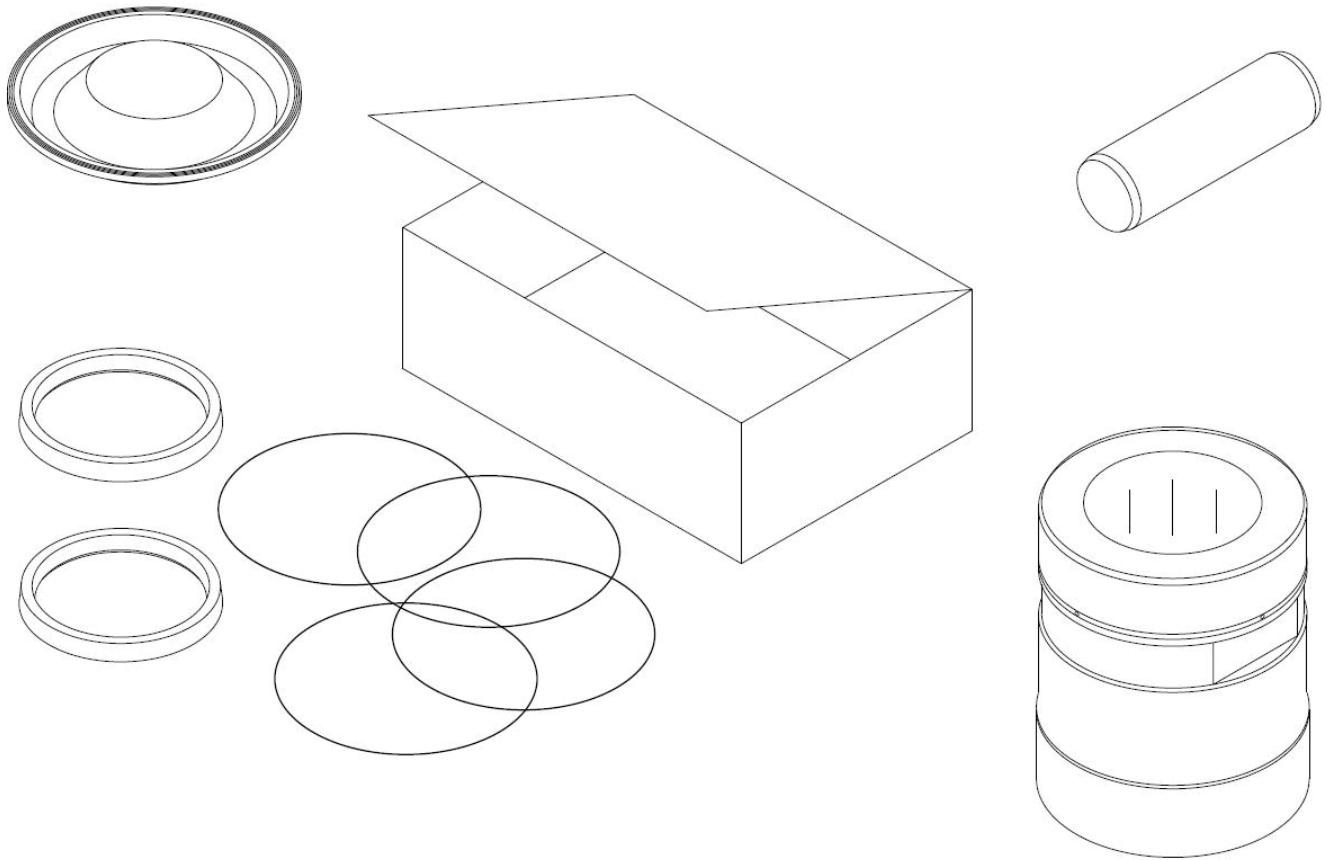


This summary only indicates the position of the seals. It must NOT be used as assembly instruction. Read the manual.

SEAL SET

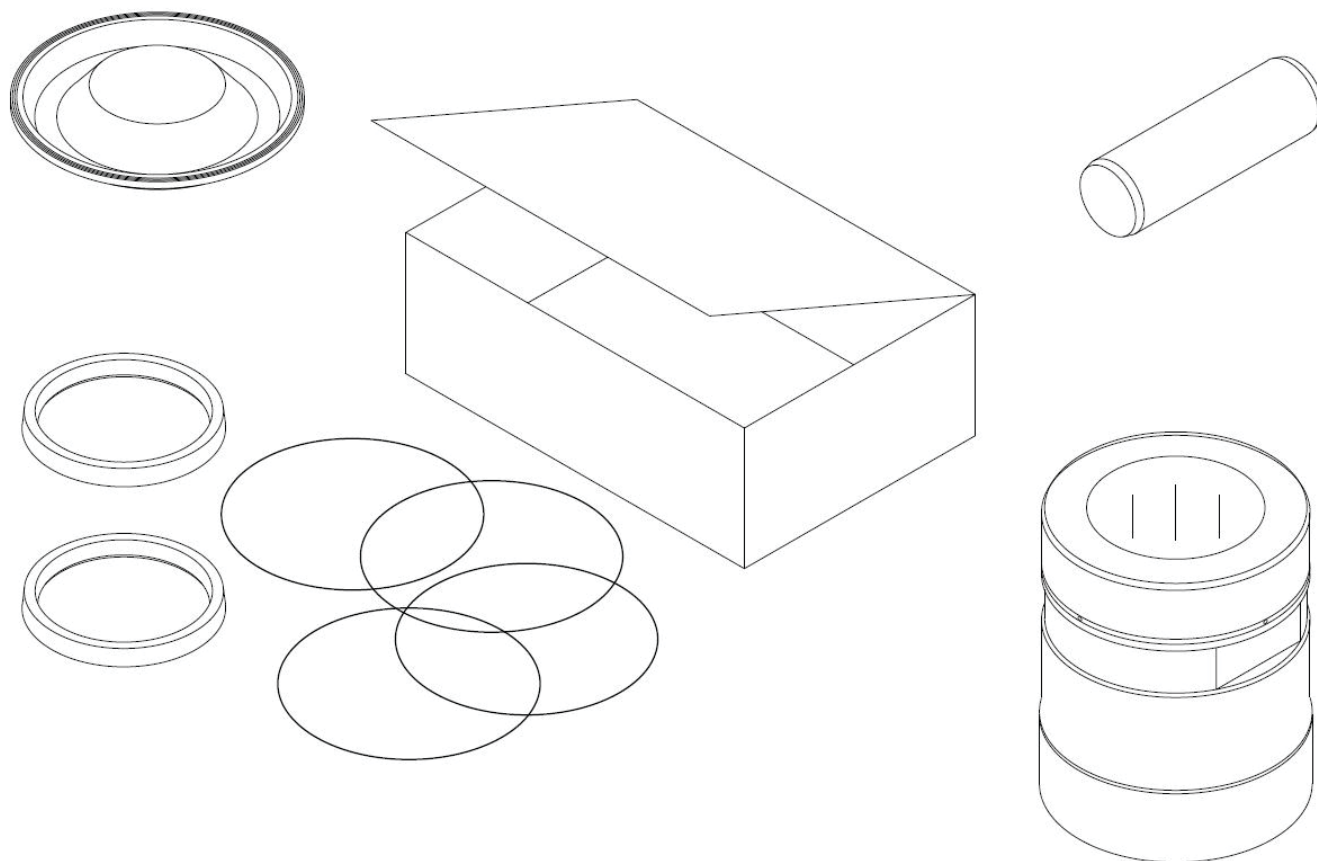
Item	Description	Part no.	Specification	Note	Qty
Kit	Seal set (inc. parts 1-22)	78667			1
1	Seal	76924	D114		1
2	O-ring	76844	D23		1
3	Usit-ring	76846	8-13.9-1		1
4	O-ring	77789	D105		2
5	Seal	77790	D110		6
6	O-ring	76939	D46		1
7	O-ring	76940	D44		1
8	O-ring	76941	D34		1
9	O-ring	78628	D60		1
10	O-ring	78066	D21		1
11	Seal	78067	D55		1
12	Seal	78068	D50		1
13	O-ring	76968	D24		1
14	Wiper	78639			1
15	Seal	78640			1
16	Seal	78642			1
17	Wiper	78643			1
18	Seal	78644			2
19	Seal	78646	D230		1
20	O-ring	78648	D229		2
21	O-ring	78647	D21		2
22	Seal	76942			1
	The seals for greasing device are not included in this seal set. They are included in the service kit of greasing device.				

SERVICE KIT



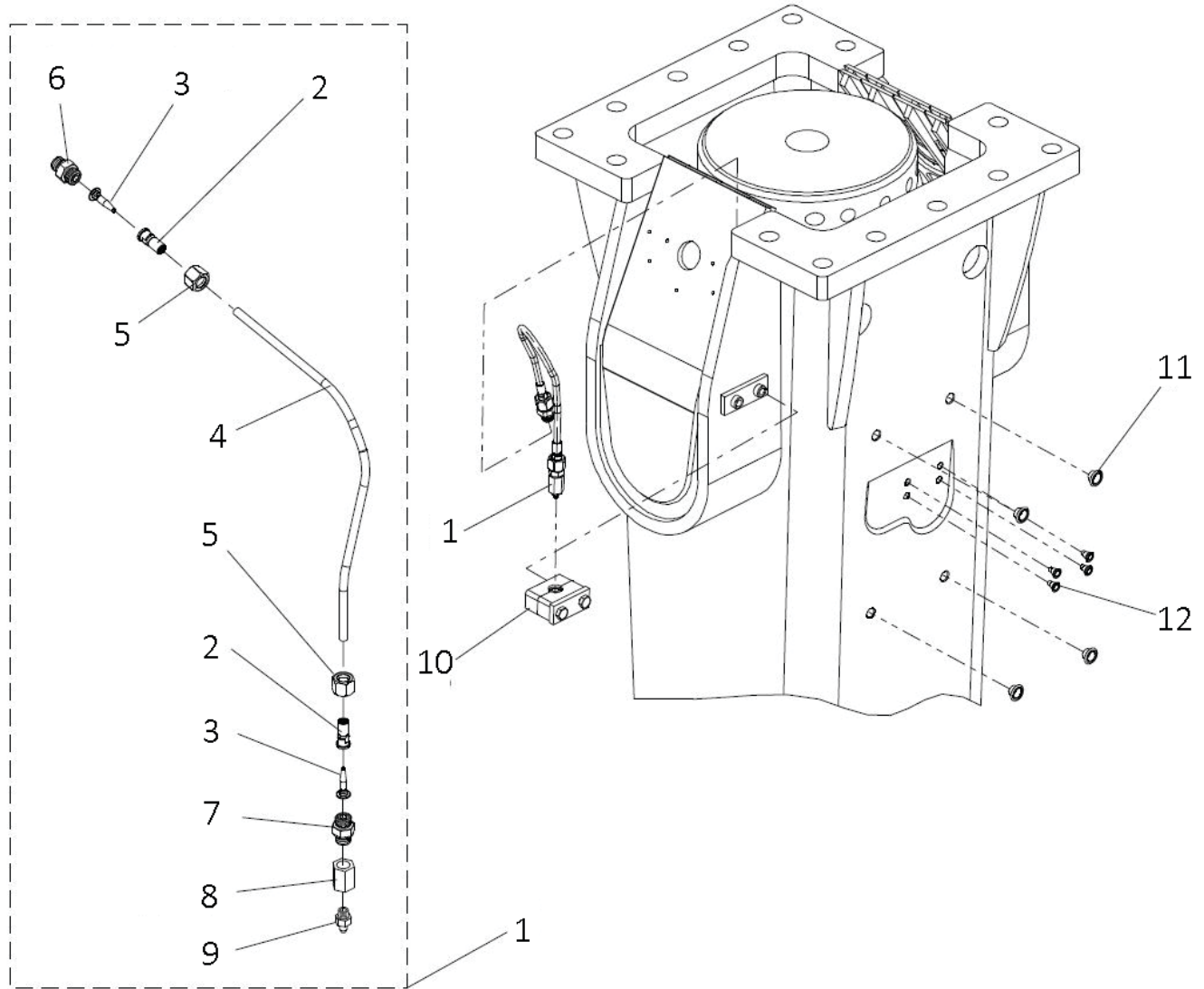
Item	Description	Part no.	Specification	Note	Qty
Kit	Service kit (incl. parts 1-4)	78668			1
1	Membrane	77779			1
2	Tool retaining pin	78651			1
3	Lower tool bushing	78655			1
4	Seal set	78667			1

SERVICE KIT 2A



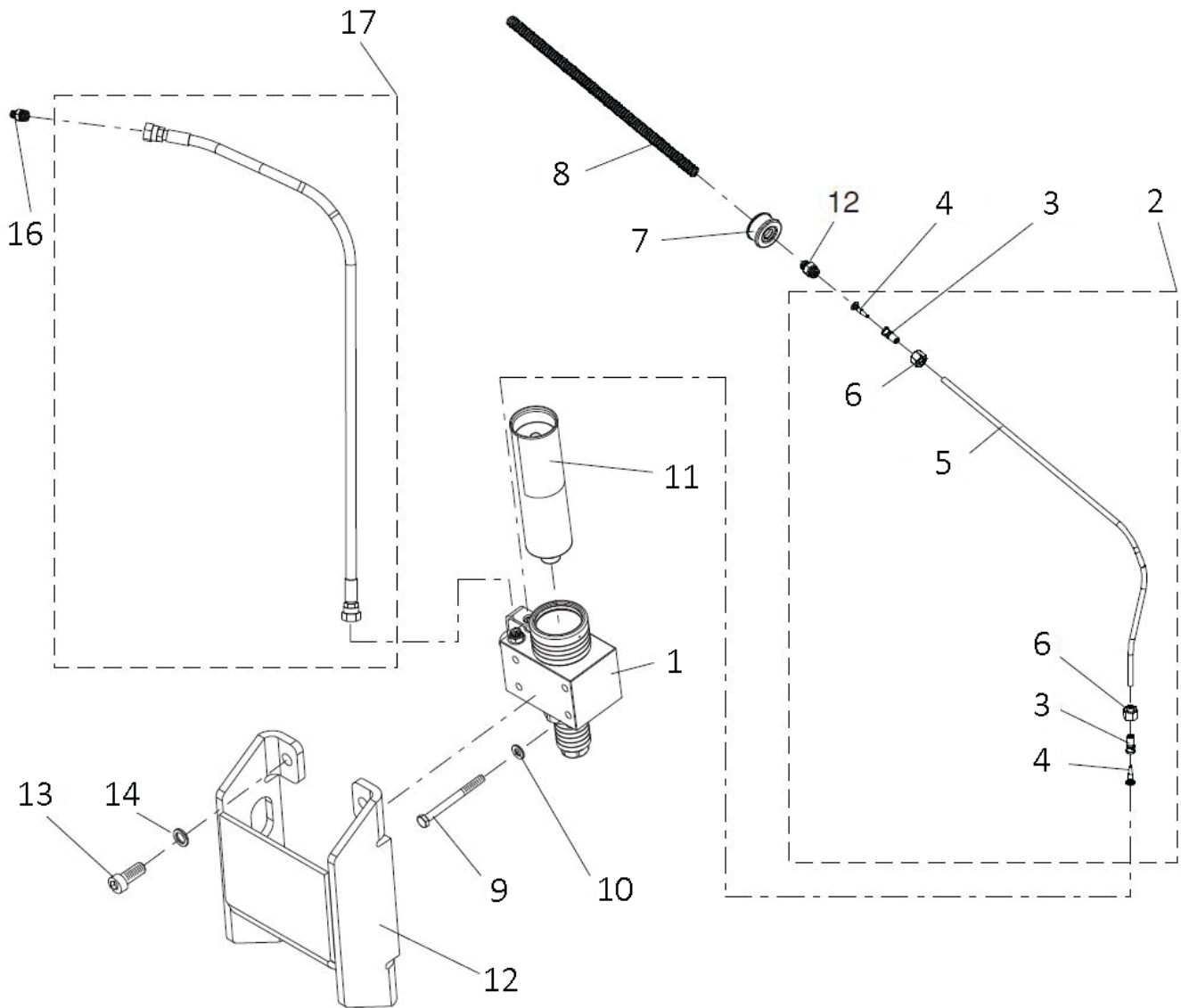
Item	Description	Part no.	Specification	Note	Qty
Kit	Service kit (incl. parts 1-4)	78669			1
1	Buffer	78603			1
2	Pad	77770			2
3	Wear plate	78611			4
4	Upper tool bushing	78650			1

MANUAL GREASING



Item	Description	Part no.	Specification	Note	Qty
1	Hose assembly (incl. parts 2-9)	77706			1
2	Sleeve	77707			2
3	Insert	77708			2
4	Hose	77709	L=480		1
5	Nut	77710			2
6	Connector	77711	BSPP 3/8		1
7	Connector	77712	BSPP 1/4		1
8	Adapter	77713			1
9	Grease zerk	77714			1
10	Pipe clamp	77715			1
11	Plug	77716			4
12	Plug	77717			4

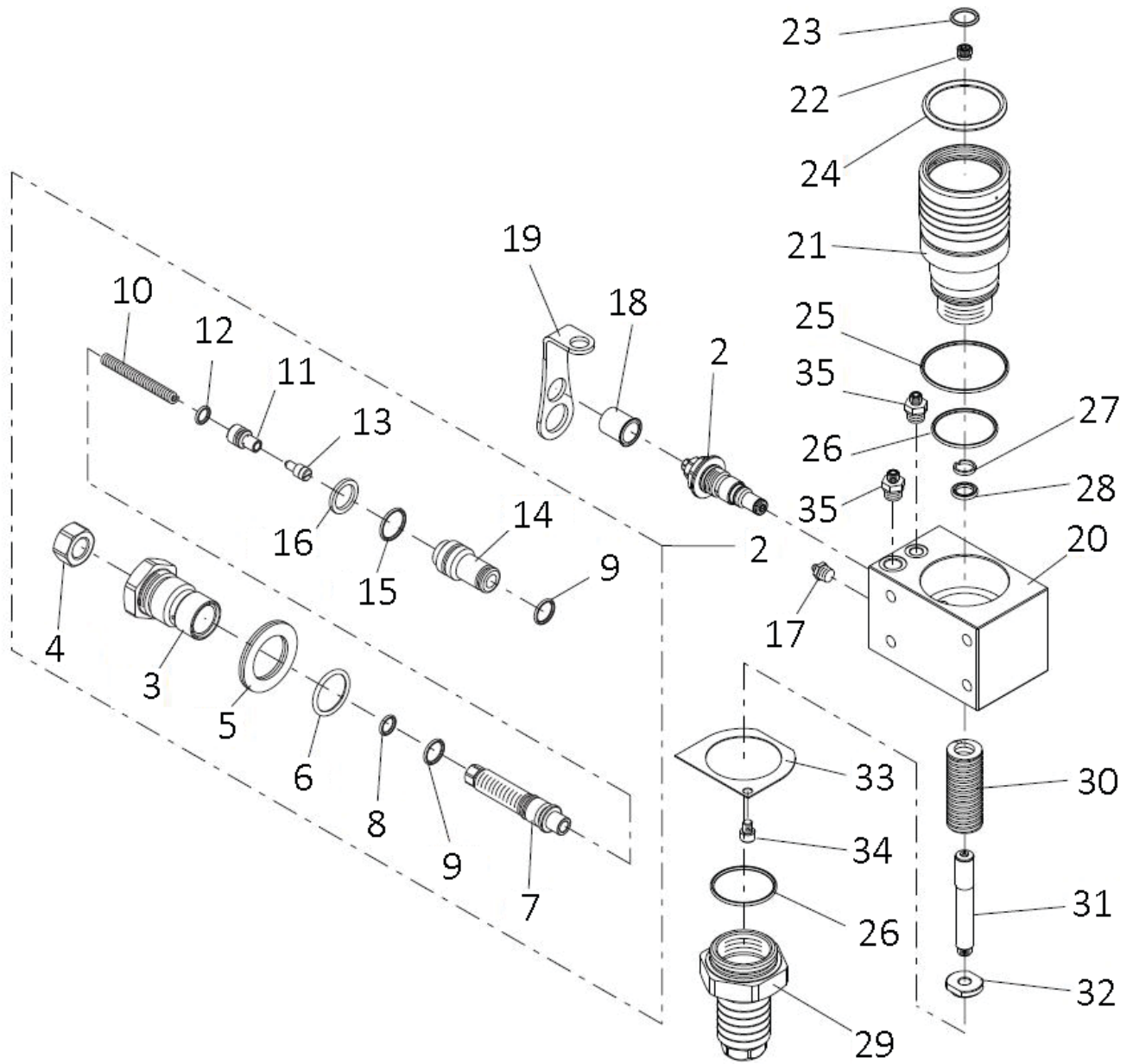
GREASING DEVICE KIT



GREASING DEVICE KIT

Item	Description	Part no.	Specification	Note	Qty
1	Greasing device RG541	77719			1
2	Hose assembly (incl. parts 3-6)	77720			1
3	Sleeve	77707			2
4	Insert	77708			2
5	Hose	77721			1
6	Nut	77710			2
7	Rubber bushing	77722			1
8	Shield	77723			1
9	Hex. screw	77724	M10x110-8.8 ISO 4014		4
10	Lock washer	77725	M10 NL 10sp NORD-LOCK		4
11	Grease cartridge	77726	Special tool grease, greasing device cartridge. Greasing device cartridges are also sold in boxes of 24		1
12	Shield	77727			1
13	Hex. socket screw	77728	M16x35-8.8 ISO 4762		4
14	Lock washer	76852	M16 NORD-LOCK		4
15	Connector	77711	BSPP 3/8		1
16	Connector	77712	BSPP 1/4		1
17	Hose assembly	77729			1

GREASING DEVICE



GREASING DEVICE

Item	Description	Part no.	Specification	Note	Qty
1	Greasing device RG541 (incl. parts 2-16)	77719			1
2	Doser (incl. parts 3-16)	77730			1
3	Plug	77731			1
4	Nut	77732	M12x1 DIN 934		1
5	Lock washer	76854	M24 NORD-LOCK	*	1
6	O-ring	77733	D21	*	1
7	Adjusting screw	77734			1
8	O-ring	77735	D8	*	1
9	O-ring	77736	D11	*	2
10	Spring	77737		*	1
11	Piston	77738			1
12	O-ring	77739	D7	*	1
13	Piston	77740		*	1
14	Body	77741			1
15	O-ring	77742	D15	*	1
16	Shim plate	77743		*	1
17	Grease zerk	77714	BSP 1/4	*	1
18	Plug	77744		*	1
19	Locking plate	77745			1
20	Body	77746			1
21	Cartridge holder	77747			1
22	Check valve	77748			1
23	O-ring	77749	D19	*	1
24	O-ring	77750	D62	*	1
25	O-ring	77751	D71	*	1
26	O-ring	77752	D52	*	2
27	Guide ring	77753		*	1
28	Seal	77754		*	1
29	Spring housing	77755			1
30	Spring	77756			1
31	Piston	77757			1
32	Nut	77758			1
33	Lock plate	77759		*	1
34	Hex. socket screw	77760	M8x10-8.8 ISO 4762	*	1
35	Connector	77712	BSPP 1/4		3
kit	Seal set for greasing device	77761			1
	(*) included in seal set for greasing device				

STANLEY®

Stanley, 1538 Highway 2,
Two Harbors, MN 55616 USA

66-48-14119-39-36-189
84-48-14119-36-236-238