

STANLEY®

PBD600 CRIMPING TOOL



USER MANUAL Safety, Operation and Maintenance



© 2017 STANLEY Black & Decker, Inc.
New Britain, CT 06053
U.S.A.
81148 3/2022 Ver. 2

TABLE OF CONTENTS

SAFETY SYMBOLS.....	4
SAFETY PRECAUTIONS	5
TOOL ANATOMY	6
SPECIFICATIONS & ACCESSORIES	7
OPERATION	8
STANLEY CRIMP SOFTWARE	9
TROUBLESHOOTING	14
PBD600 PARTS ILLUSTRATION	15
PBD600 PARTS LIST	16
PBD600 HYDRAULIC RESERVOIR ILLUSTRATION	17
PBD600 HYDRAULIC BODY ILLUSTRATION	18
PBD600 DIELESS HEAD UNIT	19

IMPORTANT

To fill out a product warranty validation form and for information on your warranty, visit www.stanleyinfrastructure.com and select the Company tab > Warranty.

Note: The warranty validation record must be submitted to validate the warranty.

SERVICING: This manual contains safety, operation and routine maintenance instructions. STANLEY Infrastructure recommends that servicing of hydraulic tools, other than routine maintenance, must be performed by an authorized and certified dealer. Please read the following warning.

⚠ WARNING

SERIOUS INJURY OR DEATH COULD RESULT FROM THE IMPROPER REPAIR OR SERVICE OF THIS TOOL.

REPAIRS AND / OR SERVICE TO THIS TOOL MUST ONLY BE DONE BY AN AUTHORIZED AND CERTIFIED DEALER.

For the nearest certified dealer, call STANLEY Infrastructure at (503) 659-5660 and ask for a Customer Service Representative.

SAFETY PRECAUTIONS

Tool operators must comply with precautions given in this manual and on the stickers attached to the tool.

These precautions are given for your safety. Review them carefully before operating the tool.

Supervising personnel should develop additional precautions relating to the specific work area and local safety regulations. Place the added precautions in the space provided on page 4.

The PBD600 6-Ton crimping tool will provide safe and dependable service if operated in accordance with the instructions in this manual. Read and understand this manual and stickers attached to the tool before operation. Failure could result in injury or tool damage.



- Do not operate the tool unless thoroughly trained or under the supervision of an instructor. Establish a training program for all operators to ensure safe operation.
- Always wear safety equipment such as eye protection, ear protection, head protection and safety shoes at all times when operating the tool. Use gloves if necessary.
- The operator must be familiar with all prohibited work areas such as excessive slopes and dangerous terrain conditions. Ensure that your footing is firm and in balance at all times.
- Do not inspect, clean or replace tool jaws while the battery is connected. Accidental engagement of the tool can cause serious injury.
- Do not operate a damaged, improperly adjusted or incompletely assembled tool.
- Never wear loose clothing that can become entangled in the working parts of the tool.
- Keep all parts of your body away from pinch points. Long hair or loose clothing can become drawn into the tool.
- To avoid personal injury or equipment damage, all tool repair, maintenance and service must be performed by an authorized service center.
- Never use the tool in the vicinity of flammable materials or gases.
- Do not use the tool or charge the tool battery in an explosive atmosphere.
- Cutting or severing of body parts is possible if proper procedures are not followed.
- Do not use the tool, battery or battery charger for purposes other than what is described in this manual.

- Always keep critical tool markings, such as labels and warning stickers, legible. Contact STANLEY for replacement labels.
- Do not use the tool while under the influence of drugs or alcohol.
- Do not use accessories or attachments other than those recommended by STANLEY.

BATTERIES

- Only charge batteries using a STANLEY recommended battery charger.
- Do not store batteries with metal objects, such as coins, nails or keys. Fire can result if battery terminals are shorted.
- Do not charge a damaged battery. Recycle and replace damaged batteries with batteries recommended by STANLEY.
- Do not incinerate or dispose of batteries in the garbage. Recycle the batteries.
- Do not expose the battery to temperatures over 265°F. Batteries may explode at high temperatures.
- Leakage of liquid from the battery may occur under extreme use or high temperatures. If battery liquid gets on your skin:
 1. Wash quickly with soap and water.
 2. If the liquid gets in your eyes, flush your eyes with clean water for 10 minutes. Seek medical attention immediately.
- Never open the battery.

BATTERY CHARGER

- Do not use the battery charger if the cord is damaged.
- Do not place the charger, or set items on or near the charger, in such a way as to block airflow to the charger.
- Do not use the charger with an extension cord unless absolutely necessary. Use a cord with the proper wire size for its length, as described in Table 1.

Length of Cord (Feet)	25	50	100	150
Wire Size (AWG)	18	18	18	16

Table 1: Extension Cord Wire Size

- Do not open the charger or attempt to modify it in any way.
- Disconnect the charger from power before attempting to clean it.
- Do not connect the charger to a transformer or engine generator.

TOOL ANATOMY

WHAT IS THE PBD600 CRIMPING TOOL?

The PBD600 is a battery powered 6-ton dieless crimping tool with a flip-top, 4 point head. PBD600 is capable of crimping copper and aluminum connectors to 750 MCM.

⚠ DANGER

DO NOT put fingers, hands or other body parts inside the crimping jaw. Serious injury will result!



SPECIFICATIONS & ACCESSORIES

SPECIFICATIONS

Crimping Force6 Tons (53 kN)
Crimping Capacity Copper/Aluminum Connectors to 750 MCM
Jaw Type Flip-top 4 Point, Dieless

Battery Type DEWALT 20V Max, 5 amp/hour
Estimated Crimps per Battery Charge 300
Tool Cycle Time 6.5 seconds

Tool Weight 12.55 Lbs.

Tool Length 17.5 Inches

Maintenance Interval 25,000 Cycles

ACCESSORIES

5 Amp/hour Lithium Ion Battery 81188

120V AC Charger 81189

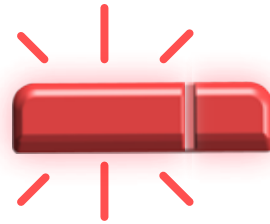
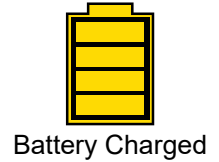
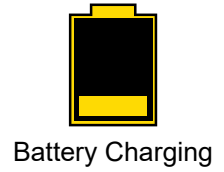
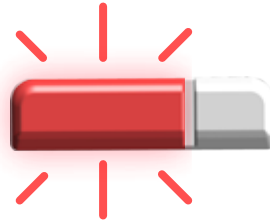
12V DC Charger DCB119

Note: Only use battery chargers recommended by STANLEY.

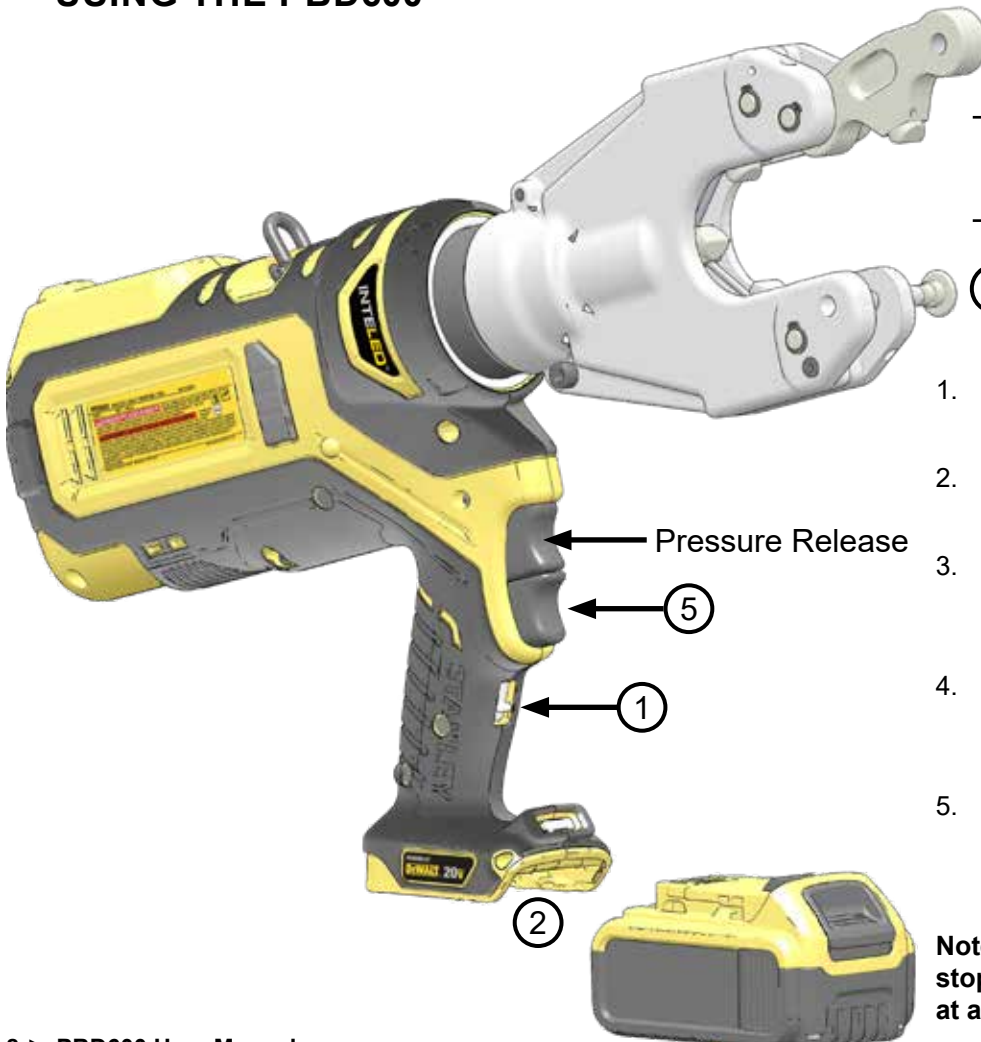
Bucket Bag BB01

OPERATION

CHARGE BATTERY



USING THE PBD600



⚠ DANGER

Set the Trigger Lock **BEFORE** inserting or removing material from the Crimping Jaw.

1. Set the trigger lock.
2. Insert battery.
3. Pull out the jaw pin and open the crimping jaw.
4. Close the crimping jaw and lock the jaw pin into place.
5. Release the trigger lock. Press and hold the trigger until the crimp is complete. Press and hold the pressure release to open the cutting jaw.

Note: Release the trigger to immediately stop the tool. Press the pressure release at any time to open the jaws.

OPERATION

INTELED SYSTEM

The InteLED light ring shows the status of the crimp in real-time.

White - The tool is crimping. InteLED will stay lit for 30 seconds after the crimp is complete.

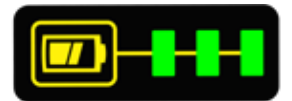
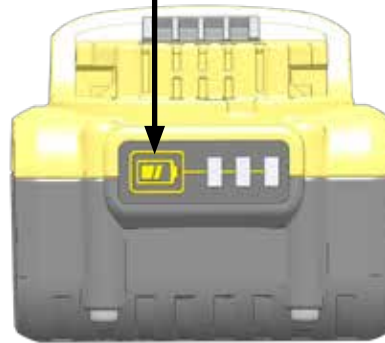
Green - The tool has developed full hydraulic pressure during the crimp. The crimp is good.

Red - The tool did not develop full pressure during the crimp. Crimp again.

CHECKING BATTERY CHARGE



Battery Charge Button



75 - 100% Charged



51 - 74% Charged



Less than 50% Charged



Charge Battery

STANLEY CRIMP SOFTWARE

STANLEY Crimp software provides valuable data about each crimp. It is also required to update the tool firmware.

INSTALLATION

1. Download the STANLEY Crimp software from the STANLEY Infrastructure website.

www.stanleyinfrastructure.com/products/cordless-td

Note: STANLEY Crimp software requires a minimum of Windows XP SP3 running with administrator rights.

2. Follow the prompts on screen to complete installation.
3. Connect PBD600 to a PC using a micro USB cable.

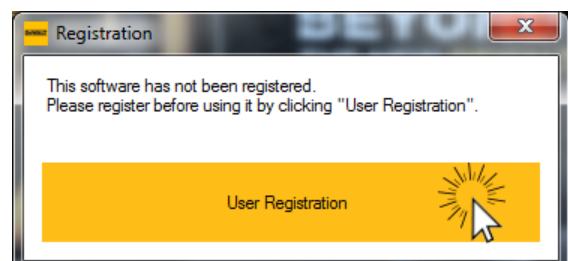
Note: InteLED will shine blue when connected.

FIRST RUN

1. Run the software using the STANLEY Crimp software icon on your Windows desktop.
2. You will be prompted to register your software. Left click the "User Registration" button.
3. Fill out the registration form and click "Register".



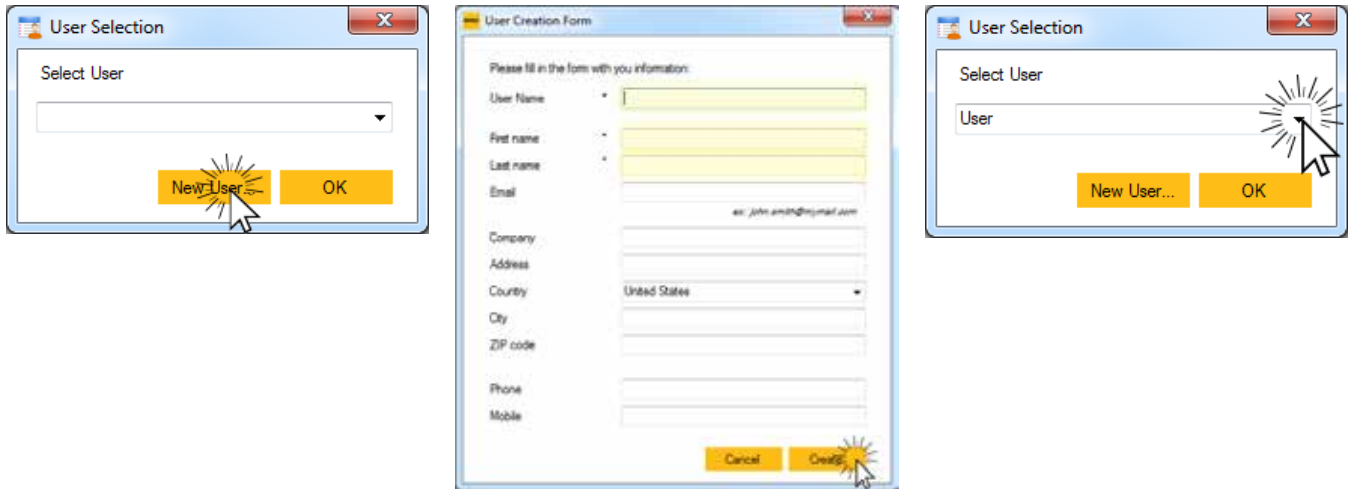
PBD600 USB Connection



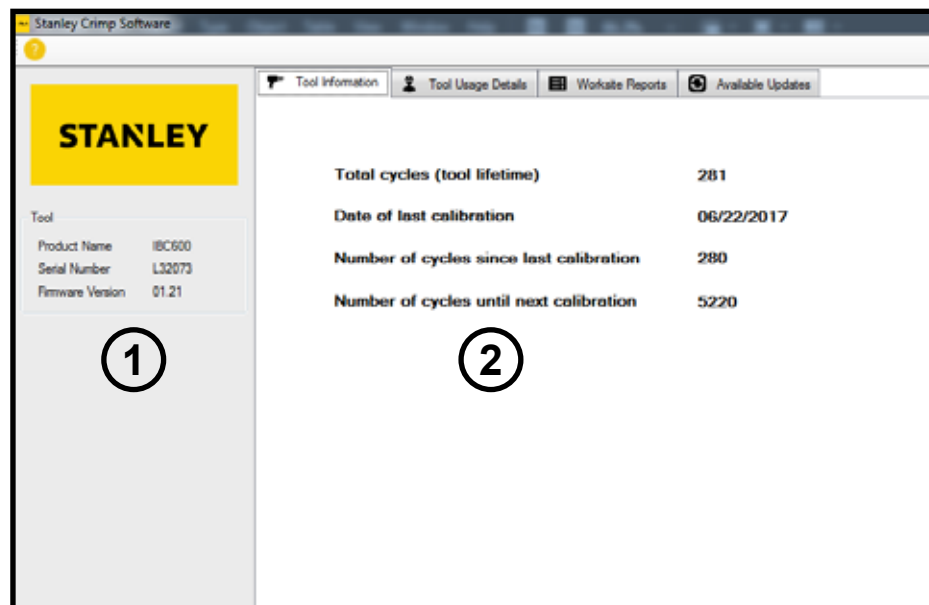
OPERATION

USER SELECTION

1. Click the “New User” button
2. Enter the required user information and click “Create”.
3. Select a user and click “OK”.



TOOL INFORMATION



The Tool Information tab displays important data about the PBD600.

1. Displays the product type, serial number and firmware version of the tool.
2. Basic data relating to the life and service interval of the tool.

OPERATION

TOOL USAGE DATA

Stanley Crimp Software

STANLEY

Tool
Product Name: IBC600
Serial Number: L32073
Firmware Version: 01.21

Tool Cycles (number of cycles)

Total	280	Show only since last calibration	<input type="checkbox"/>
Cycle Complete	222	Show only calibration cycles	<input type="checkbox"/>
Cycle Not Complete	58	Show only not complete cycles	<input type="checkbox"/>

Time Stamp	Cycle Complete	Current (Amps)	Voltage (V)	Temperature (F/C)
06/21/2017 22:48	Yes	13.3	19.2	37 / 3
06/21/2017 23:41	Yes	16.4	19.4	80 / 27
06/21/2017 23:42	Yes	15	19.4	80 / 27
06/21/2017 23:43	No	16.2	19.3	80 / 27
06/21/2017 23:43	Yes	16.7	19.3	80 / 27
06/21/2017 23:43	Yes	16.1	19.3	80 / 27
06/21/2017 23:43	No	16.5	19.3	80 / 27
06/21/2017 23:43	Yes	16.4	19.3	80 / 27
06/21/2017 23:43	No	16.1	19.3	80 / 27
06/22/2017 00:01	No	14.3	19.4	80 / 27
06/22/2017 23:50	No	14.8	19.5	80 / 27
06/22/2017 23:50	Yes	18.7	19.5	86 / 30
06/22/2017 23:50	Yes	19.3	19.6	84 / 29
07/31/2017 17:02	Yes	19.3	20.2	86 / 30
08/04/2017 09:01	Yes	15.5	20.1	82 / 28
08/04/2017 09:01	No	15.9	20.1	82 / 28

The Tool Usage Data tab displays information about individual tool cycles.

1. Displays the total number of tool cycles, as well as completed and non-complete cycles.
2. The data log shows each cycle, up to 250,000 cycles. Each entry into the log includes;
 - Date and time of each crimp
 - If the cycle completed successfully
 - Amperage and Voltage of the tool during each crimp
 - Tool temperature at the end of each crimp
3. Data log sorting filters. Allows you to sort the crimp data in the data log.

WORKSITE REPORTS

Stanley Crimp Software

STANLEY

Tool
Product Name: IBC600
Serial Number: L32073
Firmware Version: 01.21

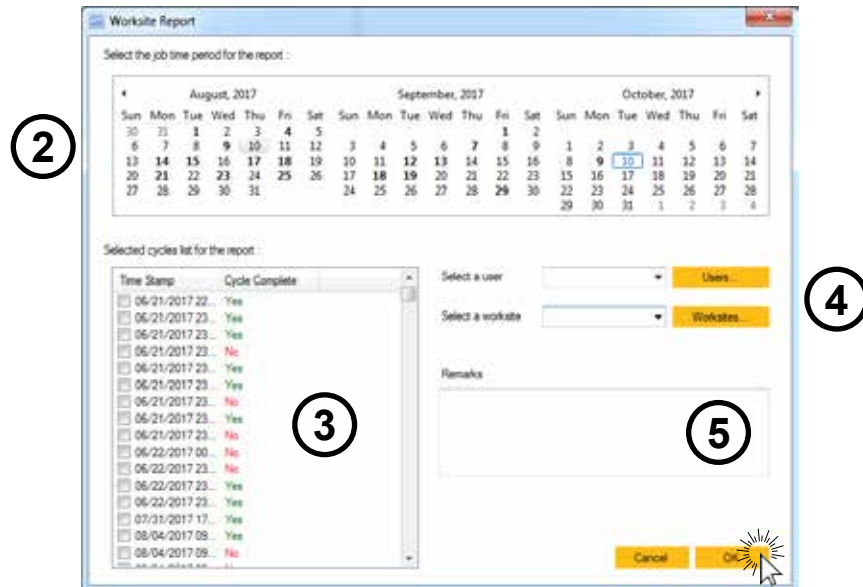
Worksite Reports

Worksite	Tool	Serial Number	Version	Date	Total	Complete	Not Complete
----------	------	---------------	---------	------	-------	----------	--------------

1 Create Report
Delete Report
Print Report to PDF

OPERATION

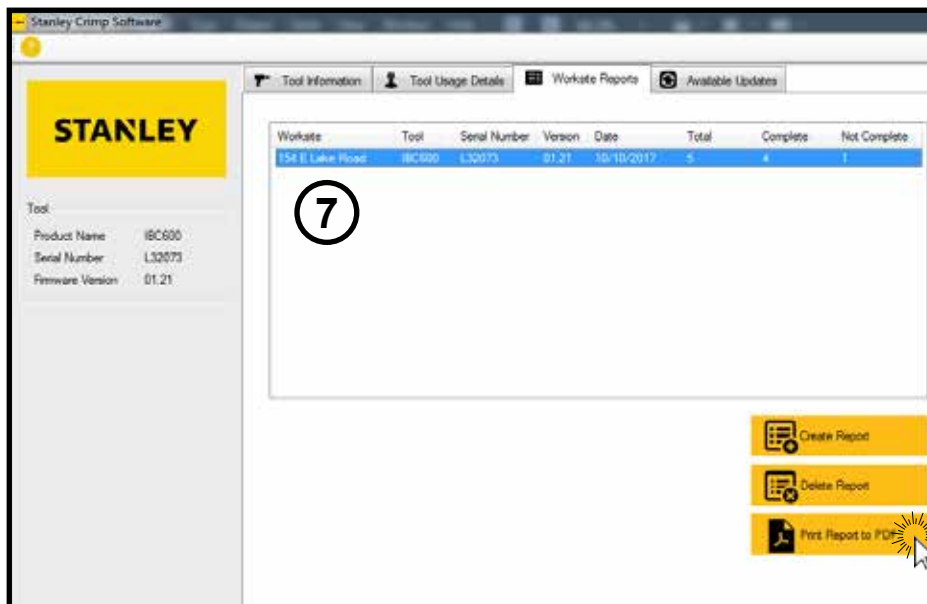
The Worksite Reports tab allows you to group data log entries into a complete tool cycle report.



1. Click “Create Report”.
2. Select the date range of the job you are reporting.
3. Select the crimp cycles you want to include in the report.
4. Select a user and a worksite.

Note: If this is the first time using the software, press the “Worksites” button to create a worksite.

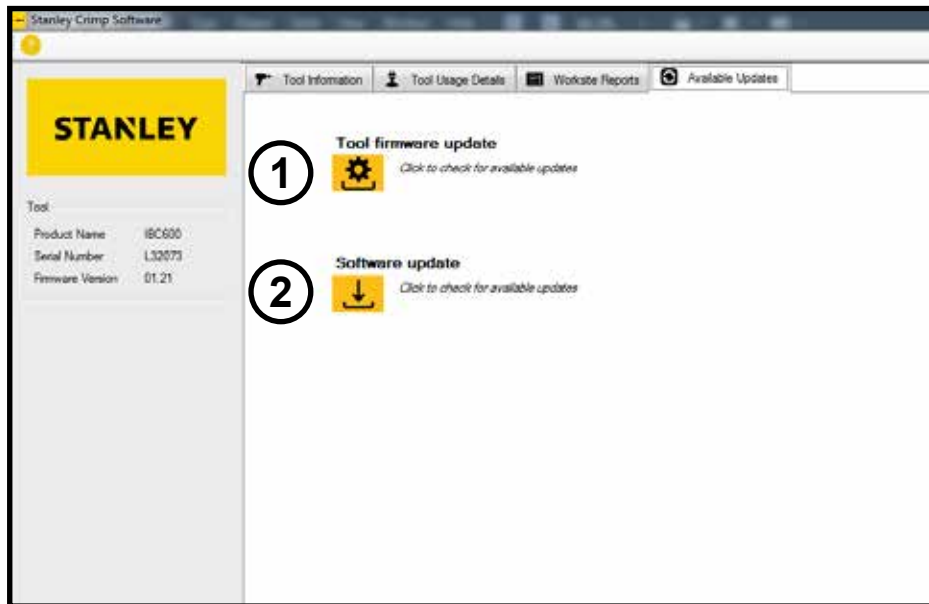
5. Enter notes about the job in the Remarks field.
6. Click “OK” when finished.



7. Select a report from the reports list.
8. Click “Print Report to PDF” to export the Worksite Report.

OPERATION

AVAILABLE UPDATES



The Available Updates tab will allow you to update the tool firmware and update STANLEY Crimp software.

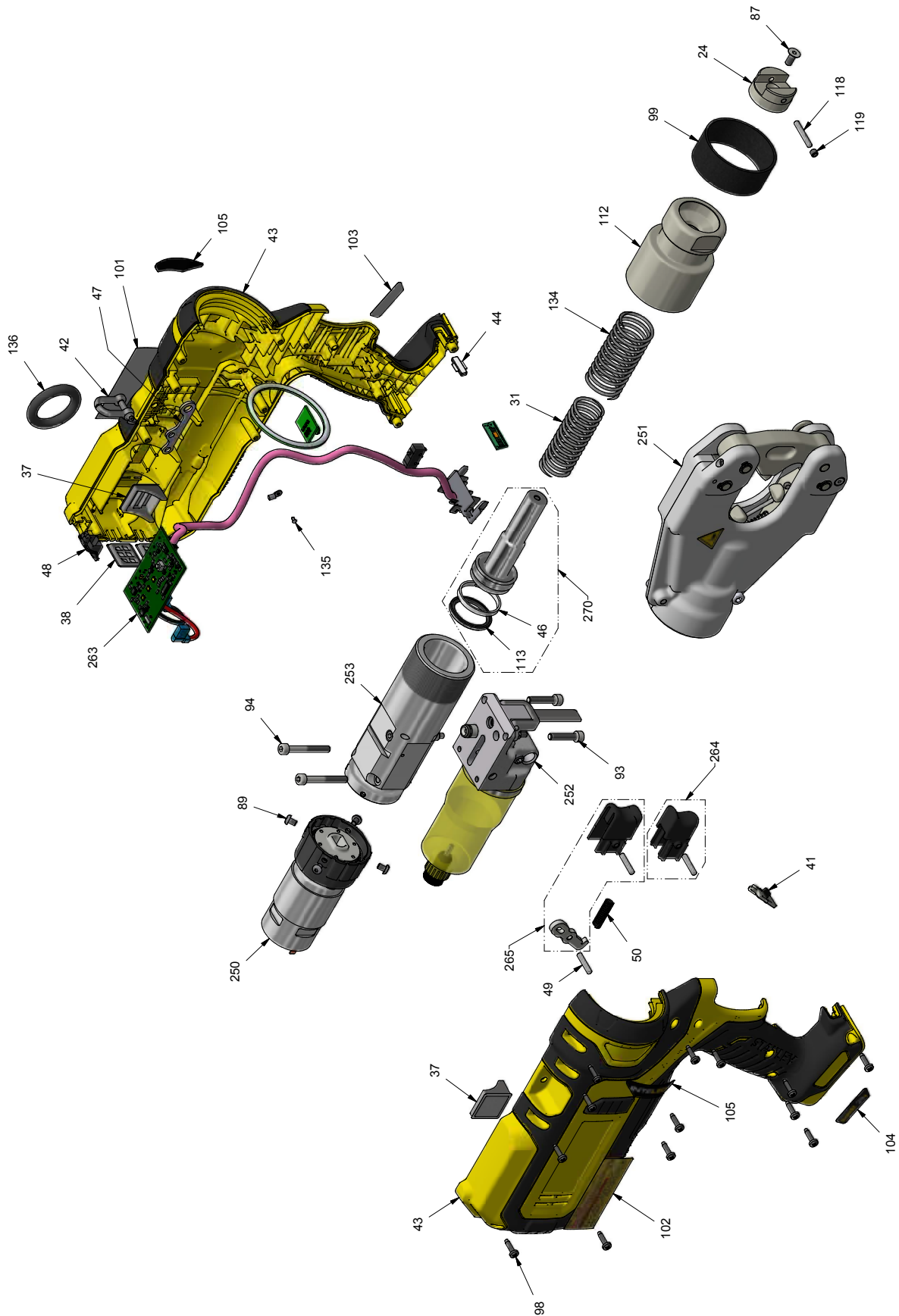
1. Tool Firmware Update button. When clicked, this will begin to tool firmware update process. Do not unplug the tool during this process.
2. Software Update button. When clicked, this will update the STANLEY Crimp software, if an update is available.

OPERATION

TROUBLESHOOTING

Problem	Solution
The tool won't crimp when I press the trigger.	Ensure the battery is charged. Disengage the trigger lock.
The InteLED flashes yellow when I activate the tool.	The maintenance interval is about to elapse. Have the tool serviced as soon as possible.
The tool repeatedly give me bad crimps / The InteLED flashes red after every crimp.	Ensure the battery is fully charged. If problem persists, have the tool serviced as soon as possible.
The tool is leaking hydraulic oil.	Have the tool serviced immediately.
The tool cannot connect to STANLEY Crimp software.	Ensure the tool is connected to the computer via the USB port and that InteLED is blue. Your computer may be downloading USB drivers. Check the Windows system tray for download progress.
The tool is not saving data.	Have the tool serviced as soon as possible.

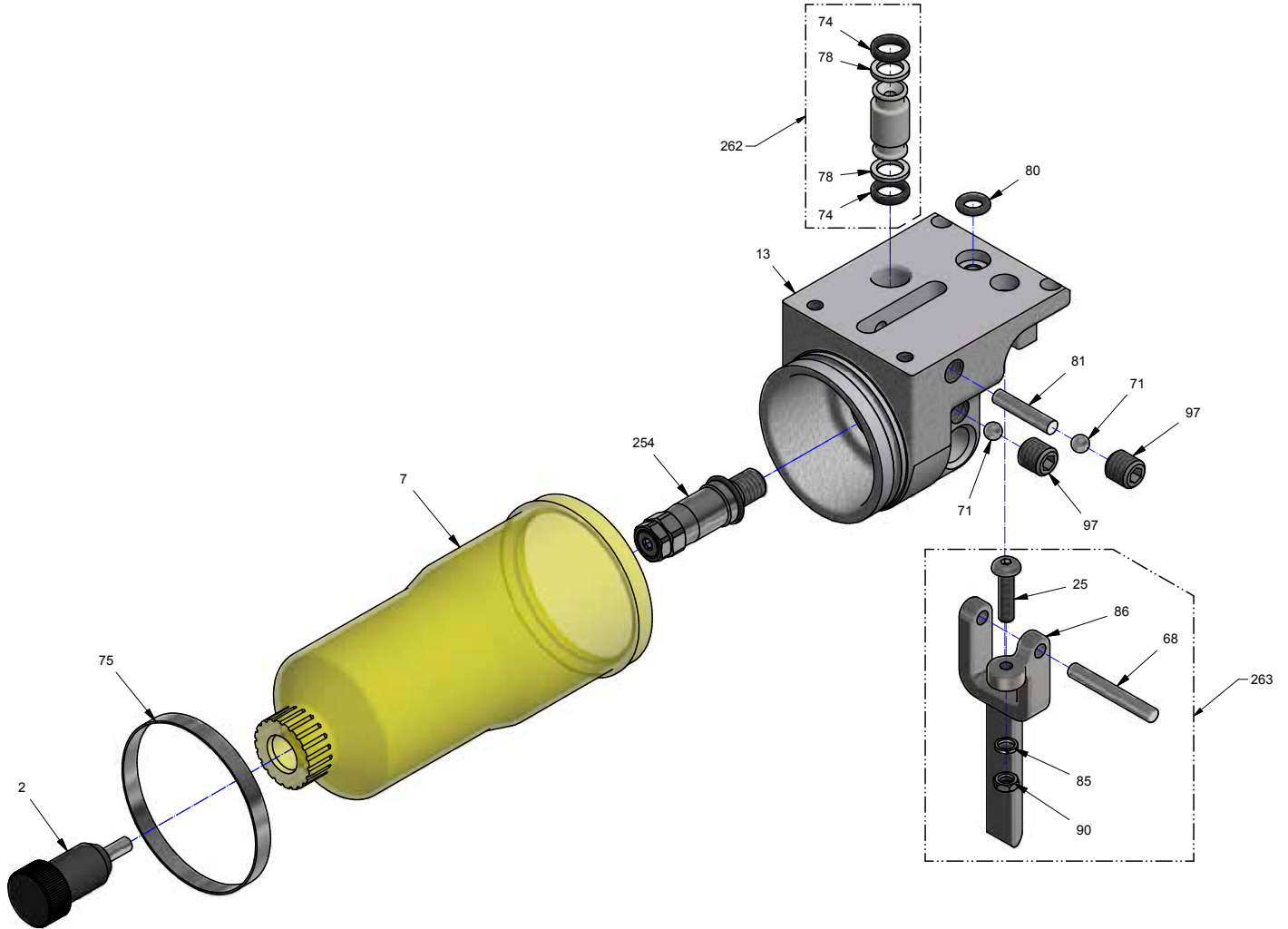
PBD600 PARTS ILLUSTRATION



PBD600 PARTS LIST

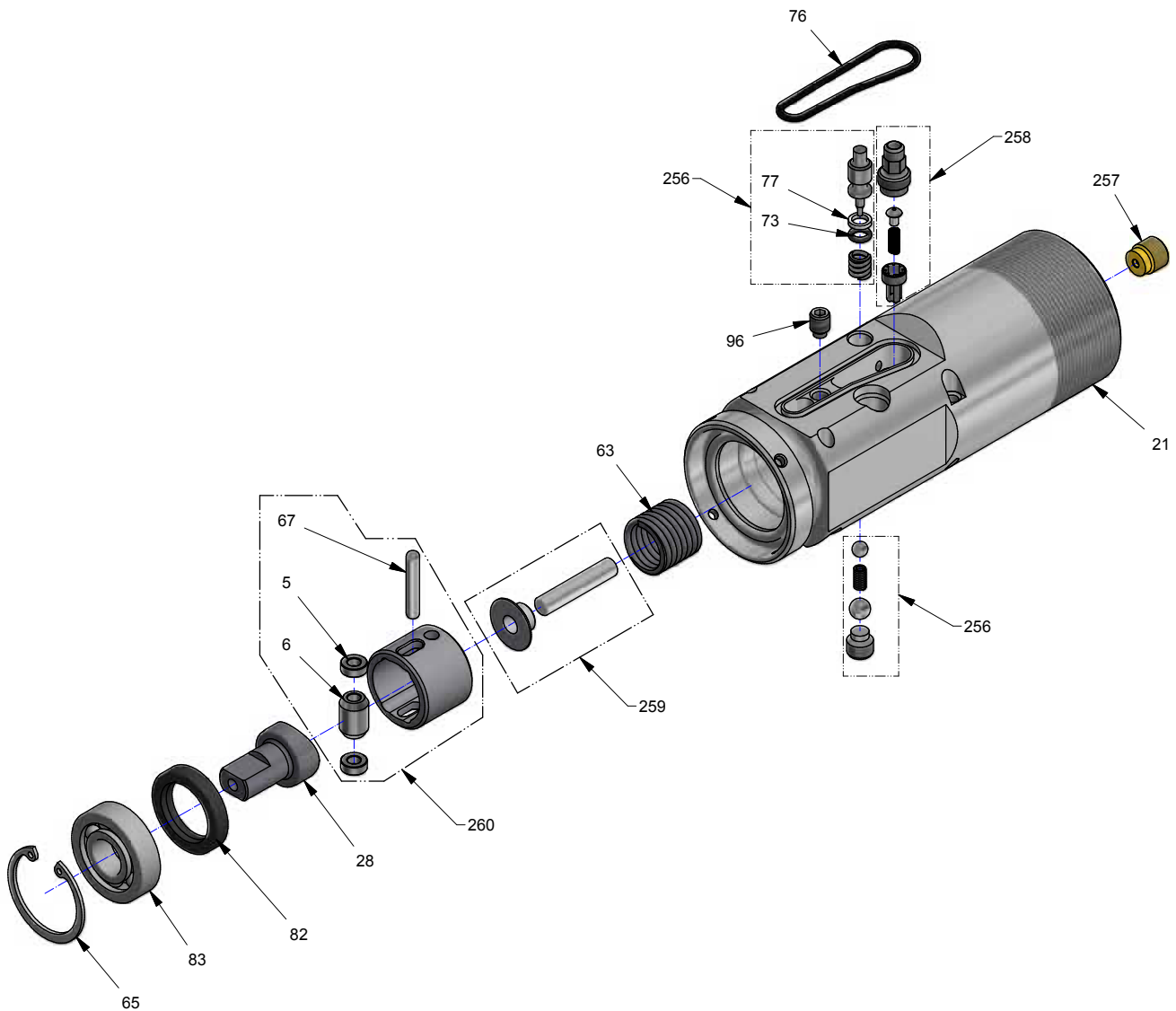
ITEM	P/N	QTY	DESCRIPTION
24	78532	1	Fork
31	77033	1	Spring
37	91649	2	Side Membrane
38	91650	2	Rear Membrane
41	91655	1	Trigger Lock
42	77058-01	1	Shackle
43	91593-STA	1	Housing Set
44	91439	1	Lens LED
46	SGET3200390	1	Guiding Segment
47	77051-01	1	Shackle Holder
48	91410	1	USB Cover
50	77061	1	Spring
87	VAV05FH012Z	1	Screw
89	VAV04CB006	4	Screw
93	VAV05HC025	2	Screw
94	VAV05HC040	2	Screw
98	VAV3.5TC014ZN	13	Screw
99	91350	1	Protection Cover
101	91633	1	STANLEY Label
102	91638	1	PBD600 Label
103	91634	1	"Powered By DEWALT" Label - Right
104	91635	1	"Powered By DEWALT" Label - Left
105	91636	1	IntelLED Label
112	78530	1	Nose
113	JGR350275032	1	Glyding Ring Seal
118	AIG4X25.8BP	1	Calibrated Pin
119	VAV05CV005	1	Screw
134	77034	1	Screw
135	ACKR0204	2	Grooved Pin
136	91465	1	Strap Ring
250	91856	1	Motor Reduction Unit
251	91831	1	Dieless Head Unit
252	See page 17	1	Reservoir Unit
253	See page 18	1	Hydraulic Unit
263	92886	1	Electronic Device
264	77853-STA	1	Advance Trigger Unit
265	77854-DEW	1	Release Trigger Unit
270	91822C	1	Piston Unit

PBD600 HYDRAULIC RESERVOIR ILLUSTRATION



ITEM	P/N	QTY	DESCRIPTION
2	30176DUB	1	Reservoir Plug
7	91569	1	Oil Reservoir
13	77001-02	1	Reservoir Body
25	VAV04CB015	1	Screw
68	AIG4X29.8BP	1	Calibrated Pin
74	J0640190	2	O-Ring
75	91576	1	Metal Clamp
78	JAE0700150	2	Anit-extrusion Ring
80	J0420250	1	O-Ring
81	ZBINA420	1	Magnet Pin
85	VAR04W	1	Washer
86	91232	1	Release Trigger
90	VAE04	1	Nut
97	VAV08BP008	2	Screw
254	92884-11	1	Overload Valve
262	77851C	1	Bodies Connector Unit
263	77852-DEW	1	Release Lever Unit

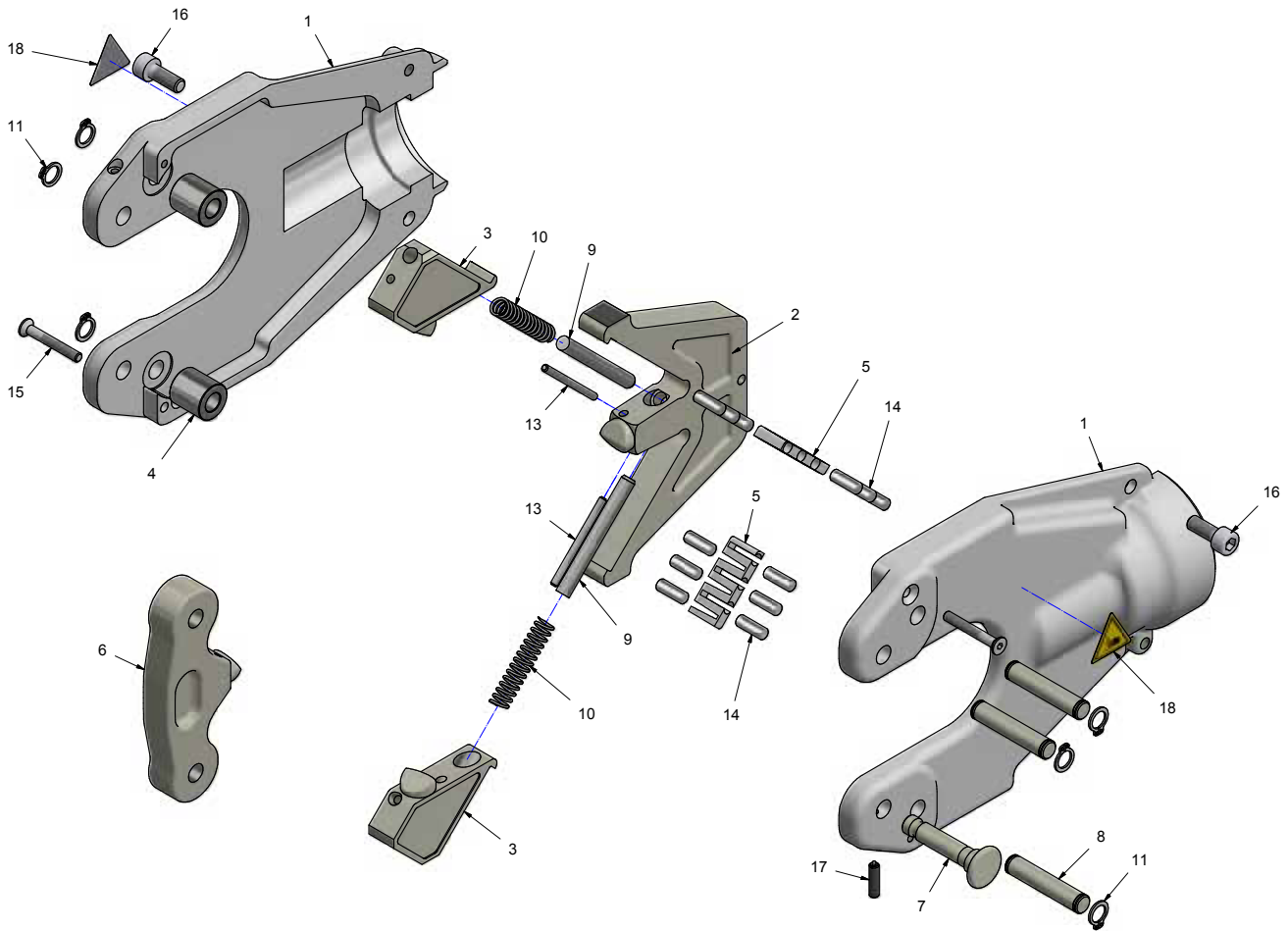
PBD600 HYDRAULIC BODY ILLUSTRATION



ITEM	P/N	QTY	DESCRIPTION
5	77286	2	Cam Roller
6	70048DUB	1	Sleeve
21	78531	1	Hydraulic Body
28	77026-01	1	Cam
63	87213	1	Spring
65	AAIN30	1	Circlip
67	AIG4X23.8BR	1	Calibrated Pin
73	J0290178PU70	1	O-Ring
76	J3500200	1	O-Ring
77	JAE0500100	1	Anti-extrusion Ring
82	JSR1927205	1	Wiper Ring

ITEM	P/N	QTY	DESCRIPTION
83	R1B12.30.08Z	1	Ball Bearing
96	VAV06TT008	1	Screw
256	77803	1	Release Device
257	77805-01	1	Delivery Unit
258	77806-01	1	Suction Valve Unit
259	77848C-01	1	Spring Collar Unit
260	77849C	1	Cam Compartment Unit

PBD600 DIELESS HEAD UNIT



ITEM	P/N	QTY	DESCRIPTION
1	78542	2	Dieless Head
2	78543	1	Dieless Axial Pin
3	78544	2	Side Pin
4	78545	2	Roller
5	78546	2	Needle Holder
6	78548	1	Front Pin
7	78550	1	Jaw Pin
8	91205	3	Pin
9	91217	2	Calibrated Pin
10	91218	2	Spring
11	AAEN08	6	Elastic Ring
13	AGCR0340	2	Pin
14	AIG5X13.8BP	12	Calibrated Pin
15	VAV04FH030Z	2	Screw
16	VAV06HC016Z	2	Screw
17	ZNLM03055-04	1	Spring Plunger
18	ZSETPD337	2	Crush Hazard Label

STANLEY®

STANLEY Infrastructure
6430 SE Lake Road
Portland, Oregon 97222 USA
(503) 659-5660 / Fax (503) 652-1780
www.stanleyinfrastructure.com