

STANLEY®

SFP 1850 COMPACTION FORWARD PLATE



SFP 1850

PARTS MANUAL



© 2015 Stanley Black & Decker, Inc.
New Britain, CT 06053
U.S.A.
74929 3/2016 Ver 4

TABLE OF CONTENTS

MACHINE INFORMATION	3
ADHESIVES	4
SFP 1850 PARTS	5 - 10
DECALS	11
MAINTENANCE KIT	12
WEAR PARTS KIT, SPRING ELEMENT	13
WEAR PARTS KIT, BASE PLATE	14
REPAIR KIT EXCITER	15

IMPORTANT

To fill out a Product Warranty Validation form, and for information on your warranty, visit Stanleyhydraulics.com and select the Company tab, Warranty.
(NOTE: The warranty Validation record must be submitted to validate the warranty).

SERVICING: This manual contains spare parts. Stanley Hydraulic Tools recommends that servicing this machine, other than routine maintenance, must be performed by an authorized and certified dealer. Please read the following warning.

⚠ WARNING

SERIOUS INJURY OR DEATH COULD RESULT FROM THE IMPROPER REPAIR OR SERVICE OF THIS TOOL.

REPAIRS AND / OR SERVICE TO THIS TOOL MUST ONLY BE DONE BY AN AUTHORIZED AND CERTIFIED DEALER.

For the nearest authorized and certified dealer, call Stanley Hydraulic Tools at the number listed on the back of this manual and ask for a Customer Service Representative.

MACHINE INFORMATION



Important!

In order to enable spare parts orders to be processed quickly and correctly, we require the following data:

1. Machine type: _____

2. Machine number: _____

3. Motor type: _____

(enter here for your own use; the data is shown on the type plate of the machine)

4. Article designation, article number and quantity.

5. Dispatch mode (by post, express or air mail delivery, forwarding agent or distributor.

6. Address.

Only original spare parts ensure a perfect condition tested by us; no warranty can be given if original spare parts are not used.

In case of warranty claims, send in the damaged part and notify your authorised dealer or our service department prior to repairing the damage (fax: 503-652-1780 / Phone: 503-659-5660).

In case of warranty claims for combustion engines, please contact the engine manufacturer or one of his authorised repair workshops to repair the damage or process the warranty claim.

Because of the steady development of our products, the shown illustrations are non-committal.

To order spare parts, please contact your local dealer or write to

Stanley Hydraulic Tools

3810 SE Naef Rd

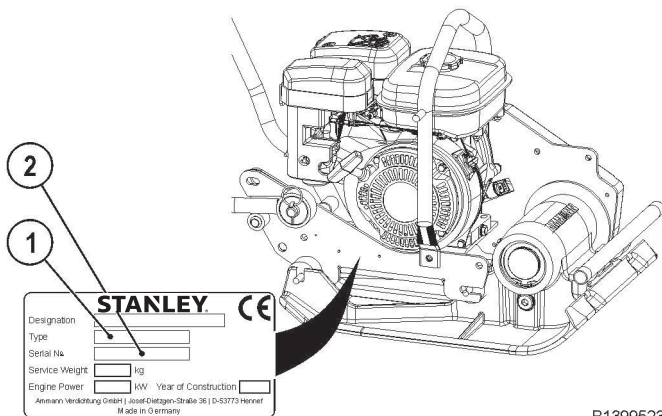
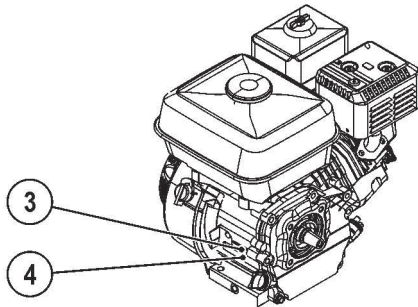
Milwaukie, OR 97267

Ph: 503-659-5660

Fax: 503-652-1780

www.stanleyhydraulics.com

HONDA



B1399523

ADHESIVES

Sealing- and bonding adhesives

A1	1	2-9L0 00 002	Loctite 262	250 ml
A2	2	2-806 05 260	Loctite 5205	300 ml
A3	3	2-806 02 010	Shell Alvania R3	1.0 kg
A4	4	2-9IH 00 001	Epple 22	250 ml
A5	5	2-9K0 00 020	Klüber 46 MR401	0.75 kg
A6	6	2-806 05 060	Atmosit Compact	75 ml
A7	7	2-806 05 200	Sico Met 50	20 g
A8	8	2-806 05 170	Omni Visc 1002	
A9	9	2-806 02 050	Shell Alvania EP1	600 g
A10	10	2-806 05 310	Beta Link K1	
A11	11	2-806 03 017	Metaflux	
A12	12	2-806 05 290	Loctite 5910	300 ml
A13	13	2-9L0 00 001	Loctite Cleaner 7063	450 ml
A14	14	2-9L0 00 006	Loctite 221	50 ml
A15	15	2-806 05 090	Omni Visc 1050	50 ml
	16	2-9L000005	Loctite 638	250 ml

TAB01010.cdr

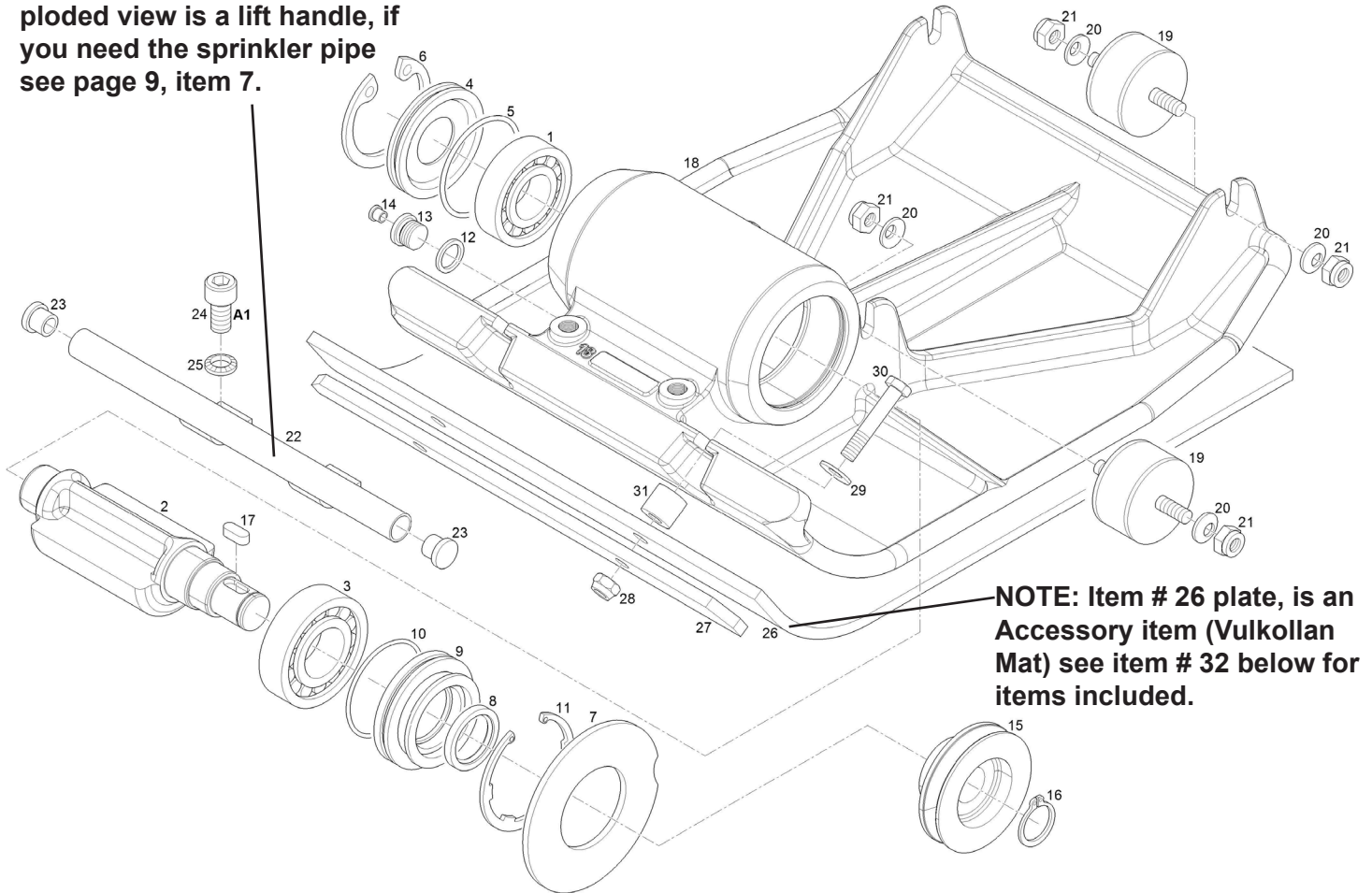
as specified in the individual exploded views

Conversion: Newton-Meters to in. lb. and ft. lb.

Nm	In. lb.	Ft. lb.
5	44.2	3.6
10	88.5	7.3
15	132	11.0
20	177	14.7
25	221.2	18.4
30	265.5	22.1
35	309.7	25.8
40	354	29.5
45	398.2	33.1
50	442	36.8
55	486.7	40.5
60	531	44.2

SFP 1850 PARTS

NOTE: Item # 22 in this exploded view is a lift handle, if you need the sprinkler pipe see page 9, item 7.

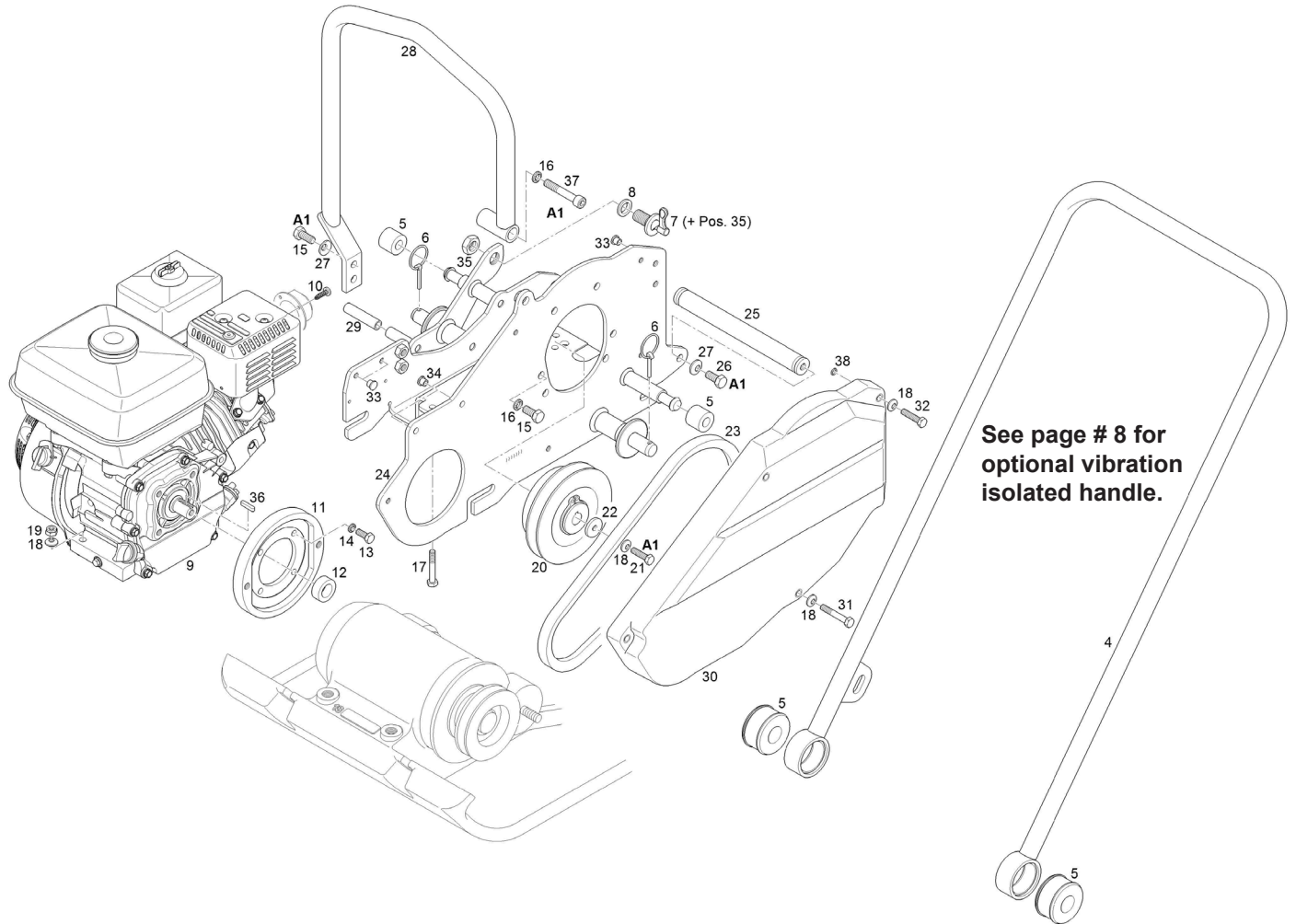


NOTE: Item # 26 plate, is an Accessory item (Vulkollan Mat) see item # 32 below for items included.

Item #	Part #	Qty	Description
1	75406	1	Cylindrical roller bearing
2	75170	1	Exciter shaft
3	75407	1	Cylindrical roller bearing
4	75104	1	Joint disk
5	75429	1	O-Ring
6	75486	1	Retaining ring
7	75120	1	Joint disk
8	75417	1	Shaft sealing ring
9	75116	1	Sealing flange
10	75440	1	O-Ring
11	75487	1	Retaining ring
12	75456	1	Joint washer
13	75671	1	Screw plug
14	75651	1	Plastic plug
15	75169	1	Pulley
16	75496	1	Retaining ring
17	75479	1	Key
18	75167	1	Base plate

Item #	Part #	Qty	Description
19	75390	4	Rubber buffer
20	75528	8	Conical spring washer
21	75755	8	Hexagon nut M12
22	75144	1	Grip Handle, Note: this item is not part of the water sprinkler, see page 9.
23	75655	2	Plastic plug
24	75693	2	Socket head cap screw
25	75525	2	Lock washer
26	75166	1	Plate
27	75184	1	Flat steel
28	75755	2	Hexagon nut M12
29	75528	2	Conical spring washer
30	75719	2	Hex hd cap screw M12x80
31	75168	2	Bush
32	75882	1	Vulkollan plate, assy. Includes items 26 thru 31.
33	75165	1	Base plate / Exciter, assy. Includes items 1 thru 18.

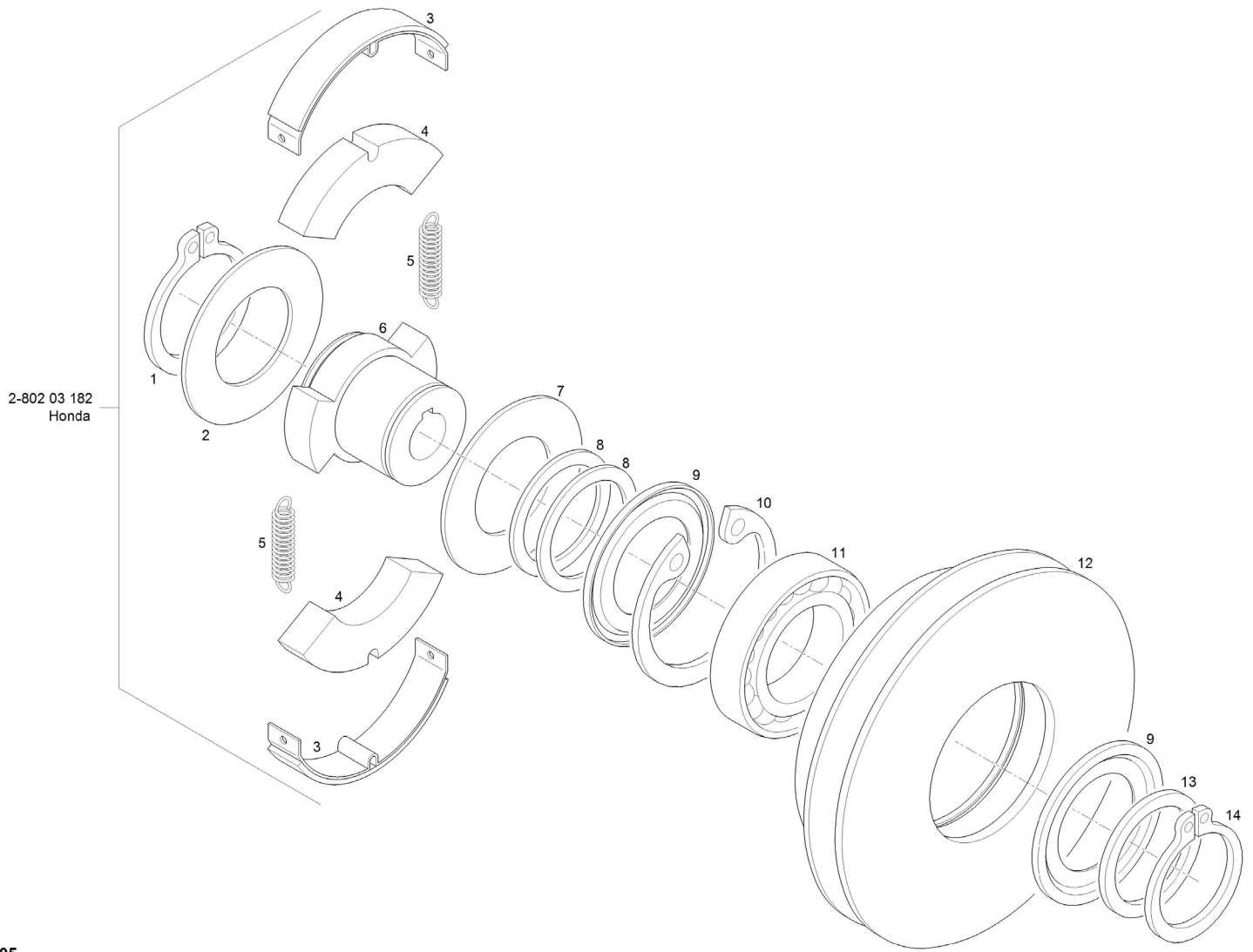
SFP 1850 PARTS



Item #	Part #	Qty	Description
4	75176	1	Tow bar
5	75105	2	Spring element, kit
6	75540	2	Split pin
7	75639	1	Locking bolt (Incl item 35)
8	75526	1	Lock washer
9	75632	1	Engine
10	75778	2	Self-tapping screw
11	75177	1	Flange
12	75178	1	Distance ring
13	75727	4	Hex hd cap screw M8x20
14	75521	4	Lock washer
15	75733	5	Hex hd cap screw M10x25
16	75522	3	Lock washer
17	75708	4	Hex hd cap screw M8x40
18	75531	10	Conical spring washer
19	75753	4	Hexagon nut M8
20	75582	1	Centrifugal clutch, assy.

Item #	Part #	Qty	Description
21	75729	1	Hex hdCap screw M8x30
22	75316	1	Washer
23	75461	1	V-belt
24	75172	1	Engine consol
25	75171	1	Round bar steel
26	75731	2	Cap screw M10x20
27	75530	4	Conical spring washer
28	75174	1	Hoop guard
29	75385	1	Plastic hose
30	75173	1	V-belt guard
31	75711	2	Hex hd Cap screw M8x60
32	75730	3	Hex hd Cap screw M8x35
33	75649	4	Plastic plug
34	75650	2	Plastic plug
35	75750	1	Hexagon nut M20x1.5
36	75872	1	Key
37	75690	1	Socket hd cap screw
38	75433	5	O-Ring

SFP 1850 PARTS



2-802 03 182
Honda

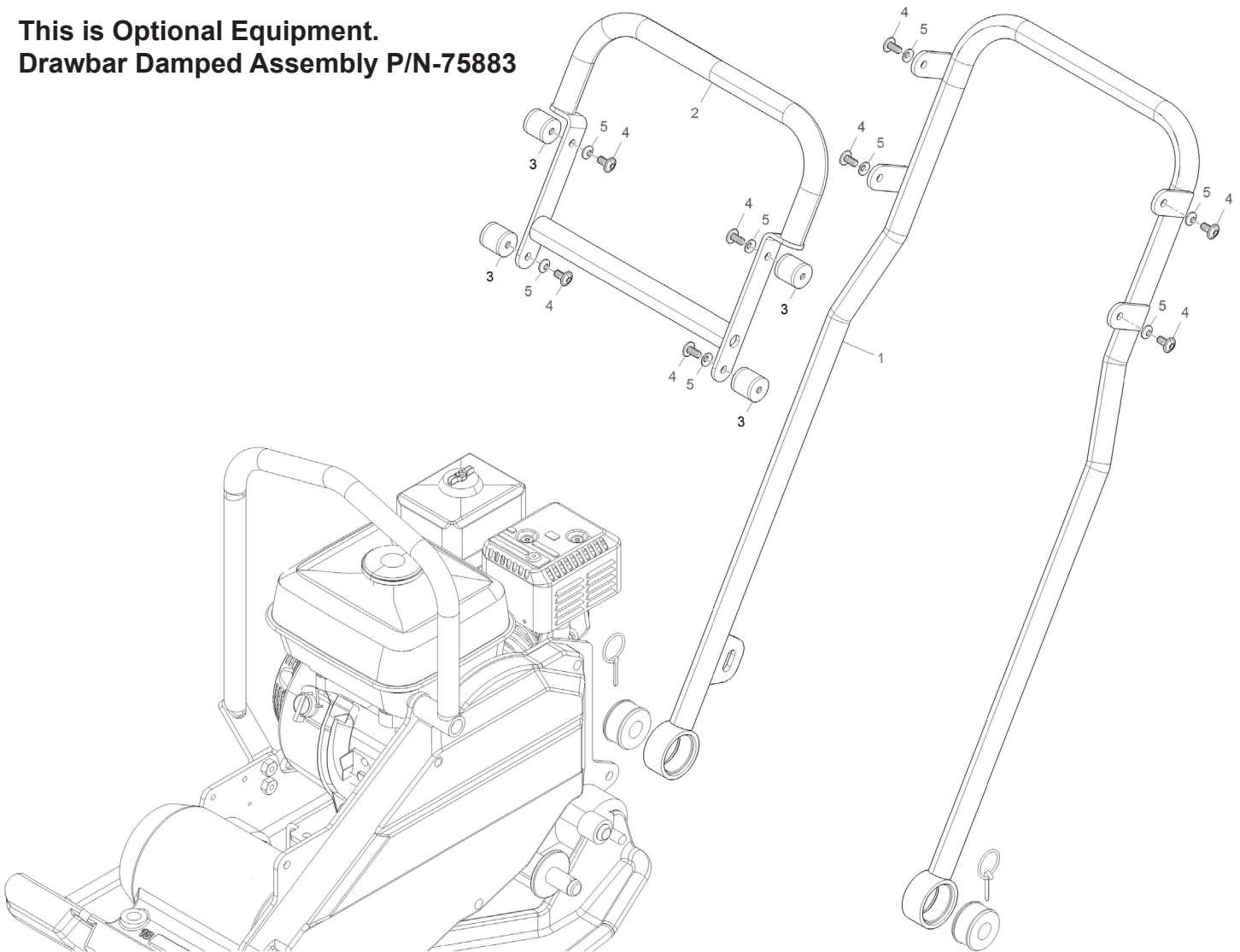
105

Item #	Part #	Qty	Description
1	75617	1	Retaining ring
2	75603	1	Fixing disk
3	75586	2	Lining strap
4	75585	2	Centrifugal weight
5	75587	2	Tension spring
6	75618	1	Nave
7	75619	1	Fixing disk
8	75620	2	Supporting disk

Item #	Part #	Qty	Description
9	75611	2	Nilos-ring
10	75621	1	Retaining ring
11	75397	1	Groove ball bearing
12	75622	1	Housing
13	75610	1	Disk
14	75498	1	Safety ring

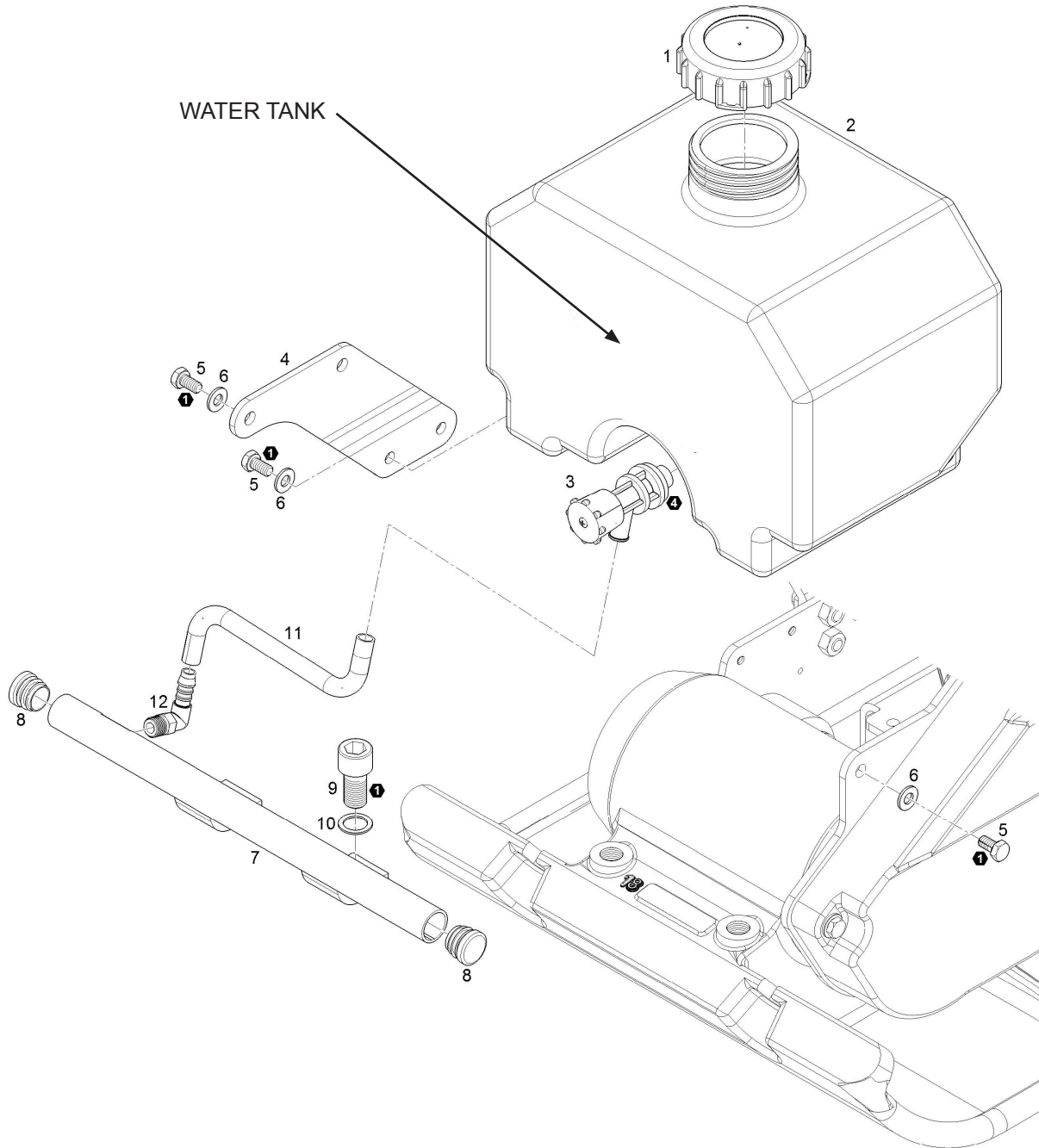
SFP 1850 PARTS

This is Optional Equipment.
Drawbar Damped Assembly P/N-75883



Item #	Part #	Qty	Description
1	75175	1	Drawbar, lower part
2	75148	1	Drawbar, upper part
3	75469	4	Rubber buffer
4	75776	8	Socket Button Head Screw
5	75531	8	Conical spring washer
6	75883	1	Drawbar damped, assy. Includes items 1 thru 5.

SFP 1850 PARTS

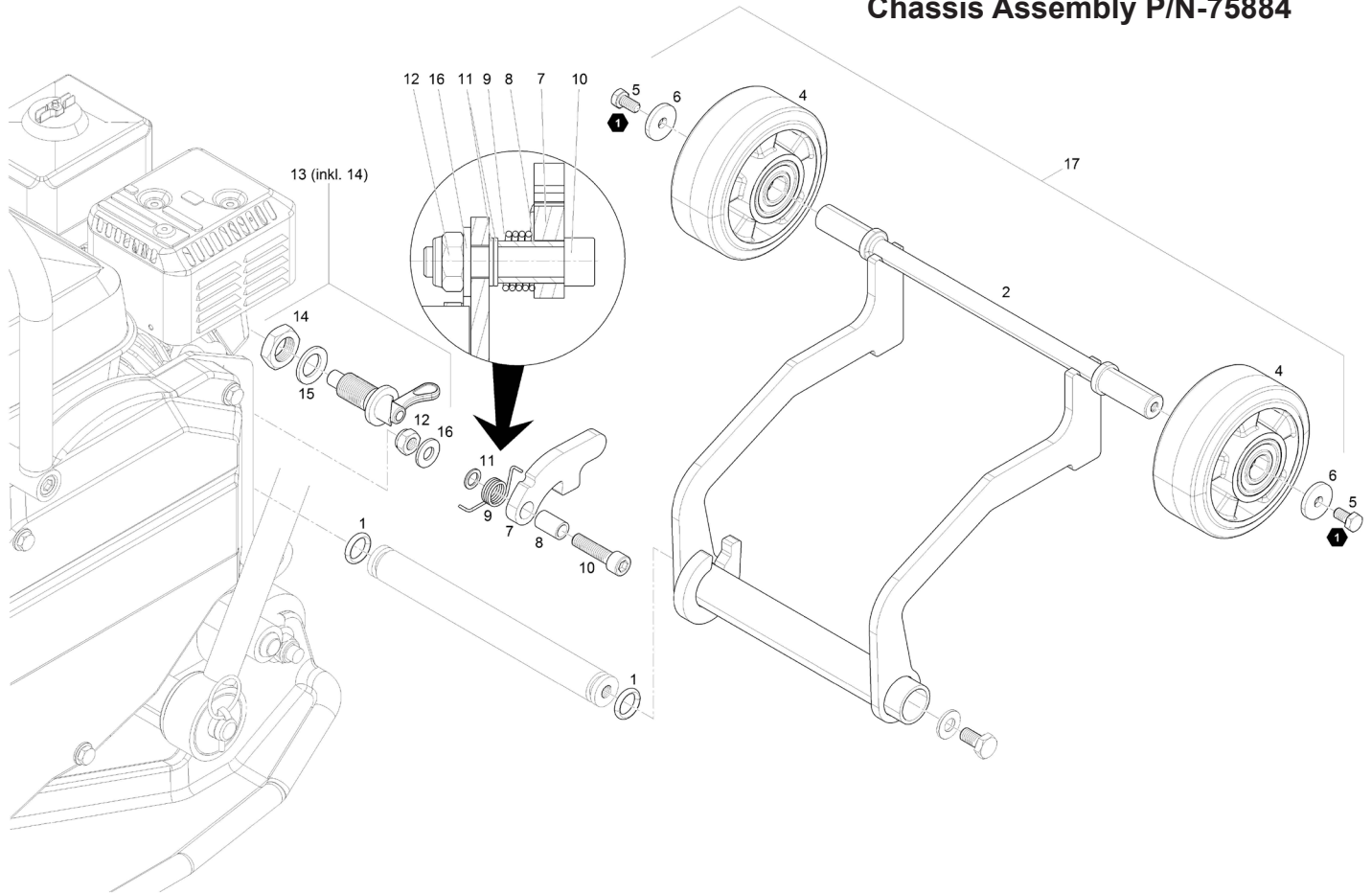


Item #	Part #	Qty	Description
1	75653	1	Cover Lid
2	75179	1	Water Tank
3	75647	1	Drain Cock
4	75180	1	Sheet Plate
5	75725	6	Cap Screw M8x16
6	75531	6	Conical Spring Washer

Item #	Part #	Qty	Description
7	75181	1	Sprinkling Pipe
8	75655	2	Closing Plug
9	75693	2	Cap Screw M16x30
10	75525	2	Lock Washer
11	75384	1	Hose
12	75560	1	Male Stud Elbow

SFP 1850 PARTS

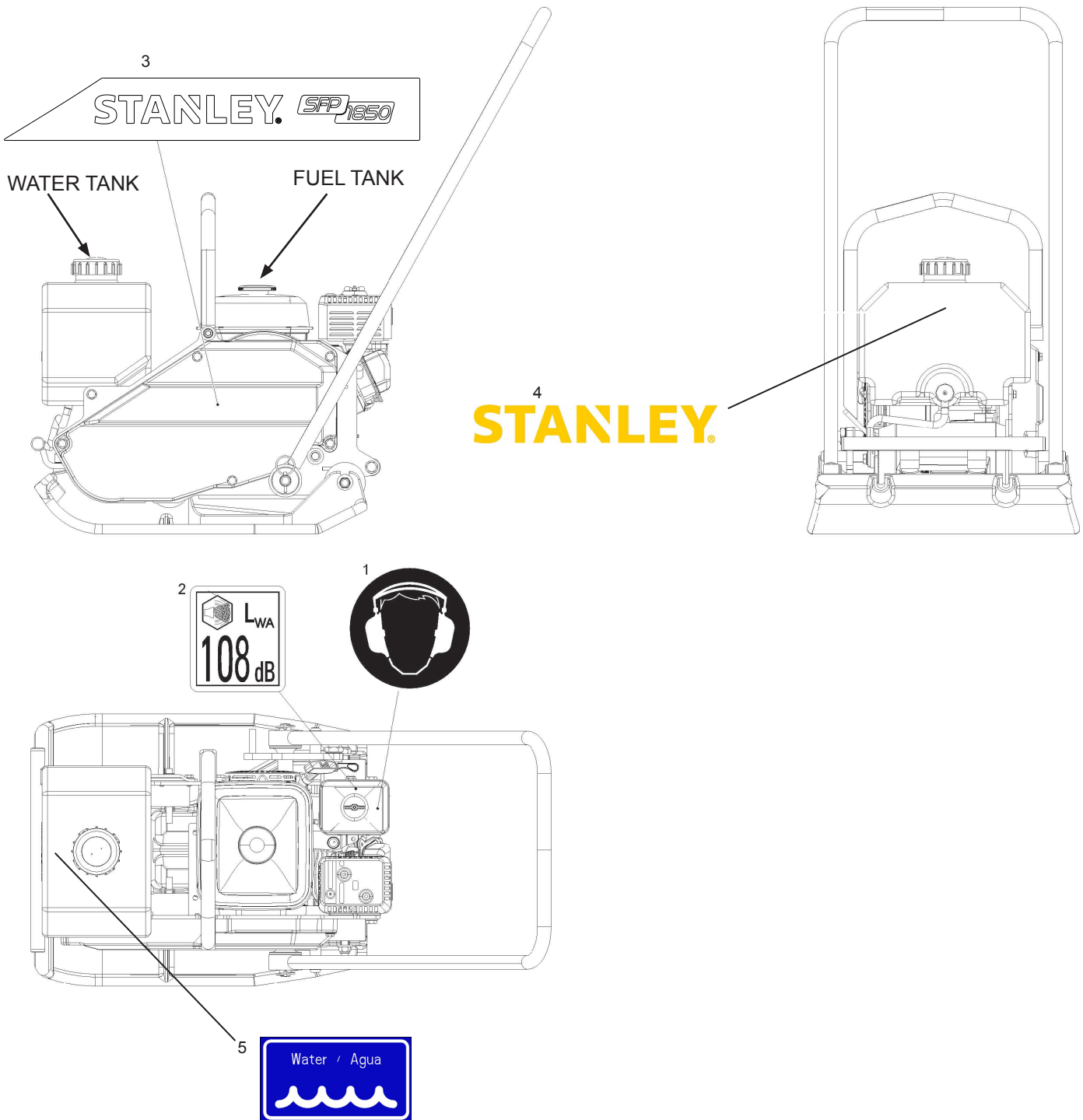
This is Optional Equipment.
Chassis Assembly P/N-75884



Item #	Part #	Qty	Description
1	75421	2	O-Ring
2	75183	1	Chassis
4	75635	2	Wheel
5	75725	2	Cap Screw M8x16
6	75316	2	Washer
7	75161	1	Hook
8	75163	1	Bush
9	75162	1	Torsion Spring

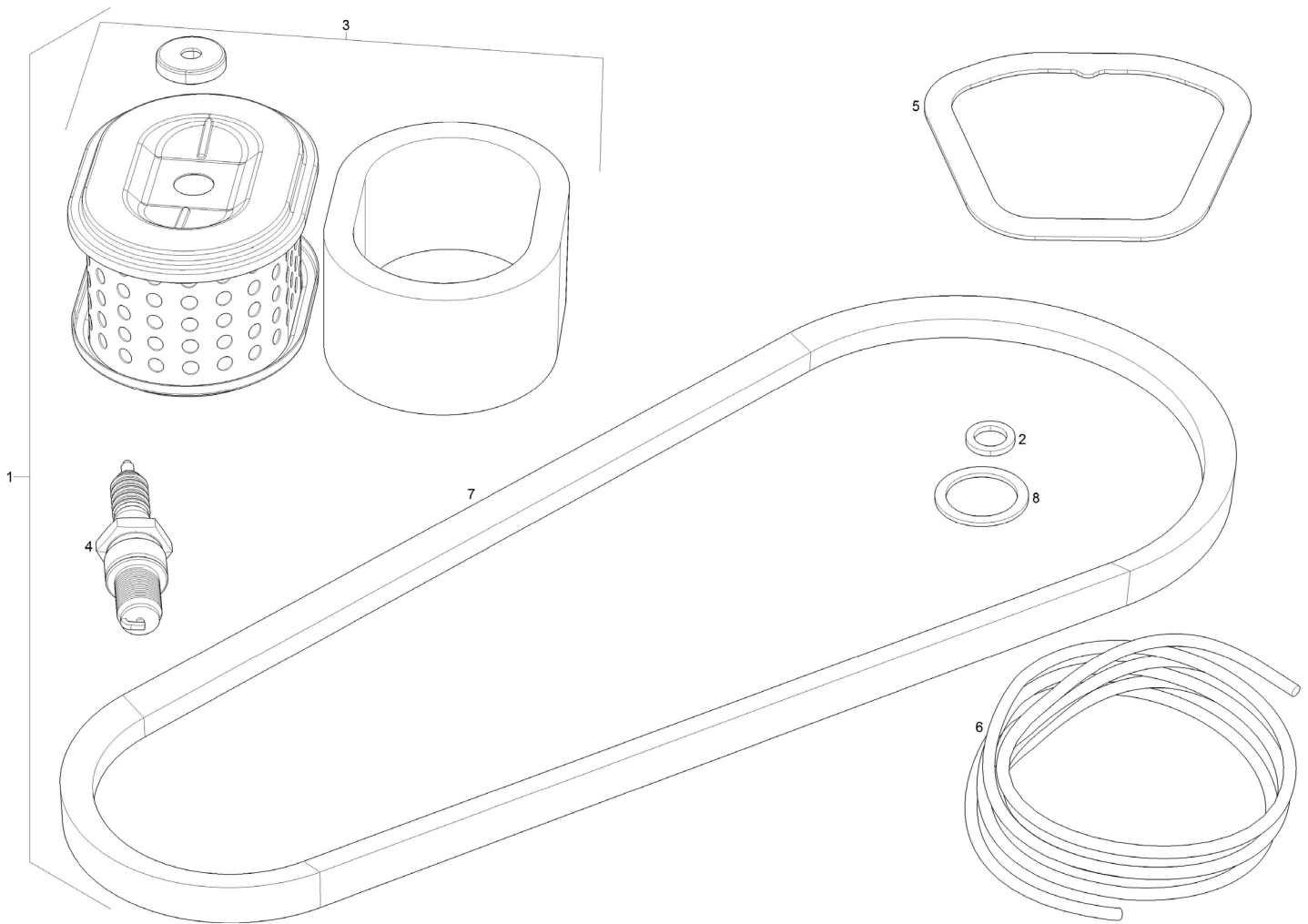
Item #	Part #	Qty	Description
10	75689	1	Cap Screw M10x45
11	75522	2	Lock Washer
12	75754	1	Hexagon Nut M10
13	75639	1	Locking Bolt (Incl item 14)
14	75750	1	Hexagon Nut
15	75526	1	Lock Washer
16	75530	1	Conical spring washer
17	75884	1	Chassis, assy. Includes items 1 thru 16.

SFP 1850 DECALS



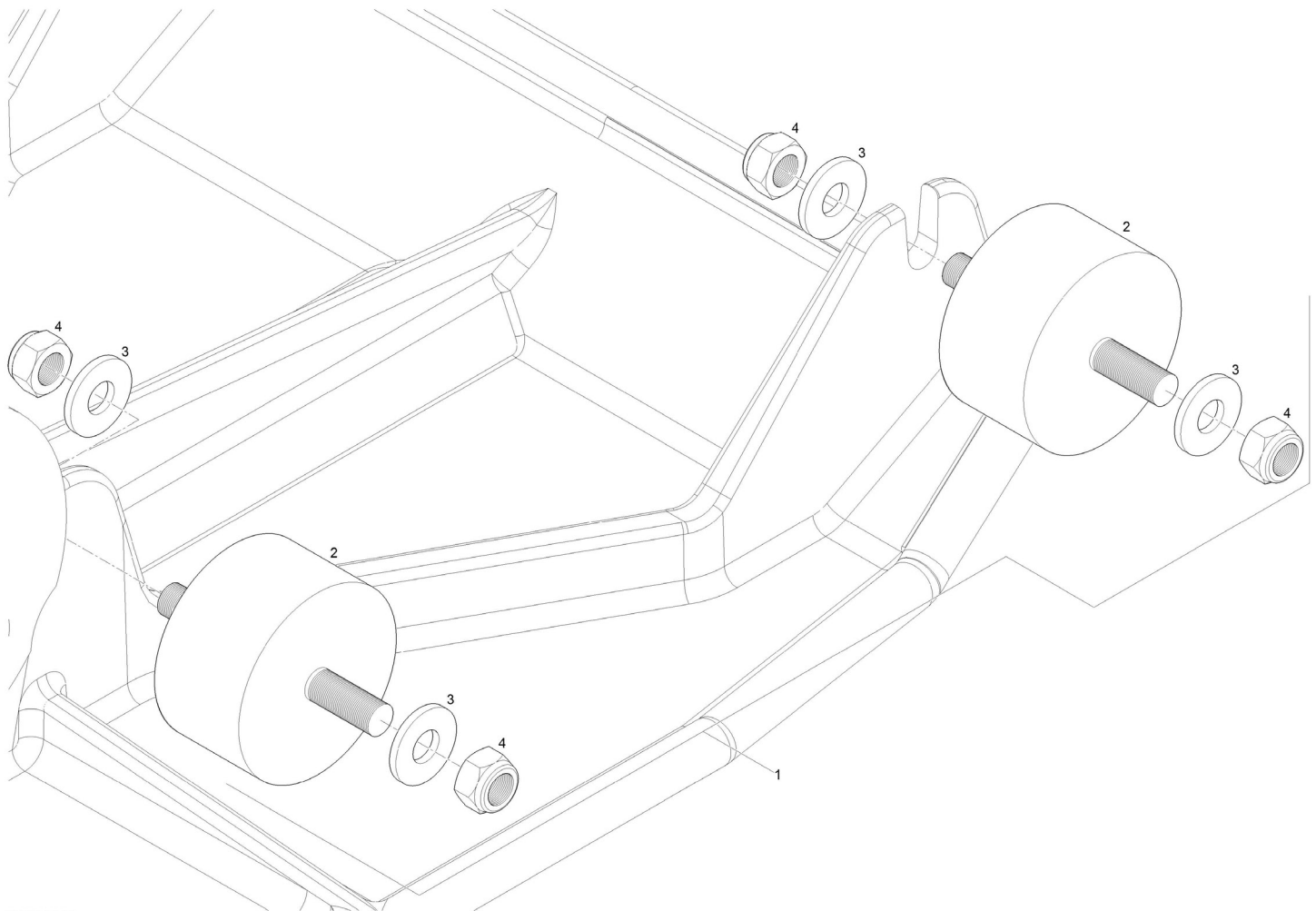
Item #	Part #	Qty	Description
1	75103	1	Hearing Protection
2	75099	1	Sound level decal
3	74904	1	Decal SFP 1850
4	74920	1	Stanley Logo
5	76495	1	Water Tank Decal

SFP 1850 MAINTENANCE KIT



Item #	Part #	Qty	Description
1	75803	1	Maintenance Kit
2	75871	1	Washer
3	75574	1	Air Filter
4	75877	1	Spark Plug
5	75860	1	Valve Cover Gasket
6	75869	1	Starter Rope
7	75461	1	V-Belt
8	75456	1	Joint Washer

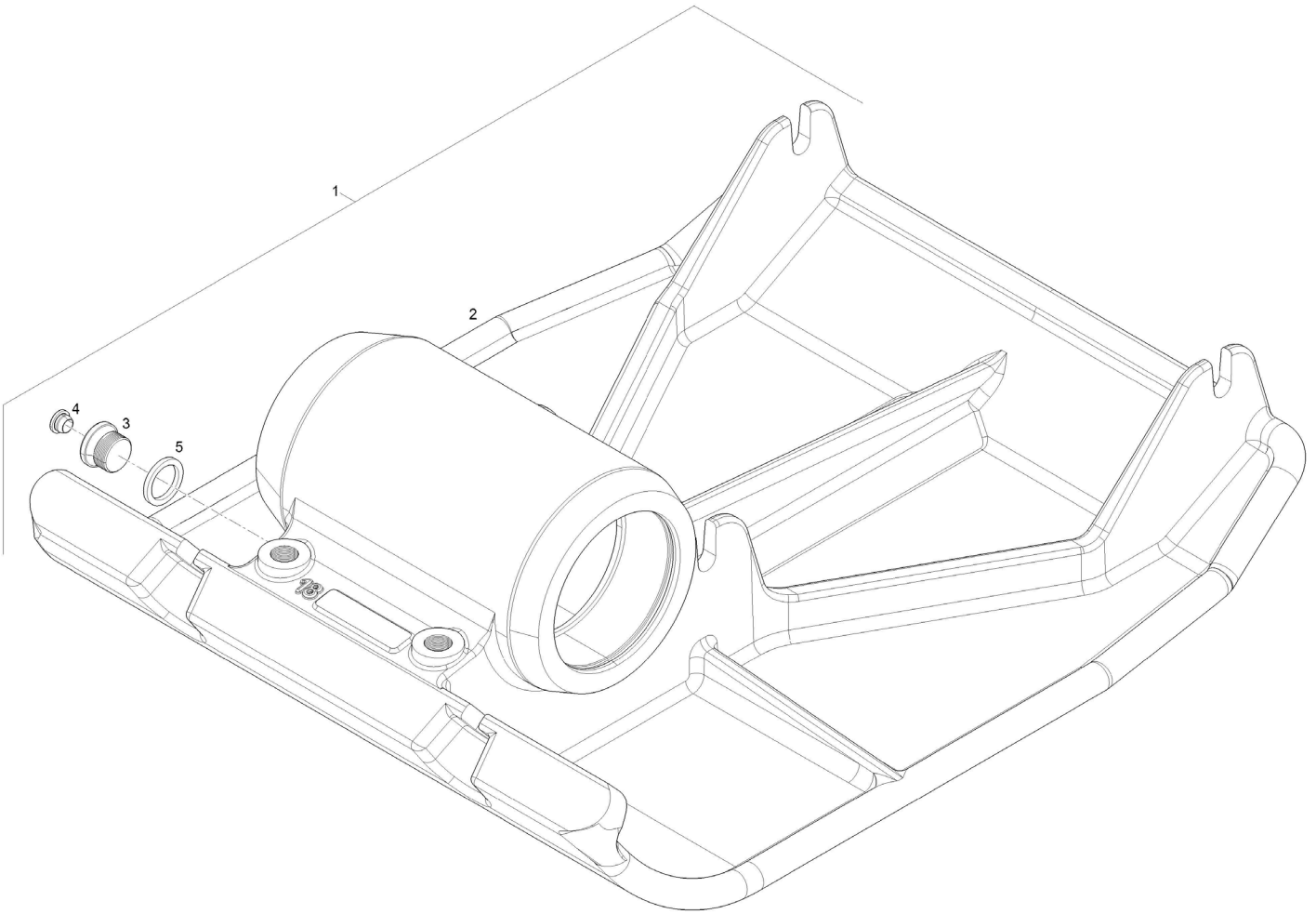
SFP 1850 WEAR PARTS KIT, SPRING ELEMENT



E1708022

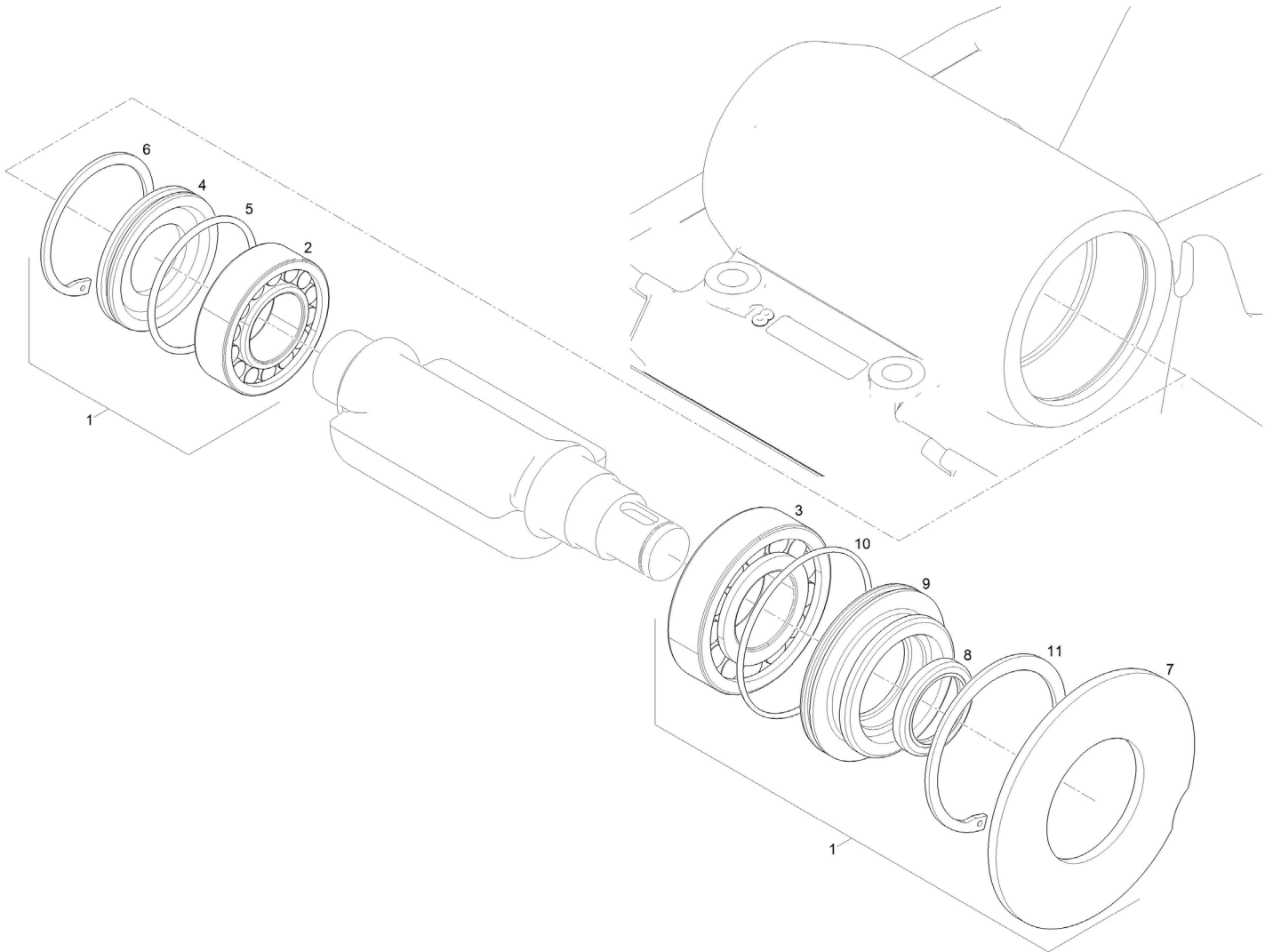
Item #	Part #	Qty	Description
1	75841	1	Wear Parts Kit Spring Element
2	75390	4	Rubber Buffer
3	75528	8	Conical Spring Washer
4	75755	8	Hexagon Nut

SFP 1850 WEAR PARTS KIT, BASE PLATE



Item #	Part #	Qty	Description
1	75842	1	Wear Parts Kit Base Plate
2	75167	1	Base Plate
3	75671	1	Screw Plug
4	75651	1	Closing Plug
5	75456	1	Joint Washer

SFP 1850 REPAIR KIT EXCITER



Item #	Part #	Qty	Description
1	75797	1	Repair Kit Exciter
2	75406	1	Cylindrical Roller Bearing
3	75407	1	Cylindrical Roller Bearing
4	75104	1	Joint Disc
5	75429	1	O-Ring
6	75486	1	Retaining Ring
7	75120	1	Joint Disc
8	75417	1	Shaft Sealing Ring
9	75116	1	Sealing Flange
10	75440	1	O-Ring
11	75487	1	Retaining Ring

STANLEY®

Stanley Hydraulic Tools
3810 SE Naef Road
Milwaukie, Oregon 97267-5698 USA
(503) 659-5660 / Fax (503) 652-1780
www.stanleyhydraulics.com