

STANLEY®



SPL31 SPIKE PULLER

Stanley's® SPL31 Series Hydraulic Spike Puller provides the ultimate in spike removal for all railroad maintenance jobs. The automatic dual-stage valve greatly reduces spike kick-back to the operator. Spike extraction can be accomplished from any position making spike pulling simple and effortless.

SPL31 SPIKE PULLER

FEATURES AND BENEFITS

- The addition of a side carry handle improves the tool's ease of use and ergonomics
- Industry-leading pulling force of 16,647 lbs
- Composite hydraulic cylinder for maximum strength and reduced weight
- The handle has been redesigned to improve durability, ergonomics, and operator comfort. It offers a comfortable grip and precise alignment, providing a superior user experience
- New seal design extends life and service intervals
- Redesigned for improved durability and longer chute lifespan

SPECIFICATIONS

PULLING FORCE	16,647 LBS / 7550 KG
PRESSURE	2500 PSI / 172 BAR
MAXIMUM BACK PRESSURE	250 PSI / 17 BAR
FLOW RANGE	5-10 GPM / 19-38 LPM HTMA TYPE I - II, RR
PORTING	-8 SAE O-RING
COUPLERS	HTMA/EHTMA FLUSH FACE TYPE MALE AND FEMALE
CONNECT SIZE AND TYPE	3/8 MALE PIPE ADAPTER
WEIGHT*	36 LBS / 16.3 KG
OVERALL LENGTH	32.75 IN. / 83.1 CM
OVERALL HANDLE WIDTH	16.25 IN. / 41.2 CM
OVERALL HEIGHT	5.25 IN. / 13.3 CM
MAXIMUM FLUID TEMPERATURE	140° F / 60° C

* Without hose whips & couplers - with oil

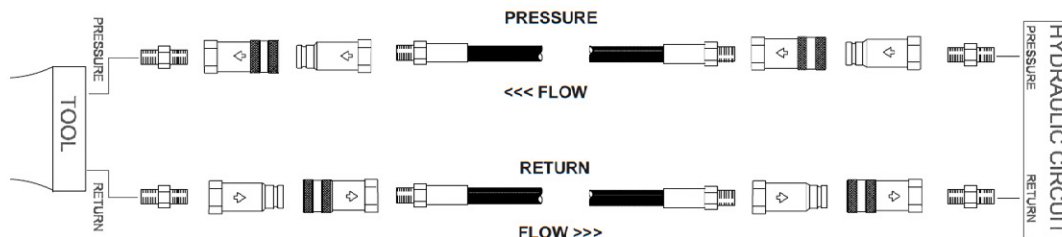
ORDER INFORMATION

MODEL NO.	DESCRIPTION
SPL31A	AUTO TWO STAGE, PARKER COUPLERS
SPL31AN	AUTO TWO STAGE, AEROQUIP COUPLERS
SPL31AS	AUTO TWO STAGE, PARKER COUPLERS, SAFETY TRIGGER

ACCESSORIES

PART NO.	DESCRIPTION
82791	GRIP JAW (QTY. 2 REQUIRED)
82792	"W" GRIP JAW CASTING (HAIR PIN - QTY. 2 REQUIRED)

TYPICAL HOSE CONNECTIONS



STANLEY

3810 SE Naef Road // Milwaukie, OR 97267 // 833-723-1843 // www.IndustrialToolsAndAttachments.com

2024.08.09