

# BR45 UNDERWATER BREAKER/DRIVER

# STANLEY



## SPECIFICATIONS

<b>Performance</b>	1525 bpm @ 8 gpm
<b>Steel Capacity</b>	1" x 4 1/4" Hex
<b>Handle Type</b>	T-Handle
<b>Circuit Type</b>	Open Center
<b>Flow Range</b>	7-9 gpm / 26-34 lpm
<b>Optimum Flow</b>	8 gpm / 30 lpm
<b>Working Pressure</b>	1500-2000 psi / 105-140 bar
<b>Full Relief Setting</b>	2250 psi / 155 bar
<b>Weight (less tool bit)</b>	43 lbs / 19.5 kg
<b>Length</b>	25" / 63.4 cm
<b>Width (at handles)</b>	14" / 35 cm
<b>Hydraulic Ports</b>	-8 SAE O-ring
<b>Couplers</b>	No (See Accessories)
<b>Hose Whips</b>	Yes (3/8" NPT Male thread)

The **BR45** is a rugged, powerful and lightweight breaker in the 40-55 lb class used for light to medium concrete, rock and coral breaking and removal.

## FEATURES

- T-Handle with large on/off trigger for precise control
- Stainless Steel spool and fasteners
- Trouble free diaphragm accumulator provides additional blow energy and reduces recoil
- Feathering on/off valve allows easy initial tool bit placement
- Uses standard 1" x 4 1/4" hex shank tool bits
- Four tie rod design for durability
- Operates in any position
- Modular design for ease of service
- Latch retainer



The **BR45** is the smallest breaker in the Stanley Hydraulic Tool lineup of underwater breakers. The feathering on/off valve controls speed and allows easier initial tool placement. Standard 1" hex chuck and latch retainer. Painted hi-visibility yellow.

# BR45 UNDERWATER BREAKER/DRIVER

# STANLEY®

## ORDERING INFORMATION

### PART NUMBER

**BR45350** Paving Breaker, Underwater, 1" Hex, less couplers

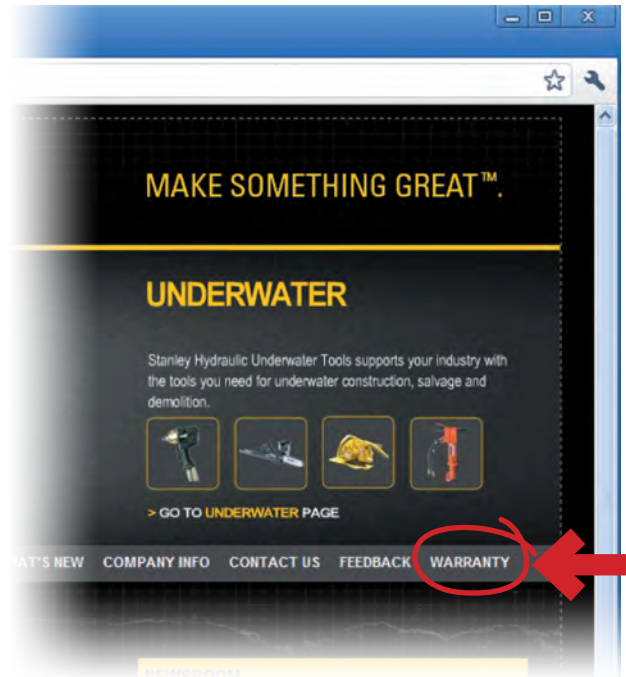
### ACCESSORIES

- |              |  |
|--------------|--|
| <b>03971</b> | Flush-Face Coupling Set, 3/8" NPT        |
| <b>03974</b> | Flush-Face Coupling Set, 1/2" NPT        |
| <b>31848</b> | Dual Hose, 50' x 1/2", with couplers     |
| <b>31972</b> | Dual Hose, 25' x 1/2", with couplers     |
| <b>58633</b> | Twinned Hose, 25' x 1/2", with couplers  |
| <b>58634</b> | Twinned Hose, 50' x 1/2", with couplers  |
| <b>07702</b> | Moil Point, 1" Hex, 14" under collar     |
| <b>07703</b> | Narrow Chisel, 1" Hex, 14" under collar  |
| <b>07704</b> | 3" Wide Chisel, 1" Hex, 14" under collar |
| <b>07705</b> | Clay Spade, 1" Hex, 5 1/2" Wide Blade    |
| <b>07706</b> | Asphalt Wedge, 1" Hex, 3" Wide Blade     |

When hydraulic hose exceeds 100' (30.4 m) in length, increase I.D. of both pressure and return hose. For more information, consult Stanley Hydraulic Tools.

### IMPORTANT

To fill out a Product Warranty Recording form and for information on your warranty visit [stanleyhydraulic.com](http://stanleyhydraulic.com) and select the Warranty tab.



**Note:** The warranty recording form must be submitted to validate the warranty.

All Stanley Hydraulic Tools, parts, accessories and allied equipment are subject to design improvements, specifications and price changes at any time without notice and with no obligation to units already sold. Weights, dimensions and operating specifications listed herein are subject to change without notice. Where specifications are critical to your applications, please consult Stanley Hydraulic Tools.