



**SPECIFICATIONS**

Model	(1) Excavator Weight 2nd Member		(1) Excavator Weight 3rd Member		Skid Steer Weight		(2) Attachment Weight		Jaw Opening		Jaw Depth		(3) Reach	
	Lbs.	M Tons	Lbs.	M Tons	Lbs.	M Tons	Lbs.	Kg.	in.	mm	in.	mm	ft.	M
MSD 7R	7,500	3.4	15,000	7	6,500	3	1,100	500	10	254	11	280	5'0"	1.5

(1) Excavator and skid steer weight recommendation is based on standard, published weights and boom and/or arm lengths. All applications must be approved by Stanley LaBounty prior to sale.

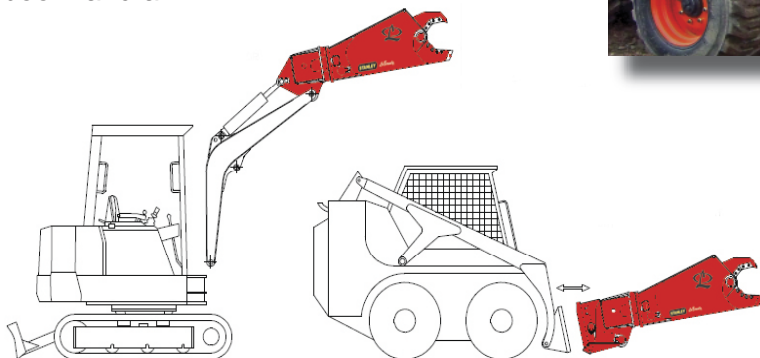
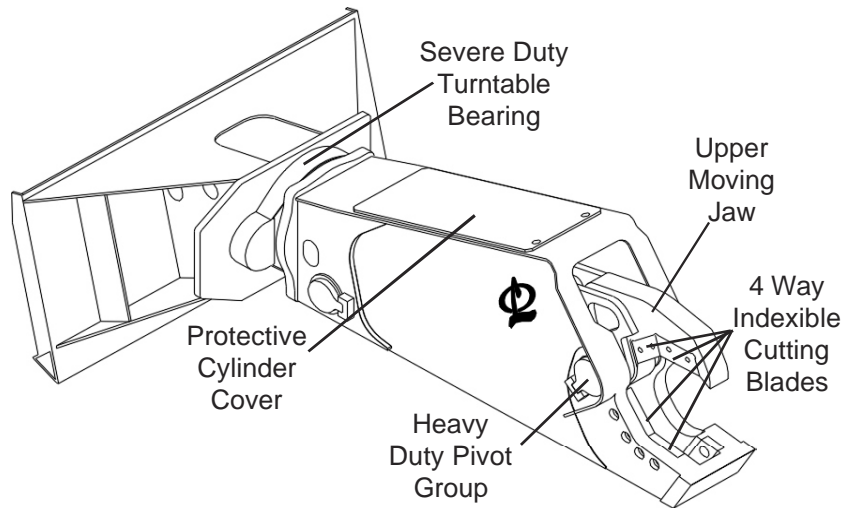
(2) Attachment weights can vary +/- 5% , depending upon mounting bracket configuration.

(3) Reach figures indicate the typical distance from the boom /arm tip of the base machine to the tip of the shear. Actual reach will vary depending upon the excavator boom/arm combination. Where reach is critical to a particular application, please contact Stanley LaBounty.

**Stanley LaBounty MSD 7R Mobile Shears** are ideal for cutting ferrous scrap, non-ferrous scrap and concrete in both scrap processing facilities and demolition sites where maneuvering in tight areas is required. Ideally suited to both mini-excavators and skid steer loaders, this tool has proven itself to be extremely versatile.

**The MSD 7R** features 4 way indexible, bolt-on cutting blades, maximizing your wear part investment and making it easy to maintain. A large bore, heavy duty cylinder is designed specifically for this product to insure maximum cutting force and longevity. A 360°, continuous rotation, heavy duty bearing and motor allow precise placement of the jaws at any angle.

**Built to Last** - The upper and lower jaws are made from durable, high strength castings while the body is made from high strength plate steel. The hydraulic cylinder is designed for heavy, continuous duty. The rotation bearing and motor are designed to withstand the full force of the machine's boom and arm.



MSD 7R mounted to Mini Excavator as 2nd Member

MSD 7R mounted to Skid Steer as 2nd Member

## MSD 7R ACCESSORIES AND WEAR PARTS

- 4 Way indexible cutting blades
- Weld-in replaceable piercing tip
- Shear installed selector valve to supply oil for rotation (eliminates need for 2nd additional circuit)
- Mini Excavator / Skid Steer adapter bracket

### Appetite Guide

The appetite data in the chart below are typical. Please call Stanley LaBounty for any other appetite or application questions.

I-Beam		Plate		Solid Round		Pipe		Concrete	
in.	mm	in.	mm	in.	mm	in.	mm	in.	mm
7"	178	.25	7	1.25	32	5	127	8	203

### Hydraulic Requirements

Stanley LaBounty offers two cylinder sizes to optimize the the performance of the MSD 7R Mobile Shear. Recommended pressure and flow ranges are as follows:

Function	Pressure	Flow
OPEN & CLOSE	3601-4350 PSI (248-300 Bar)	13-22 GPM (49-83 LPM)
	3001-3600 PSI (207-248 Bar)	14-24 GPM (53-91 LPM)
	2000-3000 PSI (138-207 Bar)	17-29 GPM (64-110 LPM)
ROTATION	1350-2000 PSI (92-138 Bar)	4-6 GPM (15-22 LPM)

For Skid Steer mounting, typically the rear auxilliary hydraulic circuit is used to operate the open and close function of the jaws (Full base machine pressure and flow). An optional selector valve can be ordered from Stanley LaBounty to supply oil to the shear's rotator (lower flow, lower pressure). For mini-excavator mounting or rubber-tire backhoe loaders, please consult Stanley LaBounty for proper hydraulic recommendations.

### Safety First!

Whichever type of base machine is used for operating the shear, it must be equipped with OEM (Original Equipment Manufacturer) approved cab guarding. This could include a reinforced, steel cage and polycarbonate shield (FOPS Guard-see fig. 1). Please contact your OEM or Authorized Dealer for more information. For other safety information, please thoroughly review the Safety, Operations and Maintenance Manual provided with the shear.

### Warranty

The MSD 7R Mobile Shears carry a 12 month or 1500 hour warranty against defects in material and workmanship. Stanley LaBounty reserves the right to repair or replace only those parts that prove to have been defective at the time of purchase. Ask your Stanley LaBounty dealer to explain this warranty in detail.

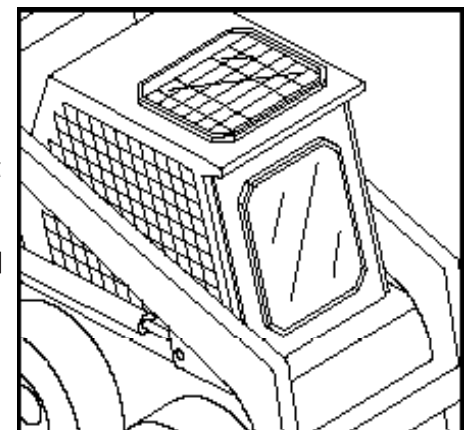


Fig. 1 - Skid Steer cab guarding showing polycarbonate shield on both top and front.

### Stanley LaBounty

1538 Highway 2  
 Two Harbors, MN 55616 USA  
 Tel: 218-834-2123 or 1-800-522-5059  
 E-Mail: labounty@stanleyworks.com  
 www.stanley-hydraulic-tools.com

