



**CUT, CRUSH, SLICE,
RIP, TEAR, DEMOLISH,
PIERCE, PULVERIZE,
GRAB, DISMANTLE**

YOUR WAY THROUGH THE DAY.

LABOUNTY HYDRAULIC ATTACHMENTS

	CATEGORY	HYDRAULIC POWER TOOLS		
	YEAR	13-14	FORMAT	PRODUCT CATALOG
	STANLEY 			

INDEX

MSD Saber / Saber Lube Series Shears	4–5
MSD 7R Mobile Shear	6
BLS Bucket Linkage Shears/MWS Wood Shears	7
MDP Mobile Demolition Processors	8
CP Concrete Pulverizers	9
UPsv Universal Processors	10–11
HDR Heavy Duty Grapples	12–13
TW Trash / Waste Grapples	14
RDG Rotating Demolition Grapples	15
RGS Rotating / Scrap Grapples	16
OPG Orange Peel Grapples	17
Offshore Products	18
<hr/>	
Accessories	19–20
Reconditioning/Custom Attachments	21
Stanley Hydraulic Tools	22



The Original. The Best. Period.

Material handlers and processors around the world know LaBounty Attachments as the industry leader in customer-driven product design, engineering innovation and service quality.

Since 1973, LaBounty has provided attachment solutions for general contractors, scrap metal recyclers, demolition experts, heavy construction engineers and bridge contractors. LaBounty Attachments represent the world's finest in attachment technology, innovation and performance.

STANLEY





The Test of Time...leading the industry with over 40 years experience, the LaBounty name continues to stand for the utmost in quality, durability and lasting performance. LaBounty attachments – many as old as the company itself – continue to work construction, demolition and scrap recycling job sites throughout the world, providing the much-coveted and perpetually sought industry standard.

With over 100,000 square feet of manufacturing space, using the latest technologies in machine tools, welding equipment, custom testing equipment, computer software and the best employees the industry has to offer, you can see our dedication to quality yourself. We invite all current and prospective customers to visit our facility in Two Harbors, MN. Tours can be arranged throughout the year during normal business hours (M–F: 8am–5pm CST).

STANLEY

LaBounty

MSD MOBILE SHEARS

THE PATENTED* MSD SABER LUBE SERIES FEATURES:

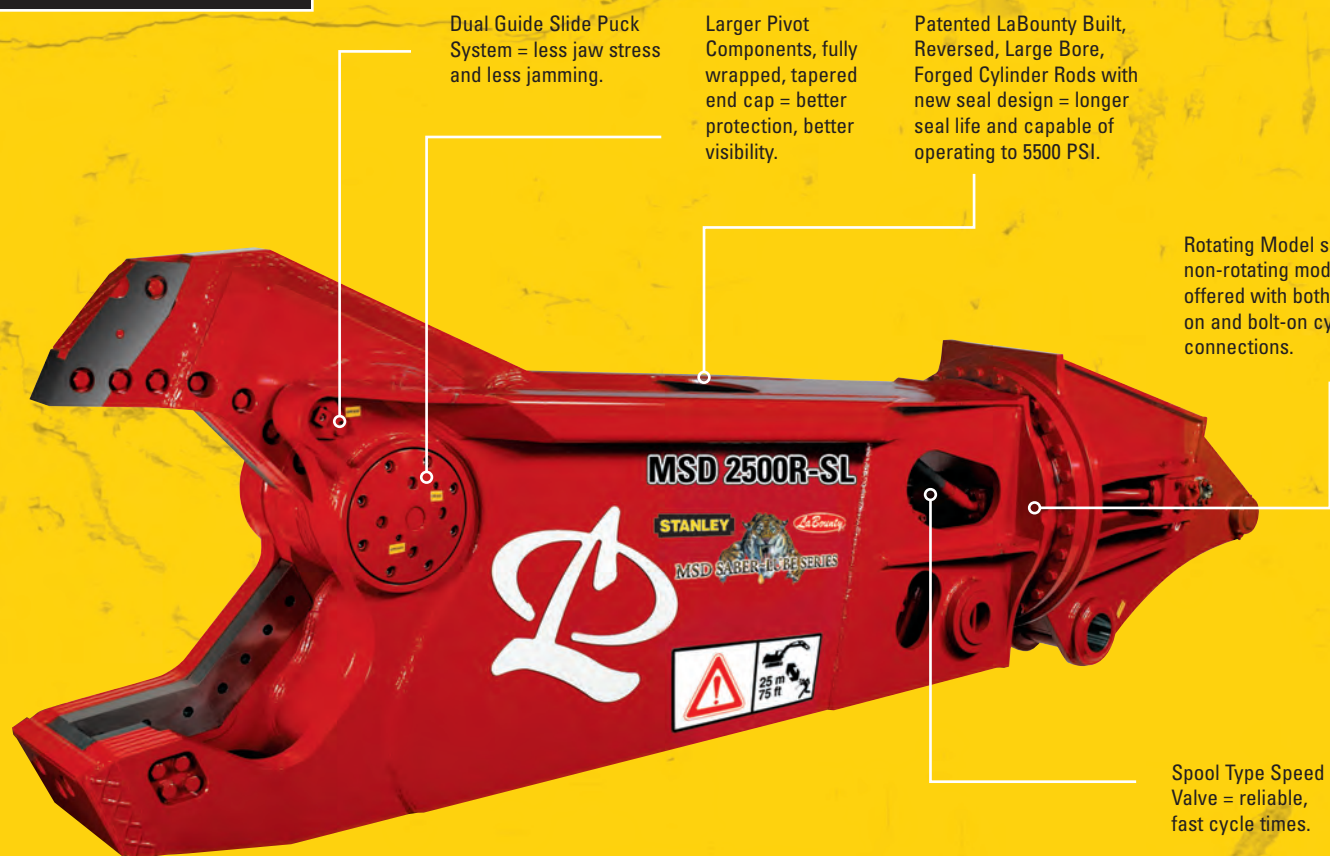


- Longer blade life.
- Reduces weld build-up maintenance.
- Less jamming of materials between the blades.

- Smoother operation and reduced noise. The overall cutting process is smoother, reducing shock loading in the cylinder and other hydraulic components.
- More usable power, lubricated blades reduce friction increasing the cutting tonnage of the shear by up to 10%.

The overall result is less wear and tear, less maintenance, more uptime yielding more production.

MSD MOBILE SHEARS



Dual Guide Slide Puck System = less jaw stress and less jamming.

Larger Pivot Components, fully wrapped, tapered end cap = better protection, better visibility.

Patented LaBounty Built, Reversed, Large Bore, Forged Cylinder Rods with new seal design = longer seal life and capable of operating to 5500 PSI.

Rotating Model shown – non-rotating models offered with both weld-on and bolt-on cylinder connections.

Spool Type Speed Valve = reliable, fast cycle times.

Patented, Reversible Saber Tip™ = less maintenance, more uptime, less operating cost



Patented wrap-around blade system = safer and easier maintenance



View showing pump components (bottom of shear) and sequencing valve (upper jaw).

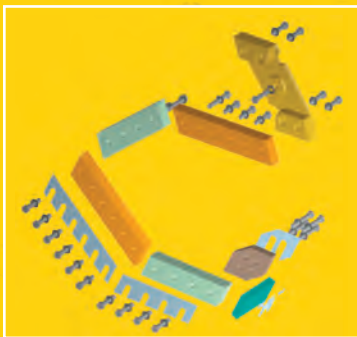


Lubricant is expelled to the various areas of the shear. The blades are drilled and grooved to maximize lube dispersion.

* These products protected by US Patent #'s 5,992,023; 7,240,869; 7,322,273, 7,487,930, 7,578,461, 7,832,130 and 8,146,256. Other US and Foreign patents pending or granted.



MSD MOBILE SHEARS



Complete Blade and Saber Tip™ Kits are available for all **MSD Saber Series Models**. Call LaBounty at 800-522-5059 or your Dealer for more information?

Peak Performance at any size LaBounty attachments are fitted to both the base machine requirements and your specific application needs. We fit attachments on the widest range of carriers from mini-excavators weighing 3,000 lbs., to mammoth excavators in excess of 400,000 lbs.

We work closely with excavator manufacturers to guarantee ease of mounting and operation. This comprehensive attention to application ensures maximum performance for every LaBounty attachment in every situation.

MSD SABER AND SABER LUBE SPECIFICATIONS

Model	Excavator Weight 2nd Member		Excavator Weight 3rd Member		MSD Weight		Jaw Opening		Jaw Depth		Reach	
	Lbs.	m Tons	Lbs.	m Tons	Lbs.	Kg.	in.	mm	in.	mm	ft.	m
MSD 1000	20,000	9	35,000	16	4,200	1,900	19	480	20	510	5'11"	1.8
MSD 1000R	23,000	10	40,000	18	4,400	2,000	19	480	20	510	8'6"	2.5
MSD 1500	27,000	12	55,000	25	6,600	3,000	22	560	25	640	6'9"	2.1
MSD 1500R	40,000	18	66,000	30	7,000	3,200	22	560	25	640	9'3"	2.8
MSD 2000	42,000	19	70,000	32	8,850	4,000	28	710	29	740	8'3"	2.5
MSD 2000R	50,000	23	90,000	41	10,200	4,600	28	710	29	740	11'0"	3.4
MSD 2000-SL	42,000	19	70,000	32	9,050	4,100	28	710	29	740	8'3"	2.5
MSD 2000R-SL	50,000	23	90,000	41	10,400	4,700	28	710	29	740	11'8"	3.5
MSD 2500	50,000	23	90,000	41	12,000	5,400	32	810	34	860	8'9"	2.7
MSD 2500R	70,000	32	110,000	50	14,600	6,600	32	810	34	860	12'6"	3.8
MSD 2500-SL	50,000	23	90,000	41	12,000	5,400	32	810	34	860	8'9"	2.7
MSD 2500R-SL	70,000	32	110,000	50	14,800	6,700	32	810	34	860	12'6"	3.8
MSD 3000	70,000	32	144,000	65	13,300	6,000	35	890	38	970	9'10"	3.0
MSD 3000R	95,000	43	160,000	73	17,000	7,700	35	890	38	970	14'1"	4.3
MSD 3000-SL	70,000	32	144,000	65	13,500	6,100	35	890	38	970	9'10"	3.0
MSD 3000R-SL	95,000	43	160,000	73	17,200	7,800	35	890	38	970	14'1"	4.3
MSD 4000	80,000	36	150,000	68	16,600	7,500	40	1,000	44	1,100	12'0"	3.4
MSD 4000R	100,000	45	170,000	77	19,000	8,600	40	1,000	44	1,100	14'11"	4.5
MSD 4500	90,000	41	160,000	73	17,900	8,100	38.5	980	43	1,090	10'8"	3.3
MSD 4500R	110,000	50	185,000	84	21,000	9,600	38.5	980	43	1,090	14'2"	4.3
MSD 4500-SL	90,000	41	160,000	73	18,100	8,200	38.5	980	43	1,090	10'8"	3.3
MSD 4500R-SL	110,000	50	185,000	84	21,200	9,600	38.5	980	43	1,090	14'2"	4.3
MSD 7500	135,000	61	consult factory		25,500	11,600	43	1,090	45	1,140	11'10"	3.6
MSD 7500R	160,000	73	275,000	125	30,000	13,600	43	1,090	45	1,140	15'7"	4.7
MSD 7500-SL	135,000	61	consult factory		25,700	11,700	43	1,090	45	1,140	11'10"	3.6
MSD 7500R-SL	160,000	73	275,000	125	30,200	13,700	43	1,090	45	1,140	15'7"	4.7
MSD 9500	175,000	80	consult factory		37,300	16,900	48	1,220	52	1,320	15'4"	4.6
MSD 9500R	275,000	125	consult factory		43,300	19,700	48	1,220	52	1,320	18'4"	5.6
MSD 9500-SL	175,000	80	consult factory		37,500	17,000	48	1,220	52	1,320	15'4"	4.6
MSD 9500R-SL	275,000	125	consult factory		44,500	20,200	48	1,220	52	1,320	18'4"	5.6

STANLEY

LaBounty

SHEARS

MOBILE SHEARS

MODEL MSD 7R

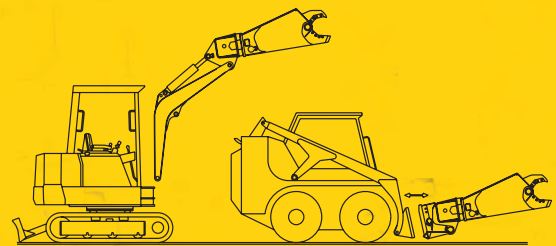


COMPACT BUT FEROCIOUS



The MSD 7R Mobile Shear is compact, yet powerful, specifically designed for mini to small excavators and skid steer loaders. This shear is excellent for applications where using larger equipment is not possible or practical such as interior demolition work or use in small ferrous and non-ferrous scrap yards. It can cut a variety of materials including H and I beams, angle, channel, wire, plate, pipe, rebar, tires, concrete and more.

- The MSD 7R features easily replaceable wear parts including four-way indexable blades
- Features 360° continuous rotation using a severe-duty bearing.



	Excavator Weight 2nd Member lbs / m tons	Excavator Weight 3rd Member lbs / m tons	MSD Weight lbs / kg	Shear Opening in / mm
MSD 7R	7,500 / 3	15,000 / 7	1,100 / 500	10 / 254

The most common application is the cutting of non-ferrous materials in a scrap yard. The MSD 7R replaces the manual cut-off saw increasing productivity and reducing hazards in the work environment.

The MSD 7R can be ordered with a stand alone excavator bracket or skid steer bracket. As an option, the shear can be ordered with the excavator bracket and then an additional adapter bracket to allow it to mount to both types of machines.



BUCKET LINKAGE SHEARS

MODEL BLS 2000/3000

MINIMAL INVESTMENT-MAXIMUM PRODUCTION

BLS Bucket Linkage Shears are designed for cutting light to medium sized material such as structural steel, pipe, rebar, tires and concrete. Ideal applications for BLS Shears include light scrap processing and demolition clean up.

- BLS Shears pin on in place of an excavator bucket, eliminating the need for additional hydraulics.
- BLS mounts may be configured to work on several excavator makes and models.

- Uses Patented, MSD Saber Series Shear blade system, including Saber Tip and cross blade for ease of maintenance.
- Tapped cutting blades for easy removal.
- Patented replaceable pivot upper jaw / removable main pin.
- Fully shrouded main pivot components.
- Multi Machine mounts which allow the tool to be mounted to several different base machines within the same class size.



	Excavator Wt. 3rd Member lbs/m tons	BLS Weight lbs/kg	Jaw Opening in/mm	Jaw Depth in/mm
BLS 2000	40-67,000 / 18-30	3,200 / 1,460	15-20 / 380-510	20 / 510
BLS 3000	68-100,000 / 31-45	4,800 / 2,180	17-22 / 430-560	23 / 580

WOOD SHEARS

MODEL MWS 40/80

MAXIMUM CUTTING FORCE

MWS Mobile Wood Shears are ideal for applications involving downsizing of wood materials including tree stumps, logs, railroad ties, wood demolition debris and other oversized wood products. MWS Shears excel in wood waste recycling and land clearing operations, removing dirt and rocks, resulting in less tub grinder maintenance and a cleaner by-product.

- MWS Shears feature weld-in replaceable, hardened steel cutting blades that easily split large stumps and oversized material.
- MWS Shears provide maximum cutting force and maximum reach with minimum weight, reducing base machine movement, increasing operator safety.
- MWS Shears pin on in place of an excavator bucket, eliminating the need for additional hydraulics.



	Excavator Wt. 3rd Member lbs/m tons	MWS Weight lbs/kg	Jaw Opening in/mm	Jaw Depth in/mm
MWS 40	40-60,000 / 18-27	3,000 / 1,360	30-40 / 762-1,020	29 / 740
MWS 80	70-95,000 / 32-43	5,100 / 2,310	50-60 / 1270-1,520	41 / 1,040

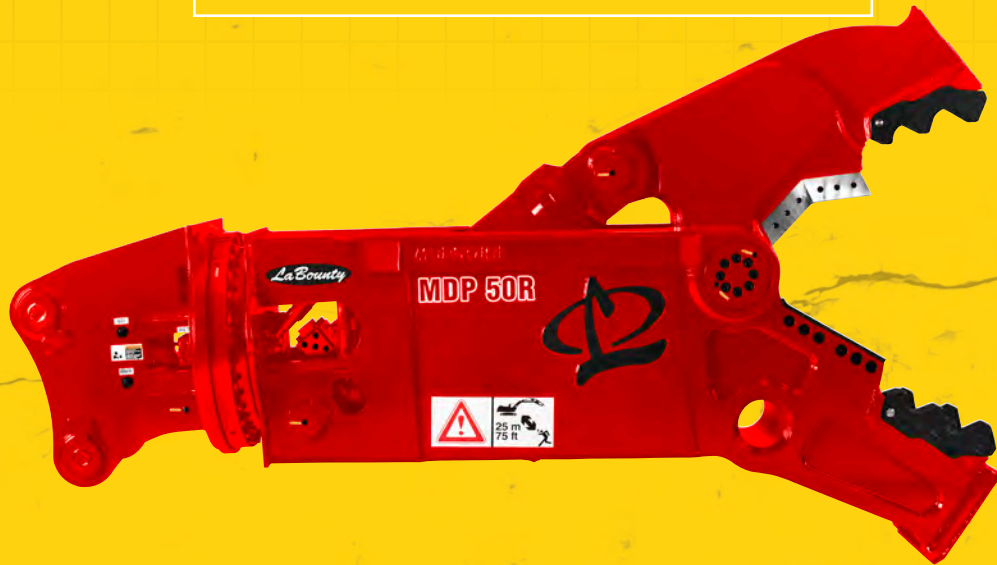
STANLEY

LaBounty

MOBILE DEMOLITION PROCESSORS

MOBILE DEMOLITION PROCESSOR

MDP 20R / MDP 27R / MDP 35R / MDP 50R



- Unmatched power-to-weight enables ease of processing harder concrete with smaller excavators
- Apexed jaw blades for material gathering and maximum cutting capabilities
- Interchangeable concrete cracking (CC) jaw and pulverizer (CP) jaw for versatility
- 360-degree powered rotation for maneuverability and ease of use
- Patented "Quick Change Pivot" for quicker jaw change
- SWIFT LOC teeth makes maintenance quick and easy
- Longer reach and working range for less excavator movement and more time processing

	Excavator Weight 3rd Member lbs/m tons	MDP Weight lbs/kg	Jaw Opening in/mm	Jaw Depth in/mm	Cycle Time	Reach ft/m	Cutting Force Apex tons/kN	Crushing Force Tip tons/kN
MDP 20R CC	40,000-65,000/18-30	4,600/ 2,058	25/630	27/680	7.0 sec	9'10"/3	230/2,050	105/935
MDP 20R CP	40,000-65,000/18-30	5,250/2,380	25/630	27/680	7.0 sec	9'10"/3	230/2,050	105/935
MDP 27R CC	55,000-80,000/25-36	6,300/2,850	32/820	31/787	7.5 sec	9'7"/2.9	288/2,570	116/1,035
MDP 27R CP	55,000-80,000/25-36	6,950/3,150	32/820	31/787	7.5 sec	9'7"/2.9	288/2,570	116/1,035
MDP 35R CC	70,000-110,000/32-50	8,150/3,700	38.5/980	36/920	9.3 sec	11'2"/3.4	350/3,115	150/1,335
MDP 35Rsv CC	70,000-110,000/32-50	8,250/3,740	38.5/980	36/920	6.2 sec	11'2"/3.4	350/3,115	150/1,335
MDP 35R CP	70,000-110,000/32-50	9,050/4,100	38.5/980	36/920	9.3 sec	11'2"/3.4	350/3,115	150/1,335
MDP 35Rsv CP	70,000-110,000/32-50	9,150/4,150	38.5/980	36/920	6.2 sec	11'2"/3.4	350/3,115	150/1,335
MDP 50R CC	100,000-140,000/45-65	12,300/5,575	49.5/1,260	45/1,150	11.3 sec	13'2"/4	430/3,825	185/1,650
MDP 50Rsv CC	100,000-140,000/45-65	12,400/5,625	49.5/1,260	45/1,150	7.2 sec	13'2"/4	430/3,825	185/1,650
MDP 50R CP	100,000-140,000/45-65	13,800/6,250	49.5/1,260	45/1,150	11.3 sec	13'2"/4	430/3,825	185/1,650
MDP 50Rsv CP	100,000-140,000/45-65	13,900/6,300	49.5/1,260	45/1,150	7.2 sec	13'2"/4	430/3,825	185/1,650

CONCRETE PULVERIZERS

CONCRETE PULVERIZER

CP



MAXIMUM CRUSHING POWER

Concrete Pulverizers are designed for quiet, controlled demolition and recycling of concrete bridge decks, walls, floor slabs, foundations, silos, culverts, pillars, encased beams, pre-cast structures, railings, etc. CPs excel in separating concrete from rebar, producing two recyclable products.

- CPs feature custom lever arms to provide maximum crushing power.
- CPs use existing excavator hydraulics – no additional circuits are required. A moveable front jaw, actuated by the excavator's bucket cylinder, closes into the stationary back jaw. The back jaw is pinned in place with a position arm which is pinned to a mounting pad welded on the lower surface of the excavator's stick.
- 100% welds around heavy torque tubes to minimize torsional stresses.
- Swift Lock Pin On Replaceable Tooth System. Standard on all CP models.

	Excavator Weight 3rd Member lbs/m tons	CP Weight lbs/kg	Jaw Opening in/mm	Jaw Depth in/mm
CP 40	36-46,000 / 16-21	2,875 / 1,300	30 / 760	25 / 640
CP 60	46-65,000 / 21-29	3,000 / 1,360	36 / 910	27 / 690
CP 80	65-88,000 / 29-40	4,475 / 2,030	42 / 1,070	29 / 740
CP 100	88-111,000 / 40-50	6,150 / 2,790	48 / 1,220	35 / 890
CP 120	111-160,000 / 50-73	9,900 / 4,490	54 / 1,370	40 / 1,020



SWIFT LOCK

REPLACEABLE TOOTH SYSTEM

Swift Lock teeth are standard equipment on most LaBounty Concrete Processing Tools. These exclusive, patented pin-on replaceable teeth allow end-users to change out teeth on attachments in the field in minutes. This system significantly reduces down-time otherwise necessary for routine build-up and hard surfacing.



Customer Service Excellence: LaBounty offers the most comprehensive, durable, powerful line of attachments in the world. We know that in order to support that reputation, attention to customer service is essential. We are proud to continue our commitment to providing solutions to our customers. Call your authorized LaBounty distributor, LaBounty representative or our Service Department for experienced,

STANLEY

LaBounty

UNIVERSAL PROCESSORS

UNIVERSAL PROCESSOR

UP SV



"Our company is a full service, demolition business...it's what we do everyday. We have used LaBounty Universal Processors for many years now. I have seen many other competitive attachments being used and have even tried some. The UP's were designed for us to use on an everyday basis in some of the worst conditions possible. They just flat out perform. I need tools I can rely on. That's why I stick with LaBounty."

– JEFF ELDER Vice President, Elder Demolition – Portland, Oregon

SWIFT LOCK

REPLACEABLE TOOTH SYSTEM

Swift Lock teeth are standard equipment on most LaBounty Concrete Processing Tools. These exclusive, patented pin-on replaceable teeth allow end-users to change out teeth on attachments in the field in minutes. This system significantly reduces down-time otherwise necessary for routine build-up and hard surfacing.



THE ULTIMATE DEMOLITION TOOL

The LaBounty Universal Processors SV series are ideal for demolition, road and bridge reconstruction and recycling operations. Up to 4 interchangeable jaws are offered per model, providing maximum versatility.

- 360° Powered Rotation – Allows for efficient processing at virtually any angle.
- Time Tested, Spool Type Speed Valve for fast cycle times.
- Two, large bore, reverse cylinders provide maximum power throughout the closing cycle, allow the jaws to align themselves on material better as compared to single cylinder attachments.
- Slotted, Grooved Pivot for much faster and easier jaw change out as compared to previous models.
- Reverse, shrouded cylinders – The cylinder barrel moves back and forth, keeping the cylinder rods away from the material. The heavy-duty shrouds provide added protection.
- Multiple Machine Mount Capability – Multi-machine head / lugs come standard with the UP SV series, allowing them to be mounted to other machines through the use of a pin and bushing kit (please call factory to verify mounting options).
- Swift Lock Tooth system is standard on most Concrete Pulverizer and Concrete Cracking Jaws.

	Excavator Wt 2nd member lbs/kg	Excavator Wt 3rd member lbs/kg	UP Weight w/ heaviest jaw set lbs/kg	Jaw Opening in/mm	Jaw Sets Available
UP 15sv	N/A	33,000 / 15	3,900 / 1,770	14 / 360 25 / 640	Shear Concrete Cracking
UP 20sv	22,000 / 10	44,000 / 20	5,050 / 2,040	18 / 460 24 / 610 29 / 740 11 / 280	Shear Concrete Pulverizer Concrete Cracking Plate Shear
UP 25sv	30,000 / 14	55,000 / 25	5,600 / 2,540	21 / 530 28 / 710 33 / 840 9 / 230	Shear Concrete Pulverizer Concrete Cracking Plate Shear
UP 30sv	44,000 / 20	66,000 / 30	8,180 / 3,720	25 / 640 32 / 810 41 / 1,040 14 / 360	Shear Concrete Pulverizer Concrete Cracking Plate Shear
UP 45sv	55,000 / 25	99,000 / 45	10,600 / 4,820	26 / 660 36 / 910 45 / 1,140 18 / 460	Shear Concrete Pulverizer Concrete Cracking Plate Shear
UP 75sv	80,000 / 30	135,000 / 61	12,900/5,860	33 / 840 40 / 1,020 49 / 1,250	Shear Concrete Pulverizer Concrete Cracking
UP 90	100,000 / 45	190,000 / 86	20,500/9,300	42 / 1,070 60 / 1,520 67 / 1,700	Shear Concrete Pulverizer Concrete Cracking

UNIVERSAL PROCESSORS

WITH UP TO FOUR JAW SETS TO CHOOSE FROM, PRODUCTION RATES SOAR...



CONCRETE CRACKING JAW

UP SV SERIES (CC)

Breaks large, oversized concrete (abutments, beams, etc.). Ideal for primary demolition applications. High grade, abrasion resistant steel used in entire jaw. Improved Swift Lock teeth for quick changeover and reduced downtime. Rebar cutting blades in throat.

NOTE: UP 75sv and UP 90 Cracking Jaws do not contain Swift Lock Teeth (weld in replaceable).



UP 45sv with Concrete Cracking Jaws



CONCRETE PULVERIZER JAW

UP SV SERIES (CP)

Excellent for crushing concrete and separating out rebar. Improved Swift Lock teeth allow for quick changeover and reduced downtime. High grade, abrasion resistant steel used in entire jaw. Rebar cutting blades in throat.

NOTE: CP Jaw is not available for UP 15sv.



UP 30sv with Concrete Pulverizer Jaws



SHEAR JAW

UP SV SERIES (SH)

Cuts rebar and structural steel such as I-beams, H-beams, pipe, etc. Improved pivot components for longer life and patented cutting blade system ensure better performance and reduced maintenance.

NOTE: UP 15sv Shear Jaw doesn't contain cross blade.



UP 30sv with Shear Jaws



PLATE SHEAR JAW

UP SV SERIES (PS)

Designed for cutting above and below ground storage tanks. "Ripper" on upper jaw for tearing thinner plate and initiating starter hole. Leaves plate flat versus conventional shear.

For UP 20 through 45 models only



UP 45sv with Plate Shear Jaws

STANLEY

LaBounty

GRAPPLES

CONTRACTOR GRAPPLES

HDR



HDR with QC Mount

MAXIMUM GRIPPING POWER

HDR Grapples are designed for rugged use with a two-tine, movable upper half and a three-tine stationary lower. This grapple is the original workhorse of the industry and extremely versatile, proving itself as the preferred tool in demolition (both residential and industrial), scrap handling, rock handling, waste handling and land clearing.

HDR Grapples come in 3 basic configurations:

The **HDR Standard Mount** is designed with multi-machine mounts, capable of fitting to several model excavators within the same weight class by simply changing out the mounting kit (pins, bushings & spacers).

The **HDR Custom Mount** is designed for a specific excavator linkage (not encompassed by the standard lug design) or custom bucket linkage that is out of the ordinary.

The **HDR Quick Coupler Mount** is designed to capture most manufacturer's standard pin quick couplers and function with direct pin on as well. (Grapple with or without coupler.) Profile quick couplers also available.

There are pricing variances between the various mounting options. Please contact your LaBounty representative for more information.

	Excavator Weight 3rd Member lbs/m tons	HDR Weight lbs/kg	Opening in/mm	Capacity yd ³ /m ³
HDR 30	25-35,000 / 11-16	1,700 / 770	88 / 2,240	0.75-1.25 / 0.5-0.9
HDR 40	35-46,000 / 16-21	2,950 / 1340	95 / 2,410	2-3 / 1.5-2.2
HDR 50	46-65,000 / 21-29	3,700 / 1680	113 / 2,870	2.5-3.5 / 1.9-2.6
HDR 70	65-88,000 / 29-40	5,400 / 2460	116 / 2,950	3.5-5.5 / 2.6-4.2
HDR 100	88-111,000 / 40-50	6,200 / 2820	142 / 3,610	5.5-6.5 / 4.2-4.9
HDR 170	111-180,000 / 50-82	8,700 / 3960	150 / 3,810	7-9 / 5.3-6.8
HDR 200	180-240,000 / 82-109	11,200 / 5090	150 / 3,810	7-9 / 5.3-6.8
HDR 900	Consult Factory	39,000 / 17,730		20 / 15

STANLEY

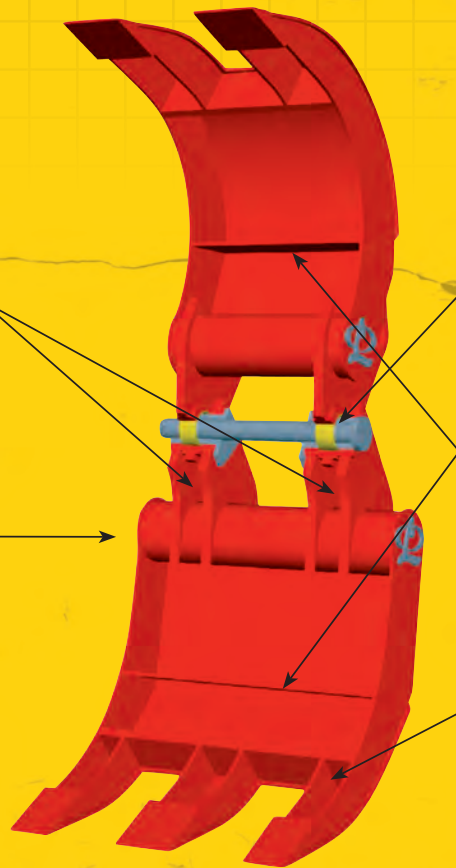
LaBounty

HDR GRAPPLE FACTS

ANATOMY OF AN HDR GRAPPLE

Thick, Bridged Mounting Lugs for strength and support.

Heavy Duty Torque Tube on each half extends across entire width.



Heavy Duty Pivot Group-The Upper Jaw has a bearing which articulates on a spool, not the pin. This significantly reduces stresses and increases pin life.

Internal Baffle / Stiffener Plates provide structural reinforcement.

Boxed Tines can withstand full breakout force of excavator on each tine.

Today's LaBounty HDR Grapples evolved from the classic, original design which launched the company over 40 years ago. HDR Grapples continue to be the standard tool used in the harshest working conditions.

LaBounty grapples offer:

- The Box-Tine design and the use of high tensile, high alloy, abrasion resistant steel creates a lightweight, maximum strength tool. Each tine withstands the full breakout force of the excavator.
- The internal and external roll plates cover the side plate welds protecting them from wear.
- The HDR pivot group features a hardened pin and heat-treated bronze bearings. HDR Grapples also utilize spool assemblies to reduce pin stress and distribute workloads to the grapple

structure. This combination reduces excessive wear, ensuring long service life.

- Heavy-duty mounting lugs greatly reduce wear on bearings from side loads during grapple operation.
- Optional wear kits are available for extremely abrasive applications. See page 19.
- Replaceable hardened tine tips for increased wear resistance and reduced downtime for hard surfacing.
- Compatibility with many quick coupling systems. (Note: Quick couplers can alter the grapple specs.)

Let the facts speak for themselves. LaBounty grapples continue to offer more for the money than any other grapple on the market today.

LaBounty attachments perform with distinction on job sites all over the world because, every day, the people of LaBounty perform with distinction at the manufacturing facility in Two Harbors, Minnesota.

Count on LaBounty attachments for solutions on your job site. Count on LaBounty people for integrity, reliability and product innovation.



Scrap Handling



Demolition



Wood Waste Handling



Rock Handling

STANLEY

LaBounty

GRAPPLES

CONTRACTOR GRAPPLES

TW/TRASH



SOLID WASTE MOVER AND DENSIFIER

TW Grapples are designed for versatility with a four-tine upper half and a five-tine lower. This grapple has proven itself as a preferred method for handling waste, refuse and large volumes of loose materials. They not only handle large volumes but also have excellent gripping force, capable of densifying waste and dexterity, allowing the operator to separate out unlike materials.

- TW Grapples pin on in place of an excavator bucket, eliminating the need for additional hydraulics.
- The box-tine design and the use of high tensile, high alloy, abrasion resistant steel creates a lightweight, maximum strength tool.
- The TW Pivot Group features a hardened pin and heat-treated bronze bearings and utilizes a spool assembly to reduce bearing friction and distribute workloads to the grapple structure, reducing pin stress and excessive wear.

"We've got four LaBounty attachments that we depend on every day. They do the work. We make our living. It's that simple..."

– JOHN SCHECK Standard Industries – Ventura County, CA



	Excavator Weight lbs/m tons	TW Weight lbs/kg	Jaw Opening in/mm	Capacity yd ³ /m ³	# of Tines Upper/ Lower	Fully Closed (Side Gap Between Jaws) in/mm	Upper Jaw Width in/mm	Lower Jaw Width in/mm
TW 30	25-35,000 / 11-16	1,700 / 770	88 / 2,240	1.0-2.0 / .75-1.5	4/5	8.5 / 220	32.5 / 830	42 / 1,070
TW 40	35-46,000 / 16-21	3,100 / 1,400	95 / 2,410	3.0-4.0 / 2.3-3.1	4/5	11 / 280	42 / 1,070	54.3 / 1,380
TW 50	46-65,000 / 21-29	3,500 / 1,590	113 / 2,870	3.5-5.5 / 2.7-4.2	4/5	11.5 / 290	42.3 / 1,070	54.5 / 1,380
TW 70	65-88,000 / 29-40	5,150 / 2,340	116 / 2,950	4.0-6.0 / 3.1-4.6	4/5	11.5 / 290	46 / 1,170	59.5 / 1,510
TW 100	88-111,000 / 40-50	7,200 / 3,270	142 / 3,610	6.0-8.0 / 4.6-6.1	4/5	15 / 380	50 / 1,270	64.5 / 1,640
TW 170	111-180,000 / 50-82	9,500 / 4,320	150 / 3,810	9.0-12 / 6.9-9.2	4/5	16 / 410	65 / 1,650	84 / 2,130

ROTATING DEMOLITION GRAPPLES

RDG



Fully Opened Position



Fully Closed Position

360° OF GRIPPING PRECISION

RDG Grapples are positive mount rotating grapples with synchronized halves, ideal for demolition and material handling applications where positive placement is required. Standard jaw configuration consists of a two-tine half bypassing into a three-tine half.

- RDG Grapple models feature 360° continuous rotation with a severe duty turntable, integrated cylinder shrouds, and mounting bracket and pins.
- RDG Grapples are manufactured from abrasion resistant, high strength alloy steel for minimal weight and maximum strength. Stick pins are hardened steel.
- Two hydraulic circuits are required, one for rotation and a second for the open and close function of the jaws.



	Excavator Weight 3rd Member lbs/m tons	RDG Weight lbs/kg	Opening in/mm	Capacity yd ³ /m ³
RDG 60	38-70,000 / 17-32	3,500 / 1,590	92 / 2,240	1.75 / 1.3
RDG 90	70-120,000 / 32-54	6,900 / 3,130	105 / 2,670	3.50 / 2.7
RDG 120	120-160,000 / 54-73	9,900 / 4,490		5.75 / 4.4

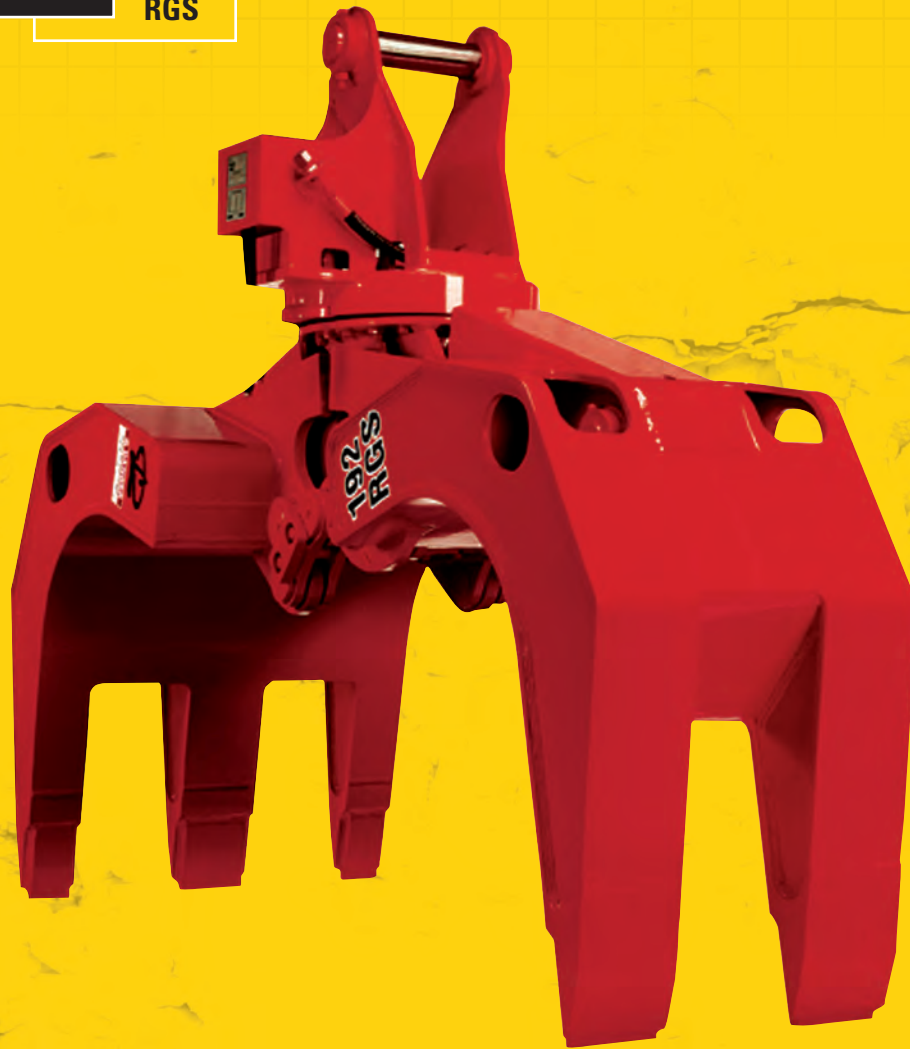
STANLEY

LaBounty

HANGING SCRAP GRAPPLE

HANGING GRAPPLES

RGS



THE ULTIMATE GRIP

RGS Grapples feature synchronized jaws designed for severe duty applications such as scrap recycling, rock and log handling. The two-tine, three-tine configuration with bypassing halves aids in aligning material into a stationary shear or shredder. This makes the RGS ideal for handling single items, bulk scrap and large, bulky items such as car bodies.

- RGS Grapple model features a 360° continuous rotation, severe duty turntable.

- Standard Equipment includes integrated cylinder shrouds and hanging yoke.
- Two hydraulic circuits are required: one for opening and closing the grapple halves and one for rotation.
- Knock-around rotation is also available.

	Excavator Weight 3rd Member lbs/m tons	RGS Weight lbs/kg	Opening in/mm	Capacity yd ³ /m ³
RGS 191	50-75,000 / 23-34	2,950 / 2,880	92 / 2,340	1.75 / 1.3
RGS 192	75-110,000 / 34-50	6,350 / 3,810	105 / 2,670	3.50 / 2.7
RGS 193	110-160,000 / 50-73	8,400 / 3,400		5.75 / 4.4



HANGING SCRAP GRAPPLE

ORANGE PEEL GRAPPLES

OPG



Fully Closed Position



Fully Opened Position

Stanley LaBounty Orange Peel Grapples are designed for maximum gripping power, capacity, ease of maintenance and durability.

Key features include:

- Reverse ported cylinders: The independently operated cylinders are built to survive in the harshest of environments and are protected with stout, quick mount shrouding.
- 360 degree continuous rotation: for precise handling, picking, and placing of material.
- Heavy duty bearing and swivel manifold for reliability.
- Dust sealed pin connections.
- Leak resistant hydraulic swivel.
- Multi machine mount yoke.
- Common cylinder for all models.
- Interchangeable main body and tines.

	Excavator Weight 3rd Member lbs/m tons	OPG Weight lbs/kg	Jaw Opening in/cm	Capacity yd ³ /m ³	Height when Closed in/cm	Operating Pressure PSI/Bar
OPG 4T 1.00	50,000/23	4,600/2,100	88"/223	1.00/1.0	100"/254	6,000/413
OPG 4T 1.25	55,000/25	4,900/2,200	95"/241	1.25/1.25	105"/267	6,000/413
OPG 4T 1.5	75,000/35	5,300/2,275	100"/254	1.5/1.15	108"/274	6,000/413
OPG 4T 2.0	100,000/45	5,700/2,450	108"/274	2.0/1.5	111"/282	6,000/413

STANLEY

LaBounty

OFFSHORE PRODUCTS

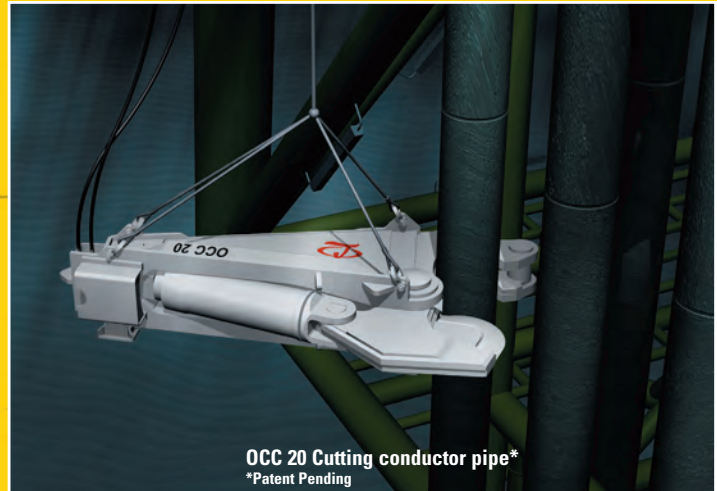
Stanley LaBounty's line of products for the offshore oil industry are designed specifically for underwater hanging applications where positioning, handling and cutting of offshore rig platforms and piping are required. These products bring unmatched speed and safety to this unique and challenging environment.

Products for this market include the patent pending OCC Offshore Conductor Cutter for processing single and multi string conductor pipe, the OSS Offshore Shear line for cutting pipe and structural steel and the OSG Offshore Grapple line for handling and carrying debris to the surface for removal.

These products are highly custom engineered to meet stringent requirements. Please call LaBounty at 800-522-5059 for specific details and specifications.



OSS 20 Awaiting deployment



OCC 20 Cutting conductor pipe*
*Patent Pending



OSG Grapple free-hanging, handling debris



OSG Grapples on spreader bar handling conductor pipe

ADAPTER & COMBINATION BRACKETS

3RD MEMBER TO 2ND MEMBER

Customers requiring the versatility to mount an attachment 3rd member on one carrier and 2nd member on another should consider the possibility of an adapter bracket or a combination bracket*. Combination brackets have both mounts built into the attachment head at time of order whereas adapter brackets pin on to an existing 3rd member mounted shear or grapple and can be ordered separately at any time. These brackets are custom designed to meet the specific requirements of both excavators and your particular application.

* U.S. Patent Number 7832130.



3rd member to 2nd member



2nd member / 3rd member
combination bracket
(patented)



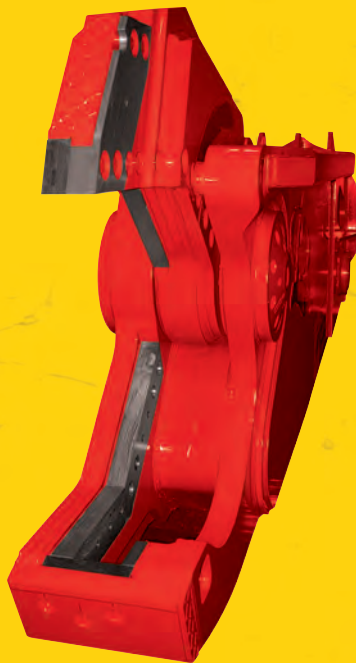
BLADE/WEAR PART KITS

LABOUNTY INDEXABLE BLADES

Of course, every LaBounty blade is engineered to precise LaBounty specifications. LaBounty cutting blades are exclusively designed for optimal use of edges resulting in the greatest possible blade efficiency and lowest possible cost per cut.

Complete blade kits (see illustration) are offered at reduced prices as compared to buying individual parts.

Please contact your authorized LaBounty representative to order your supply of parts for any LaBounty model, new or old.



HEAVY DUTY WEAR KITS

AVAILABLE FOR ALL GRAPPLES

Wear Kits are available for grapples that may work in extremely abrasive applications such as rock, concrete, or brick handling and some scrap applications. Wear Kits consist of additional plate steel welded to the front and back of both grapple halves.

STANLEY

LaBounty

ACCESSORIES

HYDRAULIC ROTATION KIT

LABOUNTY 360° ROTATION

LaBounty Hydraulic Rotation Kits provide 360° rotation for optimal attachment dexterity in any application. Using the well-proven accumulator system, the internal hydraulic rotation kit is designed into the attachment itself, specifically located in the rotation head assembly. The kit includes electrical foot control pedals and allows an attachment to be interchanged with multiple base machines without having to supply additional circuitry for rotation.

LaBounty's external hydraulic rotation kit mounts to the base machine and recharges through hydraulic fluid bleed-off. The external rotation kit option is preferable to operators comfortable with "feathering" the controls to affect rotation. Because the external rotation kit is permanently installed to a particular excavator, this option may be less appropriate in situations where attachments are used with multiple machines.

SWIFT-LOCK

REPLACEABLE TOOTH SYSTEM

Swift Lock teeth are standard equipment on most LaBounty Concrete Processing Tools. These exclusive, patented pin-on replaceable teeth allow end users to change out teeth in the field in minutes. This system significantly reduces downtime due to routine build-up and hardsurfacing.



SELECTOR VALVE

LaBounty offers a selector valve for lower flow attachments, like the MSD 7R. The valve diverts hydraulic oil by means of an electrical switch in the cab of the base machine. This option effectively actuates both the jaws and rotator using only one circuit.

The LaBounty Dealer Network — is the envy of the industry. Built on decades of cooperation, trust and mutual respect, our dealers are the most qualified, well-respected and best trained in the business. Whether considering purchase of a new attachment, re-work on an older one or discussing development of new product concept, count on LaBounty, your LaBounty representative and your LaBounty Authorized Dealer for prompt, professional, courteous attention.

RECONDITIONING

RECONDITIONED ATTACHMENT PROGRAM

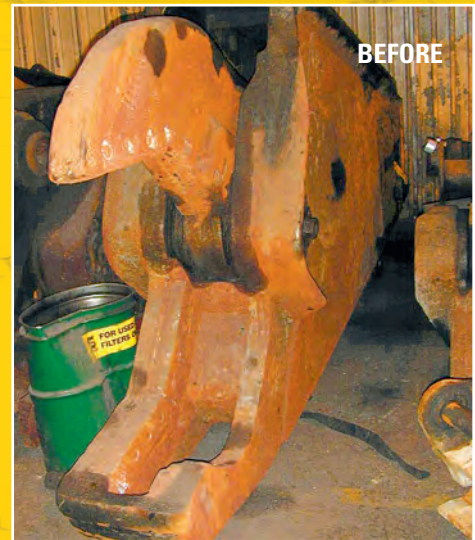
Purchasing through the LaBounty Reconditioned Attachment Program means you can shop around within LaBounty's inventory of reconditioned attachments and get exactly what you need with direct assistance from LaBounty personnel.

LaBounty's Reconditioned Attachment Manager can offer up-to-date information on ever-changing inventory; or consult the LaBounty website, featuring reconditioned inventory at: www.stanleyhydraulic.com.

LaBounty's Reconditioned Attachment Program can also provide new life for your tired attachment – complete reconditioning or major component repair – with factory-trained expertise, experience and commitment to quality.

Both LaBounty's factory certified reconditioned tools and refurbished attachments carry a 6-month, 750 hour warranty.

LaBounty Replaceable Wear Parts — are immediately available from our authorized distributor or from the LaBounty factory upon request. An often imitated model of quality throughout the industry, the LaBounty service staff is factory-trained, highly experienced and truly committed to providing solutions to your real-world challenges.



This 15 year old MSD shear, used heavily for scrap processing (above), was recently reconditioned to provide many additional years of service.



CUSTOM ATTACHMENTS

CUSTOM & SPECIALIZED PRODUCT PROGRAM



The requirements and restrictions on your projects keep changing. We understand these situations may call for specialized or new attachments. LaBounty engineers and design professionals work closely with customers to meet specific challenges through design modification, custom design or new product development.

The large, HDR 900 grapple (shown on right) is a recent example of a custom attachment solution for one of our customers.

STANLEY

LaBounty

HYDRAULIC TOOLS

EX STEALTH SERIES BREAKERS

The seven EX Breaker models feature industry leading design innovations including a patented valving system which provides unmatched performance and durability, a unique, direct-acting nitrogen chamber that results in increased impact force with the simplicity of only two moving parts and a rugged housing and powercell designed to excel in the most demanding applications. Stanley's EX Series Breakers are ideal for construction, demolition and quarry applications.



MAXFORCE /SERIES 6 BREAKERS

MaxForce and Series 6 breakers feature design elements and benefits directly prescribed by end-users around the world. Designed for breaking rock, concrete - tough materials in all types of construction with models available for all carrier classes. MaxForce and Series 6 breakers are second to none with foot-pound classes ranging from 175 up to 12,000.



CYCLONE DROP HAMMER

The Cyclone Drop Hammer is hands down, pound for pound, the most productive tool for breaking concrete flatwork. It is extremely simple to install, use and maintain. The Cyclone can be mounted to skid steers, small excavators and rubber tire backhoe loaders. Since it sits directly on top of the material using no down pressure, the energy produced by the hammer's drop is concentrated on the material itself, causing very little shock energy to go back into the machine. This significantly reduces fatigue to the machine and the operator.



MOUNTED COMPACTORS

Stanley Mounted Compactors are available to match applications requiring 2,500 to 22,000 pounds of vibratory force. The complete line includes models to fit virtually any base machine from skid steers and mini-excavators to crawler excavators. The rugged construction of Stanley Mounted Compactors features direct drive, heavy duty gear motor and patented baseplate design with outboard rubber shock mounts to ensure longer service life.



HANDHELD HYDRAULIC TOOLS

Hydraulic Handheld Tools from Stanley increase job versatility and get the job done quickly, effectively and quietly. Hydraulic power is the most efficient power of any traditional power source with the highest power-to-weight ratio of any power tool. Our handheld line of tools can be powered from a variety of hydraulic power sources such as backhoes, aerial lifts, dump trucks and Stanley Hydraulic Power Units, including our new mobile power unit – the TracHorse.



For more information on Stanley Hydraulic Tools, please call our Milwaukie, OR facility at: **800-972-2647** or visit our web site at: www.stanleyhydraulic.com



"I started working with Stanley LaBounty in 2001, first selling only parts and then after approximately 2 years, becoming a full line distributor for them. We have had great success with the LaBounty product line. Our incredible growth can be contributed to the confidence that we have with the LaBounty products. We are very pleased to be able to provide our scrap and demolition customers with such a dependable product line."

– **BRAD HUTCHINSON** Owner, Company Wrench – Carroll, OH

LaBounty is a proud member of the following associations:



Product evolution, LaBounty innovation is nothing short of legendary in the attachment industry. Virtually creating the attachment market in the early 1970's with the introduction of the contractor's grapple, LaBounty continues to lead the way with customer-driven product development and innovation.

No one has introduced more industry-impacting attachments than LaBounty.

NOTE: LaBounty attachments, parts and accessories are subject to design improvement, price and specification change without notice and with no obligation. Excavator weight recommendations are based off of OEM dimensions and lift capacities. Actual compatibility will vary, depending upon various options offered.

Weights, dimensions and operating specifications are subject to change without notice.

Where specifications are critical to your application, consult your LaBounty representative.

STANLEY

LaBounty